

KIER

2024-2025 Overview of Institute of Economic Research Kyoto University



KYOTO UNIVERSITY

CONTENTS

Foreword	01
Organization and Research Staff	02
Actual Staff	03
List of Directors	03
List of Professors Emeriti	03
Research Divisions and Centers	
Economic Information Analysis Division	04
Economic Institution Division	04
Strategic Economic Studies Division	05
Finance Research Division	05
Research Center for Economics of Complex Systems	05
Research Center for Advanced Policy Studies	06
Contemporary Economic Analysis Division (Visiting Researchers)	06
Joint Usage / Research center	
“International Joint Research Center of Advanced Economic Theory”	07
Kyoto University Research Coordination Alliance	08
Social Science Unit for Research and Education	08
Social Contribution	08
Track Records	18
Library	21
On-site Facility for Remote Access to Official Statistical Data	22
Finances	23
Chronological Table	24
Map & Access	25

Kyoto Institute of Economic Research (KIER), since its establishment in 1962, has become a premier economics research institution in Japan. Starting with significant research in major fields of economics such as econometrics, economic theory, and comparative economics, we have also published research with international impact in spatial economics and nonlinear dynamics/complexity economics, as well as game theory. In addition, recent research themes of our faculty include topics directly related to understanding the real economy and resolving issues thereof, such as analysis of household behavior and intermediation theory.

To date, KIER has disseminated leading research papers in economics, because each of its faculty is a pioneer at the front lines of various research fields and advances those fields. For instance, in terms of the per-faculty numbers of the research papers published in international journals and their citations in various scholarly publications, KIER maintains a top position among the economics institutions in Japan. In addition, each faculty member has a close, international network of collaborators, which forms a basis for KIER to build a strong collaborative research environment. The entire research community recognizes a mere visit to the KIER building as an access to collaboration with its faculty, which leads to the current situation where KIER welcomes many visitors from Japan and abroad, holding many seminars open to all researchers.

KIER has managed to keep its position in pursuit of high productivity and world-wide trust from its establishment until today. In addition to promotion of joint research, we encourage our faculty to disseminate their research in the form of discussion papers, while evaluating them only by publication records in peer-reviewed journals. For internationalization, we encourage faculty's long-term research trips overseas and welcome foreign visitors. KIER also has secretary service to assist researchers. As we have created and developed our own research-oriented culture, KIER has become a research institute highly recognized not only in Japan but also internationally.

In order to contribute to diverse stakeholders, KIER is evolving in three major directions in recent years. The first is to strengthen its function as a platform of joint research and joint usage. Since 2010, KIER has been approved by the Japanese Ministry of Education, Culture, Sports, Science and Technology (MEXT) as a Joint Usage/Research Center, under the name "International Joint Research Center of Advanced Economic Theory". Building on the strong international co-author network of the faculty, the center's function not only supports international joint research and international networking, but also provides researchers in Japan with opportunities to participate in the international collaboration schemes. It thus plays an indispensable role in improving Japan's research capabilities.

The second direction is an approach that emphasizes the interface between real economy and research, which led KIER to develop applied scientific studies together with theory. The Research Center for Advanced Policy Studies (CAPS), established in 2005, functions as a place where the research results of KIER can be used in policy formulation through interactive research exchanges with researchers dispatched by government agencies. KIER now enjoys the two-pronged system that contributes to the research community through the Joint Usage/Research Center and contributes to solving social issues through the implementation of policies made in CAPS.

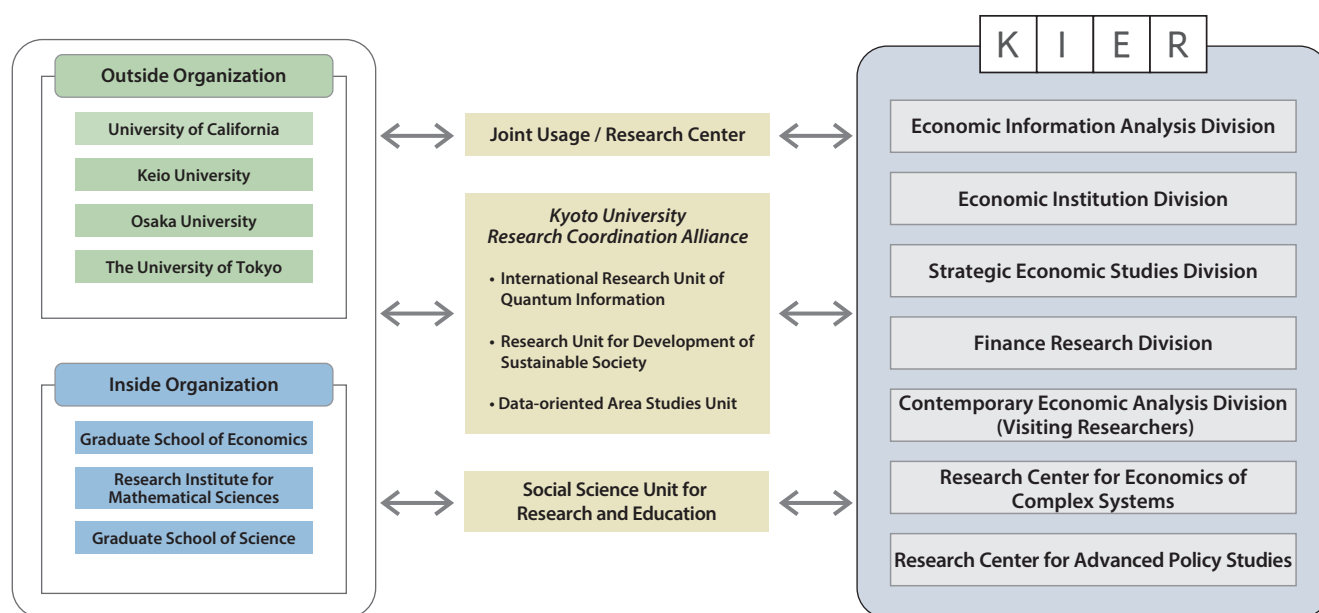
The third direction is to develop next generation researchers. Our faculty teach core courses of the Graduate School of Economics and advise many graduate students there. KIER also accepts young researchers in various categories spontaneously, including research fellows from the Japan Society for the Promotion of Science and foreign visitors. Moreover, in recruiting, KIER was one of the first to introduce the tenure-track system, at Kyoto University and among the domestic institutions on social sciences. KIER maintains an open-door policy towards employment and education of young talented researchers. We also hire a researcher on a cross-appointment basis with a foreign university, thereby increasing the number of foreign faculty steadily and attaining a unique, international faculty composition.

The global crises brought about by the pandemic and international conflicts, and the resulting uncertain economic situation, along with environmental and inequality issues, are calling into question the social significance and role of economics. World-class research is expected from Japan. We are confident that the spirit and institutionalized research and education style that our institute has cultivated, as well as the new directions of evolution, will solve the current issues that economics must address. We ask for your guidance and cooperation in the development of KIER.



Tadashi Sekiguchi, Director
Kyoto Institute of Economic Research

Organization and Research Staff



Cooperation

	Research Divisions	Research Areas	Research Staffs	
Director	Economic Information Analysis Division	Macroeconometric Analysis Microeconometric Analysis Econometrics Experimental Economics	Professor Professor Assistant Professor Professor Senior Lecturer	Hiroshi TERUYAMA Takashi UNAYAMA Hyunjae KANG Yoshihiko NISHIYAMA Junfan TAO
	Economic Institution Division	Economic Analysis of Institutions Economic Analysis of Organizations International Trade and Economic Growth		
	Strategic Economic Studies Division	Game Theory Environment and Public Policy Strategic Market Theory	Professor Professor Associate Professor	Tadashi SEKIGUCHI Jonathan NEWTON Chia-hui CHEN
	Finance Research Division	Mathematical Finance Risk Management Market Quality Financial Econometric Analysis Intermediation Economics Finance International Financial Economics (Visiting Researchers)	Professor Associate Professor Associate Professor Professor Professor Professor Professor Professor	Akihisa SHIBATA Shin KANAYA Hidenori Takahashi Makoto WATANABE Chiaki HARA Marcus BERLIANT Thorsten HENS Shurojit CHATTERJI
	Contemporary Economic Analysis Division (Visiting Researchers)		Professor	Kumiko HABA
	Research Center for Economics of Complex Systems	Spatial Economics Nonlinear Economic Dynamics Quantitative Macroeconomics	Professor Assistant Professor Professor Associate Professor	Tomoya MORI Minoru OSAWA Tadashi SHIGOKA Shuhei TAKAHASHI

	Research Divisions	Research Areas	Research Staffs	
Director	Research Center for Advanced Policy Studies		Associate Professor	Kohei FUKAWA
			Associate Professor	Hidetoshi TOGAWA
			Associate Professor	Masashi HIROKI
			Associate Professor	Naoki TANI
			Associate Professor	Yusuke INOUE
			Associate Professor	Yasunori YAMASHITA
			Assistant Professor	Bolin MAO
	Program-Specific Researchers		Program-Specific Professor	Fumio OHTAKE
	Project Researchers		Project Professor	Masahisa FUJITA
			Project Professor	Kazuo NISHIMURA
			Project Professor	Kazuo MINO
			Project Professor	Makoto YANO
			Project Professor	Satoshi MIZOBATA
	Administration Office		Head	MABUCHI, Mitsumasa

(as of April 2024)

Actual Staff

Classification	Professor	Associate Professor	Lecturer	Assistant Professor	Sub-total	Administrative Staff	Total
Research Divisions	11	10	1	3	25	4	29
Visiting researchers	1	—	—	—	1	—	1
Foreign visiting researchers	3	—	—	—	3	—	3
Other Grant-in-Aid, etc.	5	—	—	—	5	—	5
Total	20	10	1	3	34	4	38

(as of April 2024)

List of Directors

Directors	Term
Seijiro KISHIMOTO	1962. 4. 1 ~ 1966. 3. 31
Hideo AOYAMA	1966. 4. 1 ~ 1971. 11. 30
Masao BABA	1971. 12. 1 ~ 1974. 3. 31
Chikashi MORIGUCHI	1974. 4. 1 ~ 1974. 7. 15
Hisao ONOE	1974. 7. 16 ~ 1978. 7. 15
Kenzo YUKIZAWA	1978. 7. 16 ~ 1980. 2. 8
Yoshikazu MIYAZAKI	1980. 2. 8 ~ 1980. 3. 31
Yoshikazu MIYAZAKI	1980. 4. 1 ~ 1983. 4. 1
Hisao ONOE	1983. 4. 2 ~ 1986. 3. 31
Masao BABA	1986. 4. 1 ~ 1986. 10. 27
Kazuo KOIKE	1986. 10. 27 ~ 1986. 12. 31
Kazuo KOIKE	1987. 1. 1 ~ 1988. 3. 31
Syoshichi SUGIMOTO	1988. 4. 1 ~ 1990. 3. 31
Takamitsu SAWA	1990. 4. 1 ~ 1994. 3. 31
Takao FUKUCHI	1994. 4. 1 ~ 1995. 3. 31
Takamitsu SAWA	1995. 4. 1 ~ 1999. 3. 31
Masahisa FUJITA	1999. 4. 1 ~ 2001. 3. 31
Takamitsu SAWA	2001. 4. 1 ~ 2006. 3. 31
Kazuo NISHIMURA	2006. 4. 1 ~ 2010. 3. 31
Makoto YANO	2010. 4. 1 ~ 2012. 3. 31
Satoshi MIZOBATA	2012. 4. 1 ~ 2016. 3. 31
Akira OKADA,	2016. 4. 1 ~ 2016. 12. 31
Satoshi MIZOBATA	2017. 1. 1 ~ 2020. 3. 31
Yoshihiko NISHIYAMA	2020. 4. 1 ~ 2024. 3. 31
Tadashi SEKIGUCHI	2024. 4. 1

List of Professors Emeriti

Professor Emeriti	Date of the title conferred
Seijiro KISHIMOTO	1966. 4. 2
Hideo AOYAMA	1973. 4. 2
Hisao ONOE	1986. 4. 1
Yoshikazu MIYAZAKI	1990. 1. 23
Fumiko SEO	1993. 4. 1
Syoshichi SUGIMOTO	1996. 4. 1
Chikashi MORIGUCHI	1997. 3. 4
Takao FUKUCHI	1997. 3. 4
Masahiko AOKI	2001. 3. 6
Takamitsu SAWA	2006. 4. 1
Kazuyoshi UEHARA	2007. 4. 1
Akio SAKAI	2007. 4. 1
Masahisa FUJITA	2007. 4. 1
Tsuneo TSUKATANI	2008. 4. 1
Kazuo NISHIMURA	2010. 4. 1
Ryuhei WAKASUGI	2012. 4. 1
Haruo IMAI	2015. 4. 1
Kazuo MINO	2015. 4. 1
Kenn ARIGA	2016. 4. 1
Makoto YANO	2018. 4. 1
Atsushi KAJII	2020. 2. 18
Hiroshi OSANO	2020. 4. 1
Satoshi MIZOBATA	2021. 4. 1

Economic Information Analysis Division

This division comprehensively views econometric theory, applied econometrics, and empirical economics as “economic information analysis,” and aims to contribute to the research field. It has two objectives:

First, it aims to contribute to the development of micro-econometrics by fusing econometric theory with applied microeconomics, such as labor, household, and corporate economics. Empirical economics that elucidates the behavioral principles of economic agents and the laws of economic motion through statistical analysis of quantitative data on economic activities has exhibited new developments in recent years.

As computer technology has enabled efficient statistical calculations of big data, micro-econometrics, which analyzes microeconomic data related to households and firms based on the behavioral principles of economic agents, has been developed. In econometrics, remarkable progress has been observed in the analysis methods for panel data, which comprise time-series and cross-sectional information, and qualitative data, which have no quantitative information. Furthermore, efforts to create panel data-sets using questionnaire surveys, among others, are even more important. This division aims to contribute to the development of empirical analysis by establishing a research system that ensures the information security of business data accumulated in private and government operations.

Second, it contributes to the analysis of macroeconomic data by using time-series analysis and computer-based numerical simulation techniques. This division contributes to the further development of macroeconomic analysis by promoting linkages between macroeconomic theory, time-series analysis techniques, and computational economics. They form the core of empirical analysis of modern macroeconomics.

Economic Institution Division

In this division, we study the emergence and evolution of social and economic organizations, institutions, and conventions. We are particularly interested in social and economic institutions, corporate organizations, and social decision-making processes. We pursue our research agenda under two themes.

Under “economic analysis of institutions”, we compare economic institutions based on the empirical and theoretical analysis of the market system and various other institutions. We also attempt to assess the emergence and evolution of such systems by incorporating techniques and insights developed in sociology.

Under “economic analysis of organizations”, we study the inner structure of organizations and the relationship between them. We apply game theory to deal not only with corporate organizations but also with legislative bodies and other types of organizations. We empirically assess our findings and compare them with findings in law, management, biology, and other related fields.



Strategic Economic Studies Division

This division bases its research on the study of the strategic behavior of economic agents, which plays an important role in advanced economic theory. The division aims to promote and disseminate state-of-the-art theoretical research and its various applications. Established in 2009, the division inherited the research program of the former Public Policy Division and thus also carries out research that connects theoretical analysis to policy proposals. In order to conduct strategic analysis of the economy from the perspectives of theory, application and policy implications, the current members of the division specialize in the area “game theory” and study individual and group-level decision-making under settings with dynamics, imperfect information, and so on.

Through the cutting-edge study of dynamics, imperfect information, and incomplete information, the area “game theory” advances game theoretic methodology that is at the core of economic analysis. Topics of research include the theory of cooperation under long-run relationships with general information structures; the analysis of individual and collective decision-making under learning and evolution; signaling and screening under dynamic environments; and applications of these results to the behaviors of firms and organizations.

Finance Research Division

In today's ever complex global economy, investors and corporate executives need to recognize uncertainties within companies and across markets. Theory of finance and financial engineering are both intended to help them assess such uncertainties for optimal risk management. Given the paramount importance of these fields, in April 2000, the institute established the Research Center for Financial Engineering, which served as an international hub for research and education in these fields for ten years. To consolidate its status, in April 2010, the center was reorganized as the “Finance Research Division.”

In this division, we cover a wide range of topics such as the optima risk management, the role of organizations, conventions, and ethics in financial markets, and the role of financial intermediaries and commercial platforms. We study causes of financial crises and precautionary measures to prevent them. The specific areas of research in this division are “Risk Management,” “Intermediation Theory,” and “Financial Econometrics Analysis,” with special emphasis on risk management in organizations. In collaborations with other divisions in the institute, we also endeavor to prescribe policy measures for risk management in the Japanese economy as well as for its recovery after the lost decades.

Research Center for Economics of Complex Systems

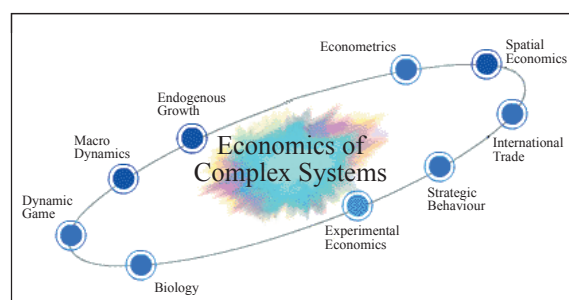
The application of the science of complex systems to economics advanced greatly in the 1990s. Within this discipline, our institute has achieved great success in the fields of nonlinear economic dynamics and spatial economics. Between 1997 and 2003, we received Grants-in-Aid for Scientific Research in relation to the formation of a center for the economics of complex systems. During this period, through interdisciplinary and international conferences as well as international joint researches, our institute played the role of an international center of this field. The purpose of the establishment of this center is to ensure a permanent research base for the economics of complex systems.

The Research Center for Economics of Complex Systems started by focusing on two research areas, “spatial economics” and “economic dynamics”, and included later “quantitative macroeconomics” as its new research area to reflect the recent development of economics. The objective of the “economics of complex systems” is to elucidate, in a unified way, strategic interdependent relationships, spatiotemporal pattern formations, and macroeconomic fluctuation phenomena.

“Spatial economics” develops theories and conduct empirical analyses on the mechanism of economic agglomerations such as industrial clustering, city formation and transport network formation, whose spatial patterns often provide typical examples of self-organizations leading to the emergence of orders.

“Nonlinear economic dynamics” treats as research objects a large class of dynamic general equilibrium models such as multisector growth models by appealing to the bifurcation theory of dynamical systems and the theory of stochastic processes, and analyzes the conditions under which phenomena such as nonlinear oscillations of equilibrium, indeterminacy of equilibrium, and sunspot equilibrium arise from these models.

“Quantitative macroeconomics” studies economic growth, business cycle fluctuations, fiscal and monetary policy, and related issues by using dynamic general equilibrium models parameterized based on micro-level and macro-level data.



Research Center for Advanced Policy Studies

The Research Center for Advanced Policy Studies (abbreviated to CAPS) is an organization whose purpose is to carry out analytical research to propose concrete images of policies and to disseminate the results to society, utilizing the abundant research resources of Kyoto University and collaborating with policy-related institutions based on leading theory and empirical analysis of economics.

CAPS, established in July 2005 as part of KIER, has been working on political science, especially evidence-based policy research by making full use of the knowledge and research network of advanced theories and empirical research of KIER. This center has become an interactive educational institution where faculty members themselves study and engage in policy research, for their Ph.D. degree, while at the same time educating in undergraduate and graduate schools. From 2017, the center organized steering committee by cooperating with Kyoto University as a whole.

After the first, second and third period, each of five or six years, CAPS is currently in the mid-term of the fourth period (FY2022-2026). This center CAPS comprises of seven professors with fixed term appointment, hereinafter referred to as non-tenured professors, and two tenured professors (the center director and vice-director; KIER position held concurrently) responsible for the operation of the center. Non-tenured professors are dispatched from government departments (Ministry of Finance, Ministry of Economy, Trade and Industry, Ministry of the Environment and Ministry of Land, Infrastructure, Transport and Tourism, Ministry of Education, Culture, Sports, Science and Technology).

By investigating the efficacy of the techniques and theory pertaining to advanced economic analysis, which is KIER's main research area, and quickly and precisely linking the results of advanced economic research to policy analysis, the center reflects the fruits of its research in actual economic policies. Its objective is to promote interaction that overcomes the barriers between governmental, private and academic institutions, as well as between government departments, to realize a reciprocal flow of human resources between the policy-related institutions and the academic world, and to foster both theoretical and empirical policy research.

These studies play a pioneering basis of policy-making based on statistical evidences, and their results have been reported not only in numerous books and papers, but also at academic conferences. They have been disseminated to the world and highly evaluated. Some of the faculty members, who produced outstanding research results, have been awarded doctoral degrees. They move back to government offices and have been working in the field of policy practice. The human resource development of CAPS indicates the uniqueness of the research activity of this center. In addition, the center faculty members provides lectures to the graduate school students who are interested in policy at Kyoto University, about policy implementation and practice based on their own experiences at government offices.

In its third period (2017-2022), CAPS has actively promoted evidence-based policy making project "Interdisciplinary Research of Human and Social Sciences for Establishing Evidence-based Society and Education of Highly Advanced Researchers: From Needs to Seeds" and has collaborated with Center for Genomic Medicine, Kyoto University Graduate School of Medicine, for establishing the comprehensive human sciences panel data through "Nagahama Project".

From the 4th period, the Center has been working to improve its organization in a manner that is in line with the objectives of the Science, Technology, and Innovation Basic Plan, which was newly established in 2021, while continuing existing initiatives. The center is oriented toward EBPM research with a specific focus on solving various social issues in the real world, and is enhancing "Science Policy Interface" by social implementation of policy in the local governments and others. For this purpose, we aim to promote more profound research by strengthening cooperation with CAPS alumni who have returned to their home ministries and with research institutions in government agencies. In addition, as in the past, we are also working to develop high-level human resources for the construction of evidence-based human science through the operation of the Integrated Social Science Research and Education Unit, in which all social and human sciences departments participate.

Contemporary Economic Analysis Division (Visiting Researchers)

This division was established to welcome outstanding researchers from outside the university as visiting professors/associate professors, and thereby conduct joint research. While its primary research interests are in the current problems of the Japanese economy, the division also studies other related topics.

Joint Usage / Research Center “International Joint Research Center of Advanced Economic Theory”

As an international hub of economic theory, KIER has been promoting domestic and international research collaboration. In FY2010, MEXT recognized it as the International Joint Research Center of Advanced Economic Theory, with its medium-term purpose of promoting research in two fields of advanced economic theory: economics of complex systems and economic strategy and organization. After careful deliberations of high-level expert committees on its achievements, MEXT decided to extend its recognition in FY2016, and, again, in FY2022.

KIER is well endowed with tangible and intangible assets on which the Center can pursue its mission, such as promoting international collaborations and training young researchers. The management of the Center is delegated to its Advisory Committee, which comprises five members who are also members of KIER and five others, who represent the academic community.

Of various activities conducted by the Center, the Project Research scheme is at the core of its mission. The scheme accepts, once a year, research proposals from groups of researchers, each led by a researcher who is not a member of KIER, and allow the members of the successful proposals to use the resources of KIER to advance their research. It aims at producing innovative research, and, indeed, a host of contributions up to the international standard has been produced.

The Selection Committee of the Research Project scheme, which comprises five members who are also members of KIER and five others, make a recommendation on successful applications to the Advisory Committee, which makes a final decision of acceptance based on the recommendation. For FY2024, the following eighteen proposals were accepted, two of which are under the heading of the year's main theme, “Economic analysis on the resilience of the global social system”.

Titles of the accepted research proposals for FY2024

<i>Under the Main Research Theme</i>	<i>Researcher Names and Affiliations</i>
Modelling Sustainable Finance	Thorsten HENS : Department of Banking and Finance, University of Zurich
Continuing frictions in the global economy and the resilience of state-permeated economic systems	Mihoko SATOGAMI : Faculty of Business Administration, Soka University
<i>In General Research Themes</i>	<i>Researcher Names and Affiliations</i>
Basic research on the firm management and support measures that take into account social factors	Kenji KONO : Faculty of Economics, Oita University
global FX ambiguity and currency portfolios	Takao ASANO : Faculty of Economics, Okayama University
Policy Uncertainty and the International Economy	Takao ASANO : Faculty of Economics, Okayama University
Issues in Dynamic Macroeconomics	Ryoji OHDOI : School of Economics, Kwansei Gakuin University
Frontiers of Macroeconomics	Takayuki TSURUGA : Institute of Social and Economic Research, Osaka University
A Macroeconomic Analysis of the Impact of Home Appliance Adoption on the Labor	Yuta TAKAHASHI : Institute of Economic Research, Hitotsubashi University
A structural-model analysis of the Japanese regional economy	Yuki TAKAYAMA : School of Environment and Society, Tokyo Institute of Technology
Japan's future through the lens of cities: Japan's regional economies under declining population predicted by economic agglomeration theory	Daisuke MURAKAMI : The Institute of Statistical Mathematics
A decision theoretic analysis on the role of information	Youichiro HIGASHI : Faculty of Economics, Okayama University
Contracts, Information, Learning and Applications in Economic Theory	Saori CHIBA : Faculty of Economics, Kyoto Sangyo University
The role of health literacy in enabling better decision-making	Masako II : School of International and Public Policy, Hitotsubashi University
Experimental approach to bidding behavior	Daijiro KAWANAKA : Faculty of Commerce, School of Commerce, Waseda University
Socio-Life Scientific Study for New Infectious Disease Control Measures	Shigeru HIROTA : Faculty of Economics, Kyoto Sangyo University
Research on Economic Policies for Sustainable Economic Growth through Private Investment and Fair Income Distribution	Real ARAI : Faculty of Economics, Ryukoku University
Bounded Rationality of Audience and Strategic Information Transmission	Hitoshi SADAKANE : Graduate School of Business Administration, Kobe University
Microeconomic Analysis of Markets for Data Transactions	Naoki WATANABE : Graduate School of Business Administration, Keio University

The Center, in cooperation with researchers participating in the Project Research scheme, hosts a number of international workshops, conferences, and symposiums. It also supports organizers of such academic events held even outside Kyoto. Since FY2016, the Center has organized several workshops and conferences jointly with the Institute of Social and Economic Research of Osaka University and the Institute of Economic Research at Hitotsubashi University, thereby consolidating the cooperative relationship with the other International Joint Usage / Research Centers in economics. The Support Office of the Center, located in KIER, is in charge of the administrative work and information release on its research activities.

Kyoto University Research Coordination Alliance

Kyoto University Research Coordination Alliance is mainly composed of Institutes and Centers of Kyoto University. It strengthens the coordination through publication of information including study results, joint operation and procurement of large-scale equipment, appropriate and unified management of internal sources and their focused distribution to common issues. It also deals with the reinforcement and globalization of the research power of the University, including the graduate schools and faculties, by supporting the efforts for creation of new areas through fusion of different areas of study.

Research Units for Exploring Future Horizons represent one of important activities of the Research Coordination Alliance, and function to try bottom-up creation of new academic areas based on varied academic areas of Institutes and Centers. Four research units are established. KIER participate in three units (International Research Unit of Quantum Information, Research Unit for Development of Sustainable Society, and Data-oriented Area Studies Unit).

Social Science Unit for Research and Education

For the development of social science in Japan, there is a strong need for the fusion of knowledge across disciplines. To this end, it is essential not only to develop theoretical research, but also to ensure that the level of empirical research is in a position to attract worldwide attention. Furthermore, it is necessary to foster human resources with social scientific backgrounds who can make extensive use of data and build theory and evidence-based research based on this knowledge.

This unit intends to help promote an evidence-based society in collaboration with Graduate School of Medicine, Graduate School of Informatics and other natural science departments as well as humanities and social science graduate schools and research institutions in our university. It aims to establish new humanities and social sciences based on quantitative data, cultivate talents in most advanced areas of study, and create evidence-based interdisciplinary human sciences that elucidate human nature and society. This initiative is in line with the direction stated in the Basic Act on Science, Technology and Innovation, which was established in 2021, and provides a forum for exploring the creation of new knowledge.

Placing the policy studies by the Research Center for Advanced Policy Studies (CAPS) instructors at its core, we collaborate with departments that comprise the unit and with data-building hubs on and off campus in creating panel data and big data that capture personal traits and social structures in fields ranging from social science to life science. Specifically, the unit has collaborated with Center for Genomic Medicine, Kyoto University Graduate School of Medicine, for establishing the comprehensive human sciences panel data. Utilizing the data, our project pursues research on determinants of social phenomena, human activities, and health from innovative perspectives not found in existing research.

The unit will connect faculty members interested in evidence-based human science from the unit's constituent departments to jointly explore data-driven research that integrates different disciplines and contribute to the creation of "Science Policy Interface". In addition, graduate students and others are nominated by the constituent departments to work with CAPS faculty as young collaborators (including research assistants, teaching assistants, etc.) in research and education to deepen their understanding of evidence-based human sciences and to encourage them to reflect this understanding in their own research in their respective fields of specialization.

Social Contribution

Symposiums and Seminars

Lectures and symposiums for adults and students are held periodically, and themes centering on the introduction of economic frontiers and explanations of economic problems that are of great social concern are raised. The economic research symposiums that are hosted every year have recently raised such themes as the "Information Society and Economics", "Management of the Creation of Evolving Values", and "Simplified Advanced Policy Analysis".

Further, economic education activities are also pursued via the economic teaching symposium "Specially-Founded Academy for Referencing Advanced Finance and Economics", and invitations to junior high and high school students to attend public lectures as the audience.

Number of Previous Workshops and Symposiums

Fiscal Year	2019	2020	2021	2022	2023
Number of Previous Workshops	14(4)	6(1)	10(3)	7(3)	24(10)

Note: Figures in parentheses show the number of international symposiums within the total number.

Number of Previous Workshops

FY	2019	2020	2021	2022	2023
Microeconomics and Game Theory Workshop	30	21	29	34	37
Econometrics Workshop	4	2	4	3	7
KIER Workshop	—	1	0	0	0
Contract Theory Workshop	1	0	0	0	0
Urban Economics Workshop	10	4	12	9	10
CAPS Workshop	10	6	10	6	3
Macroeconomics and Economic Systems Workshop	32	5	0	43	16
Joint Usage / Research Center Workshop	5	1	8	8	7
Others	3	3	1	1	0
Total Number	95	43	64	104	80

Social Contribution

Main Symposiums Hosted or Jointly Hosted by KIER (8 April 2013 to 27 March 2024)

Date	Title	Guest Speakers	Venue
2013 4/8~9	International Conference on Market Quality, Trade and Dynamics	Ronald Jones (University of Rochester, USA) Naoyuki Yoshino (Keio University) Nicholas Yannelis (University of Iowa and University of Manchester, UK) Takashi Kamihigashi (Kobe University) Andy Neumeyer (Universidad Torcuato di Tella, Argentine) Yuichi Furukawa (Chukyo University) Krishnendu Dastidar (Jawaharlal Nehru University, India) Hitoshi Matsushima (The University of Tokyo) Takakazu Honryo (University of Mannheim, Germany) Peter Rosendorff (New York University, USA) Mukul Majumdar (Cornell University, USA)	The Westin Miyako Kyoto
2013/4/28	Science Education in Kyoto -The Grobal Partnership on Science Education Through Engagement in Kyoto-	Yoshiharu Hoshino (Teikyo University) Yasuo Sando (Nippon Steel & Sumikin Research Institute Corporation) Hiroshi Asada (Kyoto Municipal Katsuragawa Elementary School) Yuji Takahata (Nerima Munisipal Kaishin The First Junior High School) Isao Iizawa (Kyoto Municipal Horikawa Senior High School) Toshiharu Tsushima (Fukushima Prefectural Adachi High School) Osamu Marukawa (Kyoto Prefectural Board of Education) Hidefumi Tooyama (Kyoto Prefectural Board of Education) Kazuo Nishimura (Kyoto University)	Panasonic Auditorium, Yukawa Memorial Hall, Kyoto University
2013 11/8~9	International Conference on Market Quality and Economic Institutions	Makoto Yano (Kyoto University) Takashi Komatsubara (Kyoto University) Shin Sakaue (Sophia University) Hidetaka Kawano (Aomori Public University) Jinwoo Kim (Seoul National University, Korea) Jun Tomitaka (Aomori Public University) Krishnendu Dastidar (Jawaharlal Nehru University, India)	WA-RASSE (8th) Aomori Public University (9th)
2013/11/9	Joint-Usage, Joint-Research Program Workshop on Social Infrastructure Design in Post-Earthquake	Takayuki Oishi (Aomori Public University) Shino Takayama (The University of Queensland, Australia) Andy Mclennan (The University of Queensland, Australia) Youngsub Chun (Seoul National University, Korea) Yoshinori Kon (Aomori Public Univeristy)	Aomori Public University
2013/12/3	Institutions, Markets, and Market Quality -IEFS Japan Annual Meeting 2013-	Makoto Yano (Kyoto University) Shuhei Takahashi (Kyoto University) Taiji Furusawa (Hitotsubashi Univeristy) Takashi Kamihigashi (Kobe University) Kenji Fujiwara (Kwansei Gakuin University) Hu Yunfang (Tohoku University) Krishnendu Dastidar (Jawaharlal Nehru University, India) Toshihiro Matsumura (The University of Tokyo)	Rokkodai Main Building, Kobe University
2013 12/14~15	International Conference "International Comparison on Variety of Capitalism and Work Motivation"	Hironori Tohyama (Shizuoka University) Hitomi Matsubara (Osaka City University) Mihoko Satogami (Kyoto University) Satoshi Mizobata (Kyoto University) Ryoji Ihara (Gifu University) Shoji Hashiguchi (Ritsumeikan University) Katsumi Fujiwara (Osaka University) Hiroaki Hayashi (University of Shimane) Simon Clarke (University of Warwick, UK) Geoffrey Wood (University of Warwick, UK) Pavol Babos (Slovak Academy of Sciences, Slovakia) Ngoc Anh Nguyen (National Economic University, Vietnam) Richard Deeg (Temple University, USA)	Kyoto University Clock Tower Centenniale Holl

Social Contribution

Date	Title	Guest Speakers	Venue
2014/2/18	SSK International Workshop in Kyoto	Kyungchul Song (University of British Columbia, Canada) Ryo Okui (Kyoto University) Naoya Sueishi (Kyoto University) Sokbae Lee (Seoul National University, Korea) Se-il Mun (Kyoto University)	The Westin Miyako Kyoto
2014/2/27	AEI-Five Joint Workshop on Economic Issues in the Asian Century	Keun Lee (Seoul National University, Korea) Yoshihiko Nishiyama (Kyoto University) Jianguo Xu (Peking University, China) Jae-Young Kim (Seoul National University, Korea) Pei-Ju Liao (Academia Sinica, Taiwan) Tianyang Xi (Peking University, China) Xiaobo Zhang (Peking University, China) Eric Fesselmeier (National University of Singapore, Singapore) Kamhon Kan (Academia Sinica, Taiwan)	The Westin Miyako Kyoto
2014/2/28	Workshop on Growth and Economic Policies	Kazuo Mino (Kyoto University) Been-Lon Chen (Academia Sinica, Taiwan) Jui-Jen Chang (Academia Sinica, Taiwan) Miaojie Yu (Peking University, China) Oyvind Thomassen (Seoul National University, Korea) Min Wang (Peking University, China) Tadashi Sekiguchi (Kyoto University) Zhu Shenghao (National University of Singapore, Singapore) Youngsub Chun (Seoul National University, Korea)	The Westin Miyako Kyoto
2014 3/5~6	International Seminar “Variety of Capitalism in Transition Countries and Work Motivation”	Kazuho Yokogawa (Kanagawa University) Makoto Kumazawa (Konan University) Jan Hagamejer (Warsaw University, Poland) Joanna Tyrowicz (Warsaw University, Poland) John Round (National Research University-Higher School of Economics, Russia)	Shiran Kaikan Annex, Kyoto University
2014 3/28~29	International Conference on Portfolio Selection and Asset Pricing	Giorgia Callegaro (University of Padova, Italy) Darrell Duffie (Stanford University, USA) Masahiko Egami (Kyoto University) Toshiki Honda (Hitotsubashi University) Yuri Kabanov (University of Franche-Comte, France) Shigeo Kusuoka (The University of Tokyo) Hiroshi Morita (Yokohama National University) Rohit Rahi (London School of Economics, UK) Jun Sekine (Osaka University) Jaeyoung Sung (Ajou University, Korea) Xun Yu Zhou (University of Oxford, UK)	Kyoto University Clock Tower Centenniale Hall
2014/7/19	International Conference on “Comparative Analysis of Business and Management”	Yoji Koyama (Niigata University) Norio Horie (University of Toyama) David Stark (Columbia University, USA) Takabumi Hayashi (Kokushikan University) Naoki Wakabayashi (Kyoto University) Fazakas Balazs (Kyoto University) Satoshi Mizobata (Kyoto University)	Kyoto University Clock Tower Centenniale Hall
2014/9/24	Second Conference on Institutions, Markets, and Market Quality –IEFS Japan Annual Meeting 2014–	Yan Ma (Kobe University) Takashi Komatsubara (Kyoto University) Nobuyoshi Yamori (Kobe University) Taiji Furusawa (Hitotsubashi University) Naoto Jinji (Kyoto University) Yoichi Sugita (Institute of Developing Economies, Japan External Trade Organization / IDE-JETRO) Yoshinori Kurokawa (University of Tsukuba) Akihiko Yanase (Nagoya University)	Rokkodai Main Building, Kobe University

Date	Title	Guest Speakers	Venue
2015 5/21~22	Third Conference on Institutions, Markets, and Market Quality –IEFS Japan Annual Meeting 2015–	Makoto Yano (Kyoto University) Shuhei Takahashi (Kyoto University) Mario Crucini (Vanderbilt University, USA) Takayuki Tsuruga (Kyoto University) Akihiko Yanase (Nagoya University) Misuzu Azuma (Chiba Keizai University) Yasushi Kawabata (Nagoya City University) Miki Matsuo (Kyushu International University) Yoichi Sugita (Japan External Trade Orgnization) Kazuo Mino (Kyoto University) Wanida Ngienthi (Assumption University, Thailand) Yuka Ohno (Hokkaido University) Takashi Komatsubara (Kyoto University) Krishnendu Ghosh Dastidar (Jawaharlal Nehru University, India) Hiroshi Fujii (Chiba Keizai University) Ronald W. Jones (University of Rochester, USA) Masao Oda (Ritsumeikan University) Takumi Naito (Waseda University) Yan Ma (Kobe University) Eden Yu (Chu Hai College of Higher Education, Hong Kong, China) Takeshi Ogawa (Senshu University) Fumio Dei (Kobe University) Yuichi Furukawa (Chukyo University) Rui Ota (Yokohama City University)"	Shiran Kaikan Yamauchi Hall, Kyoto University
2015/8/28	J-WEN Mentoring Workshop 2015	Donna Ginther (University of Kansas, USA) Takako Fujiwara-Greve (Keio University) Sayaka Nakamura (Nagoya University) Yuka Ohno (Hokkaido University)	Institute of Economic Research, Kyoto University
2015/11/29	International Symposium “Economic Transition and Income Inequality in China”	Shi Li (Beijing Normal University, China) Kai KAJITANI (Kobe University) Katsuji NAKAGANE (Tokyo University) Xinxin Ma (Hitotsubashi University) Kazufumi YUGAMI (Kobe University) Masashi HOSHINO (Waseda University) Takashi OSHIO (Hitotsubashi University)	Research Building No.2, Kyoto University
2015/12/5	9th Japan-Taiwan-Hong Kong Contract Theory Conference	Hitoshi Sadakane (Kobe University) Stephen Chiu (University of Hong Kong, China) Eric Szu-Wen Chou (National Tsing Hua University, Taiwan) Daisuke Hirata (Hitotsubashi University) Min-Hung Tsay (National Chung Cheng University, Taiwan) Mami Kobayashi (Ritsumeikan University) Hsuan-Chih Lin (Academia Sinica, Taiwan) Kim-sau Chung (Chinese University of Hong Kong, China)	Suzaku Campus, Ritsumeikan University
2016 2/5~6	1st International Conference on Evidence-based Policy	Michael Keen (IMF) Makoto Yano (Kyoto University) Nick Buck (University of Essex, UK) Mari Jibu (Japan Science and Technology Agency) Annelies Blom (University of Mannheim, Germany) Ryo Yamada (Kyoto University) Takashi Komatsubara (Kyoto University) Hitoshi Shigeoka (Simon Fraser University, Canada) Masahiro Kuroda (Japan Science and Technology Agency) Takao Kuramochi (Japan Science and Technology Agency) Fumihiko Matsuda (Kyoto University) Fang He (Keio University)	Shiran Kaikan Yamauchi Hall, Kyoto University (5th), Institute of Economic Research, Kyoto University (6th)

Social Contribution

Date	Title	Guest Speakers	Venue
2016 2/23~24	International Conference “Diversity of Institutional Settings and Path-dependency in Transition Economies”	Gerard Roland (University of California, USA) Geoffrey Wood (University of Essex, UK) Hiroaki Hayashi (University of Shimane) Satoshi Mizobata (Kyoto University) Norio Horie (University of Toyama) Ichiro Iwasaki (Hitotsubashi University) Martina Lubyova (Slovak Academy of Sciences, Slovakia) Pavol Babos (Slovak Academy of Sciences, Slovakia) Hiroshi Tanaka (Ritsumeikan University) Markku Sippora (University of Jyväskylä, Finland) Irina Olimpieva (Center for Independent Social Research, Russia) Yutaka Konishi (Gifu University) Katsumi Fujiwara (Osaka University) Andrei Belov (Fuku Prefectural University) Taku Suzuki (Teikyo University) Sadayoshi Otsu (Kobe University) Victor Gorschkov (Kaichi International University)	Institute of Economic Research, Kyoto University
2016 3/8~9	International Conference on Financial Risks and Their Management 2016	Katsuma sa Nishide (Yokohama National University) Elisa Alòs (Universitat Pompeu Fabra, Spain) Kensuke Ishitani (Meijo University) Christoph Frei (University of Alberta, Canada) Ryuichi Yamamoto (Waseda University) Tim Edwards (S&P Dow Jones Indices) Ciprian V. Marin (Lazard Asset Management) Tomohiro Hirano (The University of Tokyo) Kazuo Yamada (Nagasaki University) Asaf Cohen (University of Michigan, USA)	Research Building No.2, Kyoto University
2016/3/9	International Conference on “EU Economic Stagnation and Political Insecurity: Lessons for Asia”	Steven Rosefielde (University of North Carolina, USA) Olga Bobrova (St.Petersburg State University of Economics, Russia) Victor Gorshkov (Kaichi International University) Yoji Koyama (Niigata University) Christine Tsai (Zhejiang University, China) Bruno Dallago (University of Trento, Italy) Evžen Kočenda (Charles University, Czech Republic)	Institute of Economic Research, Kyoto University
2016 8/6~10	The 2016 Summer School of the Econometric Society in Kyoto	Atsushi Kajii (Kyoto University) Ariel Rubinstein (Tel Aviv University, Israel) In-Koo Cho (University of Illinois, USA) Efe A. Ok (New York University, USA)	Research Building No.2, Kyoto University
2016 8/27~28	International Conference on Financial Risks and Uncertainties	Nan Chen (The Chinese University of Hong Kong, China) Hitoshi Hayakawa (Hokkaido University) Sebastian Jaimungal (University of Toronto, Canada) Lingfei Li (The Chinese University of Hong Kong, China) Tomonori Nakatsu (Ritsumeikan University) Christopher Ting (Singapore Management University, Singapore) Kazutoshi Yamazaki (Kansai University) Kazuhiro Yasuda (Hosei University)	Hotel Oacity Kyowa in Miyakojima, Okinawa
2016/11/22	Hitotsubashi Decision Theory Workshop	Todd Sarver (Duke University, USA) Daisuke Nakajima (Otaru University of Commerce) Philipp Sadowski (Duke University, USA) David Ahn (University of California, Berkeley, USA) Asen Kochoy (University of Rochester, USA) David Dillenberger (University of Pennsylvania, USA)	Mercury Tower, Hitotsubashi University
2017 6/17~18	International Conference on Financial Risks and Uncertainties 2017	Hyun Jin Jang Ulsan (National Institute of Science and Technology, USA) Tomonori Nakatsu (Ritsumeikan University) Christopher Ting (Singapore Management University, Singapore) Yuan Tian (Ryukoku University) Nan Chen (The Chinese University of Hong Kong, China) Rusudan Kevkhishvili (Kyoto University) Kit Pong Wong (University of Hong Kong, China)	Ohama Nobumoto memorial hall in Ishigakijima, Okinawa

Date	Title	Guest Speakers	Venue
2017/6/22	International Conference "Institutional Changes and Quality of Economic Growth in China"	Kai KAJITANI (Kobe University) Takuma KOBAYASHI (Matsuyama University) Tian ZHU (China Europe International Business School, China) Yang YAO (Peking University, China)	Institute of Economic Research, Kyoto University
2017 8/29~30	TMU Workshop on Finance 2017	Sebastian Jaimungal (University of Toronto, Canada) Michael Tehranchi (University of Cambridge, UK) Hoi Ying Wong (Chinese University of Hong Kong, China) Kit Pong Wong (University of Hong Kong, China)	Marunouchi Satellite Campus, Tokyo Metropolitan University / TMU
2017 12/8~10	Kyoto International Conference and EACES - Asia Workshop "The Future of Transition Economics: Emerging Multinationals and The Historical Perspective"	Kalman Kalotay (UNCTAD) Sass Magdolna (Hungarian Academy of Sciences, Hungary) Xuanli Xie (Peking University, China) Zoia Podoba (Saint-Petersburg State University, Russia) Satoshi Mizobata (Kyoto University) Jehoon Park (Incheon National University, Korea) Sergei V. Zhuravlev (Institute of Russian History, RAN, Russia) Byung-Yeon Kim (Seoul National University, Korea) Wuyue You (Central University of Finance and Economics, China) Ichiro Iwasaki (Hitotsubashi University) Irina Denisova (NES, Russia) Hiroaki Hayashi (Ristumeikan University)	Institute of Economic Research, Kyoto University (8th) Shirankaikan Annex, kyoto University (9-10th)
2018 3/8~9	Conference on Institutions, Markets, and Market Quality	Makoto Yano (Kyoto University) Youngsub Chun (Seoul National University, Korea) Takayuki Oishi (Meisei University) Yuichi Furukawa (Chukyo University) Yu Awaya (University of Rochester, USA) Yoichi Sugita (Hitotsubashi University) Atsumasa Kondo (Shiga University) Takakazu Honryo (University of Mannheim, Germany) Taiji Furusawa (Hitotsubashi University) Harrison Cheng (University of Southern California, USA) Krishnendu Dastidar (Jawaharlal Nehru University, India) Fumihiko Matsuda (Kyoto University) Shigeru Hirota (Cabinet Office, Government of Japan) Saul Estrin (London School of Economics, UK) Satoshi Mizobata (Kyoto University) Jeff Nugent (University of Southern California, USA) Kazuo Nishimura (Kobe University) Takashi Kamihigashi (Kobe University) Eden S. H. Yu (Chu Hai College of Higher Education, Hong Kong) Ma Yan (Kobe University) Rui Ota (Yokohama City University) Yuya Takahashi (Johns Hopkins University, USA)	Yamauchi Hall of Shiran Kaikan, Kyoto University
2018/3/12	International Conference on Advanced Research on the International Politics and Economics:EU, Russia and China	Du Jin (Takushoku University) Zhikai Wang (Zhejiang University, China) Steven Rosefielde (The University of North Carolina, USA) Kumiko Haba (Aoyama Gakuin University) Masahiko Yoshii (Kobe University) Victor Gorshkov (Kaichi International University)	Institute of Economic Research, Kyoto University
2018/3/21	Kyoto Special Seminar on Emerging Multinationals	Andrei Panibratov (Saint Petersburg State University, Russia) Victor Gorshkov (Kaichi International University) Yumiko Nakahara (Kyushu Sangyo University) Takuma Kobayashi (Matsuyama University) Satoshi Mizobata (Kyoto University) Olga Bobrova (Saint Petersburg State University of Economics, Russia)	Institute of Economic Research, Kyoto University

Social Contribution

Date	Title	Guest Speakers	Venue
2018/6/25	Kyoto Special Conference on Economic Institutions	Geoffrey Wood (University of Essex, UK) Shabneez Bhankaraully (Alliance Manchester Business School, UK) Gerhard Schnyder (Loughborough University, UK) Douglas B. Fuller (Zhejiang University, China) Yuanyuan Gong (Okayama University) Jennifer Johns (University of Liverpool, UK) Matthew Allen (Alliance Manchester Business School, UK)	Institute of Economic Research, Kyoto University
2018/11/7	Advanced Study on Transition Economics and Comparative Economics	Ichiro Iwasaki (Hitotsubashi University) Evzen Kocenda (Charles University, Czech) Satoshi Mizobata (Kyoto University) Byung-Yeon Kim (Seoul National University, Korea) Vasiliy A. Anikin (National Research University Higher School of Economics, Russia) Takuma Kobayashi (Matsuyama University) Xinxin Ma (Hitotsubashi University) Kazuho Yokogawa (Kanagawa University)	Institute of Economic Research, Kyoto University
2019 1/25~27	Kyoto International Conference Civil Society, Firms, and Government in Post-Transition and Emerging Economies	Hiroaki Hayashi (Ritsumeikan University) Erdenebat Bataa (National University of Mongolia, Mongolia) YangYao (Peking University, China) Geoffrey Wood (University of Essex, UK) Julia Lezhnina (National Research University Higher School of Economics, Russia) Vasily Anikin (National Research University Higher School of Economics, Russia) Kazuho Yokogawa (Kanagawa University) Katsumi Fujiwara (Osaka University) Mihoko Satogami (Kyoto University) Victor Gorshkov (Kaichi International University) Tomoyo Toyota (The University of Shimane) Horinori Fushita (The Japan Institute of International Affairs) Xuanli Xie (Peking University, China) DanDan Zhang (Peking University, China) Keiji Natsume (Aichi Toho University) Yumiko Nakahara (Kyushu Sangyo University) Takuma Kobayashi (Matsuyama University)	Institute of Economic Research, Kyoto University
2019 2/19~20	Workshop on Financial Risks and Their Management	Nan Chen (The Chinese University of Hong Kong, China) Larry G. Epstein (Boston University, USA) Sebastian Gryglewicz (Erasmus University Rotterdam, The Netherlands) Hyeng Keun Koo (Ajou University, Korea) Yong Hyun Shin (Sookmyung Women's University, Korea) Tak-Yuen Wong (Shanghai University of Finance and Economics, China)	Ryukoku University, Wagenkan
2019/3/5	Workshop on Recent Developments in Econometric Theory and Its Applications 2019	Rusudan Kevkhishvili (Kyoto University) Masamune Iwasawa (Capital University of Economics and Business, China) Hongjun Li (Capital University of Economics and Business, China) Yoshihiko Nishiyama (Kyoto University) Shandre Thangavelu (Adelaide University, Australia) Yoko Konishi (RIETI)	Institute of Economic Research, Kyoto University
2019/12/7	The 13th East Asian Contract Theory Conference	Jimmy Chan (Chinese University of Hong Kong, China) Chang Koo Chi (NHH-Norwegian School of Economics, Norway) Michiko Ogaku (Nagasaki University) Eric Chou (Tsinghua University, China) Joonbae Lee (Korea Information Society Development Institute (KISDI), Korea) Wei-Cheng Chen (Academia Sinica, Taiwan) Fumitoshi Moriya (Kobe City University of Foreign Studies) Chen Zhao (University of Hong Kong, China)	Kannai Media Center, Kanto Gakuin University

Date	Title	Guest Speakers	Venue
2020 3/4~5	Kyoto International Workshop: Advanced Study on Transition Economics and Comparative Economics	Evzen Kocenda (Charles University, Czech Republic) Xinxin Ma (Toyama University) Nguyen Thi Ngoc Anh (National Economics University, Vietnam) Enkhmandakh Enkhchimeg (Kyoto University) Go Yano (Kyoto University) Masahiro Tokunaga (Kansai University) Ichiro Iwasaki (Hitotsubashi University) Satoshi Mizobata (Kyoto University)	Institute of Economic Research, Kyoto University
2020/3/20	Kyoto International Workshop: Advanced Studies on Comparative Economics	Zoia Podoba (St. Petersburg State University, Russia) Nguyen Thi Ngoc Anh (National Economics University, Vietnam) Olga Bobrova (St. Petersburg State University of Economics, Russia) Victor Gorshkov (Kaichi International University)	Institute of Economic Research, Kyoto University
2020 12/3~4, 8	Symposium "100years of World Wars and Post-War Regional Collaboration and Good Governance -How to Make New World Order?-"	Glen S. Fukushima (Center for American Progress, USA) David Malone (United Nation University) Dumitru Preda (Board Member and Treasurer CHIR, Romania) Miguel Angel Vecino (Historian. Member of the Committee of History of International Relations) Claudiu-Lucian Topor (Alexandru Ioan Cuza University, Iasi, Romania) Akiko Iimori (Waseda University) Valdo Ferretti (University of Rome, Italy) Motoko Shuto (Tsukuba University) Soavapa Ngampramuan (Ramkhamhaeng University, Thailand) Alfredo Canavero (University of Milan, Italy) Giulia Lami (University of Milan, Italy) Tomoya Kuroda (Senshu University) Satoru Miyamoto (Seigakuin University) Wataru Sawamura (Asahi Shimbun - Washington Bureau) Yoichi Kibata (University of Tokyo) Xin Du (Chinese Professors Association) Klaus Vietze (Minister, Deputy Chief of Mission, German Embassy) Kumiko Haba (Aoyama Gakuin University) J. Patrick Boyd (Aoyama Gakuin University) Chris G. Pope (Kyoto Women's University) Pradeep Singh Chauhan (Kurukshetra University, India) Bruno Dallago (Professor of Trento University, Italy) Olga Bobrova (St. Petersburg State Economic University, Russia) Steven Rosefelde (North Caroline University, USA) Fumiharu Mieno (SCJ associate member) Sang Chul Park (Korea Polytechnic University, Korea) Zoya Podoba (St. Petersburg State University, Russia) Victor Gorshkov (Kaichi International University) Hiroaki Hayashi (Ritsumeikan University) Takuma Kobayashi (Matsuyama University)	in-Tokyo-Kyoto Online Conference Networks in the World/ Japan, Asia, Europe, and America
2021/12/22	Seminar on Macroeconomics and Economic Systems "KIER Young Scholar's Workshop in 2021"	Satoshi Mizobata (Kyoto University, Ritsumeikan University) Elnur Kanybekov (Ritsumeikan University) Bakyt Sydykov (Ritsumeikan University) Enkhchimeg Enkhmandakh (Kyoto University) Abel Polese (Tallin University, Estonia) Gautam Prakash (Soka University) Karki Shyam Kumar (Soka University)	Institute of Economic Research, Kyoto University
2022/1/18	TRANSDISCIPLINARY ECONOMETRICS & DATA SCIENCE SEMINAR (TEDS)	Thomas Kneib (Georg-August-University Göttingen, Germany)	Online Seminar
2022/2/9	TRANSDISCIPLINARY ECONOMETRICS & DATA SCIENCE SEMINAR (TEDS)	Xiaohua Yu (Georg-August-University Göttingen, Germany)	Online Seminar

Social Contribution

Date	Title	Guest Speakers	Venue
2023/4/3	Kyoto Spring Workshop on “Digitalization and Macro Prudence Policy”	Ryuichiro Izumi (Wesleyan University, USA) Kohei Iwasaki (Osaka University, ISEI) Jihwan Do (Yonsei University) Hiroki Fukai (Kansai University) Tarishi Matsuoka (Tokyo Metropolitan University) Makoto Watanabe (Kyoto University, KIER) Yu Awaya (University of Rochester) Ryo Jinnai (Hitotsubashi University, IER) Sangeeta Pratap (City University of New York) Todd Keister (Rutgers University)	Institute of Economic Research, Kyoto University
2023/4/20	“Seminar Series” Jointly with Management Seminar and Applied Microeconomics Seminar	Randall Morck (University of Alberta, Canada)	Faculty of Law and Faculty of Economics East Bldg., Kyoto University
2023/7/1	13th Decision Theory Workshop	Fernando Payro (Universitat Autònoma de Barcelona, Spain) Kota Saito (Caltech/California Institute of Technology, USA) Jawwad Noor (Boston University, USA) Giacomo Lanzani (MIT/Massachusetts Institute of Technology, USA) Ryota Iijima (Yale University, USA) Mira Frick (Yale University, USA) Christopher Chambers (Georgetown University, USA)	Mercury Tower, Hitotsubashi University
2023 8/17~18	Search and Matching Workshop in Asia-Pacific	Makoto Watanabe (Kyoto University) So Kubota (Waseda University) Jonathan Chiu (Bank of Canada) Sephora Mangin (ANU) Xiaoming Cai (Peking University) Enchuan Shao (University of Saskatchewan) Kohei Iwasaki (Osaka University) Ayushi Bajaj (Monash) Yilei Liu (SWUFE) Han Han (PKU) Yosuke Igarashi (Hokkaido University) Zhifeng Cai (Rutgers University) Similan Rujiwattanapong (Waseda University) Liangjie Wu (EIEF) Wei Qiao (Jinan University) Ying Zhou (City University of Hong Kong) Kazuhiro Teramoto (Hitotsubashi University)	Canon Institute for Global Studies
2023/8/25	Workshop on the quantitative endogenous agglomeration models with Gilles Duranton (U Penn, Wharton School)	Gilles Duranton (The University of Pennsylvania, USA) Tomoya Mori (Kyoto University) Minoru Osawa (Kyoto University) Yosuke Kogure (Yachiyo Engineering) Daisuke Murakami (Institute of Statistical Mathematics)	Institute of Economic Research, Kyoto University
2023/10/17	Kyoto Autumn Workshop on “Digitalization and Macro-prudential Policy”	So Kubota (Waseda University) Bo Hu (Fudan University, China) Tetsuya Hoshino (ITAM, Mexico) Tarishi Matsuoka (Tokyo Metropolitan University) Keiichi Kobayashi (Keio University) Kosuke Aoki (University of Tokyo) Kohei Iwasaki (Osaka University) Lucas Herrenbrueck (Simon Fraser University, Canada) Gadi Barlevy (Federal Reserve Bank of Chicago, USA)	Institute of Economic Research, Kyoto University

Date	Title	Guest Speakers	Venue
2023/10/28	Workshop on quantitative methods for multiple-equilibrium agglomeration models	Kristian Behrens (Université du Québec à Montréal, Canada) Tomoya Mori (Kyoto University) Minoru Osawa (Kyoto University) Yosuke Kogure (Yachiyo Engineering)	Institute of Economic Research, Kyoto University
2024/1/12	KIER-CAPS Research Workshop on Applied Economics	Naoki Tani (Kyoto University) Yukiko Saito (Waseda University) Taro Ohno (Ministry of Finance) Tomohiro Iguchi (Ministry of Finance) Tetsushi Horie (Gakushuin University) Chia-Hui Chen (Kyoto University) Real Arai (Ryukoku University)	Institute of Economic Research, Kyoto University
2024 1/31~2/1	International Conference on the Varieties of State-Led Capitalist Economic Systems	Jung Seung Ho (Incheon National University, Korea) Satoshi Mizobata (Kyoto University) Victor Gorshkov (University of Niigata Prefecture) Miyuki Nakamura (Soka University) Yoshinobu Tatewaki (Asian Development Bank) Olga Kupets (Kyiv School of Economics) Mihoko Satogami (Soka University) Enkhchimeg Enkhmandakh (Kyoto University) Andreas Nölke (Goethe University Frankfurt, Germany) Jehoon Park (Incheon National University, Korea) Takeo Hidai (Wako University) Takuma Kobayashi (Matsuyama University) Tomoo Marukawa (University of Tokyo)	Research Building No. 2, Kyoto University
2024/3/11	Kyoto Spring Workshop on "Cryptocurrencies and Central Bank Digital Currency"	Shunya Noda (University of Tokyo) Kohta Takehara (Tokyo Metropolitan University) Fan Liang (Loyola Marymount University, USA) Han Han (Peking University, China) Tarishi Matsuoka (Tokyo Metropolitan University) Roji Hiraguchi (Meiji University) Liang Wang (University of Hawaii, USA) Shengxing Zhang (Peking University, China)	Institute of Economic Research, Kyoto University
2024/3/13	Kyoto Spring Workshop on "Digitalization and Macro-prudential Policy"	Tadashi Sekiguchi (Kyoto University) Yilei Liu (Southwestern University of Finance and Economics, China) Bo Hu (Fudan University, China) Chiaki Hara (Kyoto University) Yoske Igarashi (Hokkaido University) Yu Zhu (Renmin University of China, China) Shengxing Zhang (Peking University, China) Fabrizio Mattesini (University of Rome, Italy)	Institute of Economic Research, Kyoto University
2024/3/19	The 2nd KIER-CAPS Research Workshop on Applied Economics	Satoshi Mizobata (Kyoto University) Olga Kupets (Kyiv School of Economics, Ukraine) Hyunjae Kang (Kyoto University) Taro Ohno (Ministry of Finance) Naoki Tani (Kyoto University) Real Arai (Ryukoku University)	Institute of Economic Research, Kyoto University
2024/3/27	Workshop on Sustainable Finance	Tomonori Uchiyama (Tokyo Metropolitan University) Yuan Tian (Ryukoku University) Ester Trutwin (University of Zurich and Swiss Finance Institute, Swiss) Thorsten Hens (University of Zurich and Swiss Finance Institute, Swiss)	Institute of Economic Research, Kyoto University

Track Record

KIER Track Records

The Kyoto Institute of Economic Research consistently comes first or second as an economic research institute in Japan. In particular, KIER can cite top-class research results in Japan using both the Social Science Citation Index, which is the most widely used index for evaluating research results, and the number of articles published in international scholastic journals (according to the track record of publishing in the top-ten ranked economic academic journals created by the European Economic Association).

Of all the research conducted at the Institute, “The Spatial Economy” (MIT Press) by specially-appointed professor Masahisa Fujita’s, and co-authored with P. Krugman (Princeton University) and A. J. Venables (London School of Economics), can be cited as representative of making a global impact. This book is a must-read for this field, and the number of times it has been cited as of 2010 has reached 1,000.

Honors / Awards		
Telecom Social Science Award	1970	Takamitsu SAWA
Nikkei Prize for Economics Books	1970	Takamitsu SAWA
Nikkei Prize for Economics Books	1971	Masahiko AOKI
Medal with Purple Ribbon	1985	Masao BABA
Medal with Purple Ribbon	1987	Hisao ONOE
The Japan Academy Award	1990	Masahiko AOKI
Hiromi Arisawa Prize for the Association of American University Presses	1991	Masahiko AOKI
1st Prize, European Meeting on Cybernetics and Systems Research	1992	Fumiko SEO
Medal with Purple Ribbon	1996	Kazuo KOIKE
The Energy Forum Award ; Award for Spread Enlightenment	1996	Takamitsu SAWA
Wakayama Prefecture Culture Prize	1998	Takamitsu SAWA
The Energy Forum Award	1998	Takamitsu SAWA
The Nakahara Prize, Japanese Economic Association	1999	Akira OKADA
Nikkei Prize for Economics Books	2000	Masahisa FUJITA
The Annual Award for Research Monographs on Labor	2001	Kenn ARIGA
Nikkei Prize for Economics Books	2002	Hiroshi OSANO
The William Alonso Memorial Prize for Innovative Work in Regional Science	2002	Masahisa FUJITA
The Japan Institute of energy :The award for Distinguished paper	2004	Takamitsu SAWA
The Sakashita Prize, Applied Regional Science Conference	2004	Tomoya MORI
Paper Award of Japan Society for Fuzzy Theory and Intelligent Informatics	2004	Fumiko SEO, Takao FUKUCHI
Prize for Publication, Mathematical Society of Japan	2005	Kazuo NISHIMURA
IJET LionelW. McKenzie Prize for contributions to economic theory	2007	John STACHURSKI
Excellent presentation award in 6th Annual Meeting (2007) for The Japan Association for Research on Testing	2007	Takuya KIMURA
Third Japan Society for the Promotion of Science (JSPS) Prize	2006	Atsushi KAJII
Medal with Purple Ribbon	2007	Takamitsu SAWA
JSIE Kojima Kiysohi Prize, The Japan Society of International Economics	2007	Ryuhei WAKASUGI
Honorary Degree of Doctor, University of Aix- Marseilles II	2007	Kazuo NISHIMURA
The Nakahara Prize, Japanese Economic Association	2008	Atsushi KAJII
2008 JAIBS Award, Japan Academy of International Business Studies	2008	Ryuhei WAKASUGI
Nikkei Prize for Economics Books	2008	Kazuo NISHIMURA, Makoto YANO
Japan Statistical Society Research Award 2009	2009	Yoshihiko NISHIYAMA
JSIE-Kojima Kiysohi Prize, The Japan Society of International Economics	2009	Kazumichi IWASA
Japan Statistical Society Ogawa Research Prize	2010	Ryo OKUI
Kyoto Shimbun Grand Award in Culture/Academy	2010	Kazuo NISHIMURA
Member of the Japan Academy	2010	Masahisa FUJITA
Medal with Purple Ribbon	2012	Kazuo NISHIMURA
Member of the Japan Academy	2012	Kazuo NISHIMURA
Tenth Japan Society for the Promotion of Science (JSPS) Prize	2013	Tomoyuki NAKAJIMA
11th Japan Society for the Promotion of Science (JSPS) Prize	2014	Tadashi SEKIGUCHI
The Order of the Sacred Treasure, Gold and Silver Star	2016	Masahisa FUJITA
The Order of the Sacred Treasure, Gold and Silver Star	2019	Takamitsu SAWA
The Order of the Sacred Treasure, Gold and Silver Star	2019	Kazuo NISHIMURA
NTJ Richard Musgrave Prize	2021	Takashi UNAYAMA
Member of the Japan Academy	2021	Makoto YANO
Member of the Japan Academy	2023	Takamitsu SAWA
Suntory Prize for Social Sciences and Humanities	2023	Takashi UNAYAMA
Nikkei Prize for Economics Books	2023	Takashi UNAYAMA

Personnel Training

KIER uses young researchers with degrees from graduate schools both from Japan and abroad as term-limited instructors to supply opportunities to experience research and teaching. From 2003 until now, 19 young researchers have been appointed, and are active as researchers working in educational and research bodies such as universities since the end of their appointment period. Further, young researchers are also used as fixed-term assistant teachers who perform joint research activities with employees.

In addition, various part-time researcher systems are used to accept Kyoto University part-time researchers (research organization researchers), GCOE researchers, and Japan Society for the Promotion of Science (JSPS) special researchers for personnel training.

Moreover, young researchers are actively supported and trained through teaching research to PhD candidates in lectures held with the cooperation of the Graduate School of Economics and Faculty of Economics, Kyoto University.

KIER also actively supports domestic/international researchers' community and a variety of seminars and international conferences for young researchers. In FY2016, the Institute supported

the Econometric Society, Summer Workshop on Economic Theory (SWET). Comparative Economics Workshop for International Young Researchers, and so on. It was awarded the Education Merit Award by the Ministry of Education and Training of Viet Nam.



Number of Young Researchers (PD) Accepted

Fiscal Year	FY 2019	FY 2020	FY 2021	FY 2022	FY 2023
Total Number	14	12	11	8	6

Latest Main Appointments among PD and Student Teachers (FY2003~)

Universities

Hokkaido University, Otaru University of Commerce, Tohoku University, Yamagata University, University of Tsukuba, The University of Tokyo, Tokyo Tech, Hitotsubashi University, Yokohama National University, Nagoya University, Shiga University, Kyoto University, Osaka University, Kobe University, Wakayama University, Hiroshima University, Kyushu University, Nagasaki University, Aomori Public University, Tokyo Metropolitan University, Nagoya City University, Kobe City University of Foreign Studies, Tottori University of Environmental Studies, Shimonoseki City University, Ehime University, Sapporo Gakuin University, Tohoku Gakuin University, Chiba University of Commerce, Kanagawa University, Nihonbashi Gakkan University, Aoyama Gakuin University, Asia University, Keio University, Seikei University, Soka University, Chuo University, Tokyo Keizai University, Hosei University, Waseda University, Niigata Sangyo University, Nagoya Gakuin University, Gifu Shotoku Gakuen University, Kyoto Gakuen University, Kyoto Bunkyo University, Doshisha University, Ritsumeikan University, Ryukoku University, Osaka Gakuin University, Osaka University of Economics, Kansai University, Kinki University, Kwansei Gakuin University, Konan University, Kyoto Sangyo University, Tezukayama University, Kyoto Seika University, Hiroshima University of Economics, Matsuyama University, Kyushu International University, Kurume University, Fukuoka University, Ritsumeikan Asia Pacific University, University of Melbourne, Universidad Nacional Autonoma de Mexico, Southwestern University of Finance and Economics

Governmental Organizations

Technology Research Institute of Osaka Prefecture, RIKEN, Institute of Developing Economies, Policy Research Institute (Ministry of Finance), Ehime Prefecture, Food and Agriculture Organization of the United Nations, Japan International Cooperation Agency (JICA), Japan Science and Technology Agency (JST), Japan Agency for Local Authority Information Systems (J-LIS)

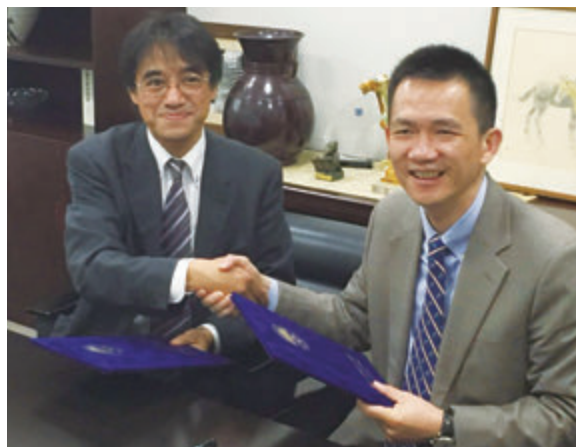
Private Firms

Institute of Intellectual Property, NTT, MRI Research Associates, Inc., AXA Life Insurance, Institute for Areal Studies Software Research Associates, Inc. (SRA), Toyota Motor Corporation, EPS Corporation, Shinsei Bank, Recruit Holdings Co., Ltd., Institute of Transportation Economics, Keizai Doyukai (Japan Association of Corporate Executives), Sumitomo Mitsui Card Co., Ltd., IBM Japan Services Company Ltd., Mitsubishi UFJ Trust and Banking Corporation, Mitsubishi Research Institute, Inc., Chubu Region Institute for Social and Economic Research, Sumitomo Mitsui Banking Corporation, Simplex Financial Holdings Co., Ltd., Asset Management ONE Co., Ltd., Nanjing Securities, Mizuho Financial Group Inc., Nomura Research Institute Ltd., Advanced Media, Inc., Asahi WoodTec Corporation, SMBC Nikko Securities Inc., NTT DATA Mathematical Systems Inc., Keyence Corporation, KPMG Consulting Co., Ltd., Japan WillTech Solution Co., Ltd., MetLife, Inc., KPMG Tax Corporation, KYOSO, Renewable Energy Institute, Mazda Motor Corporation

Track Record

International Exchange

KIER is widely known as an international research center for economic theory. The International Journal of Economic Theory, which is published jointly with Keio University, is highly regarded as a global specialist journal, and is the first international journal of economic theory edited primarily by Japanese researchers. Further, in addition to establishing posts for non-Japanese visiting teachers and inviting world-leading researchers, KIER is also engaged in various joint international research, and is ceaselessly visited by non-Japanese researchers. In light of this track record, KIER has signed agreements with overseas universities in America, France, and elsewhere, and is actively engaging in research exchange.



Academic Exchange Agreements with Foreign Research Institutions

County	Institution	Period
Russian Federation	Higher School of Economics	4/2/2007 ~ 4/1/2027
French Republic	Groupement de Recherche en Economie Quantitative d' Aix Marseille (GREQAM)	11/28/2007 ~ 1/29/2028
Republic of Korea	The Institute of Economic Research, Seoul National University	2/22/2008 ~ 2/17/2028
Hungary	The Institute of Economics, Hungarian Academy of Sciences	3/23/2010 ~ 7/23/2027
People's Republic of China	China Center for Economic Research, Peking University	6/22/2017 ~ 6/21/2027
Republic of Korea	Yonsei University	3/27/2019 ~ 3/26/2029

Researchers from Abroad

Fiscal Year	FY 2019	FY 2020	FY 2021	FY 2022	FY 2023
Area					
Asia	9(3)	2(2)	0	2	13
North America	7(2)	1	1	6	18(2)
South & Central America	0	0	0	0	0
Europe	12(1)	2(2)	2(1)	14(4)	12(2)
Oceania	6(0)	0	0	0	2(1)
Middle East	2(0)	0	0	2	1
Africa	0	0	0	0	0
Total	36(6)	5(4)	2(1)	24(4)	46(5)

Note: Figures in parentheses describe long-term appointments within the total number.

Library

Ever since its opening in 1965, the Library of the Institute of Economic Research has been actively gathering various data, centering on specialist publications and statistical data relating to economic studies. As of March 2024, the library houses in excess of 90 thousand specialist publications and data in total to support the activities of researchers both from Japan and abroad.

Library Hours

- Mon to Fri 9:00 to 17:00
- Closed on Sat, Sun, holidays, founder's day (18 June), 1 to 5 April, the summer holiday period, the winter holiday period, and the first day of every month (Closed on the following open day if the first day is a holiday.)
- Use of the Library by Non-Students
When using, please present some form of identification.
Browsing and temporary removal for copying only are permitted.

McKenzie Library (Total collection 1,495 publications)

These publications were donated to the Kyoto Institute of Economic Research by Rochester University professor emeritus Lionel McKenzie (1919.1.26-2010.10.12). After graduating from Duke University in the United States, Professor McKenzie studied at Princeton University graduate school, where he obtained both his masters and PhD in economics, and went on to teach at both MIT and Duke University. Following his appointment as professor to Rochester University in 1957 until his retirement, Professor McKenzie actually strove to train researchers over the course of 32 years. Every time he visited Japan, Professor McKenzie held lectures and talks at KIER seminars, as well as visiting and attending international symposiums sponsored by KIER. Consequently, he had close ties to Kyoto University and so he donated his massive library to KIER in October 2003. Professor McKenzie's students are active around the world, and there are many of his students who are teaching at other universities in Japan as well. Still he donated his books to the Kyoto Institute of Economic Research, which is an unparalleled honor for the institute. Making the most of this opportunity, KIER established the McKenzie Library within the institute itself, which continues to be of use in improving the research standards of both faculty and students at Kyoto University.



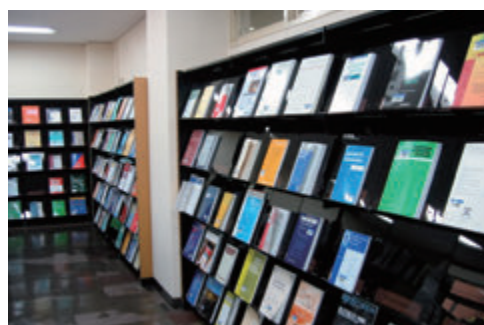
McKenzie Library



Library



Library



Library

Total number of publications

Classification	library holdings
Japanese books	45,329
Western Books	48,082
Total Collection	93,411
Japanese Periodicals	2,832
Western Periodicals	1,317
Total No. of Periodicals	4,149

(as of March 2024)

On-site Facility for Remote Access to Official Statistical Data

Official statistical microdata, which is questionnaire answers before tabulation of sample surveys and censuses conducted by national government agencies, has been utilized for academic research of public interest under Article 33 of the Statistics Act. However, the revised Statistical Law, in effect from May 2019, expanded the scope of official statistical microdata use, limiting it to on-site use. On-site use is remote use from a facility with information security set up at universities and research institutes in collaboration with the National Statistics Center. Officially authorized researchers may access official statistical micro data using a thin-client PC in an on-site facility for their analysis. In addition, government plans to unify several academic usage methods of official statistical microdata for on-site use.

Given the importance of research that uses official statistical microdata both in the social humanities and natural sciences, our institute established the On-Site Facility for Remote Access to Official Statistical Data in March 2019 with approval from the National Statistics Center. Furthermore, our institute even opens the facility to researchers outside Kyoto University who have permission from the government to use official statistical microdata. The Official Statistics On-site Facility Management Office manages and operates the facility and plans to carry out various activities to improve the research environment, promote research, and encourage the use of the facility in studies with official statistical microdata. Accordingly, members of our institute and visiting or specially appointed faculty members invited from outside the university collaborated to achieve these aims.

The facility has two thin client PCs to simultaneously accommodate two sets of users. Thin client PCs remotely control virtual PCs in the Statistics Center (Central Data Management Facility) via SINET (Scientific Information Network connecting universities and research institutes) and not the Internet. According to the Statistical Center's rules, no privately owned PCs, photo cameras, recording devices (video cameras, voice recorders, etc.), wireless LAN terminals (iPads, Wi-Fi routers, etc.), cell phones, or other communication devices are allowed. In addition, a network camera was installed above the thin client PC, and the users are monitored.

Those who wish to use the facility can apply through an application page on a dedicated website. The operating hours are from 9:30 a.m. to 5:00 p.m. (except on weekends, national holidays, Foundation Day of Kyoto University (June 18), and summer and winter holidays).

Reception desk: On-site facility management and operation counter, Institute for Economic Research, Kyoto University
email: onsite@kier.kyoto-u.ac.jp



Finances

Total Budget (National School Special Accounts and University Grants)

Unit / 1,000 Yen

Fiscal Year		FY 2019	FY 2020	FY 2021	FY 2022	FY 2023
Item						
University Grants		419,586	391,424	372,199	366,220	409,672
Breakdown	Personnel Expenses	328,902	300,692	254,427	270,953	284,902
	Cost of Supplies	90,684	90,732	117,772	95,267	124,770

Grants-in-Aid for Scientific Research Expenses (KAKENHI)

Unit / 1,000 Yen

Fiscal Year		FY 2019	FY 2020	FY 2021	FY 2022	FY 2023
Item						
Number of Grants		10	14	20	25	5
Amount of Grants		10,650	24,722	37,719	38,048	28,933

Dose not include share of expenses or Grant-in-Aid for JSPS Fellows. Direct accounting only.

External Funds

Unit / 1,000 Yen

Fiscal Year		FY 2019	FY 2020	FY 2021	FY 2022	FY 2023
Item						
Entrusted Research Fund	Number	2	3	2	3	2
	Amount	22,016	15,863	17,401	17,627	7,461
Collaborative Research with Private Sector	Number	2	3	3	3	1
	Amount	21,950	22,210	18,977	17,880	6,105
Donations	Number	0	4	1	2	2
	Amount	0	4,850	1,200	3,882	337
Total	Number	4	10	6	8	5
	Amount	43,966	42,923	37,578	39,389	13,903

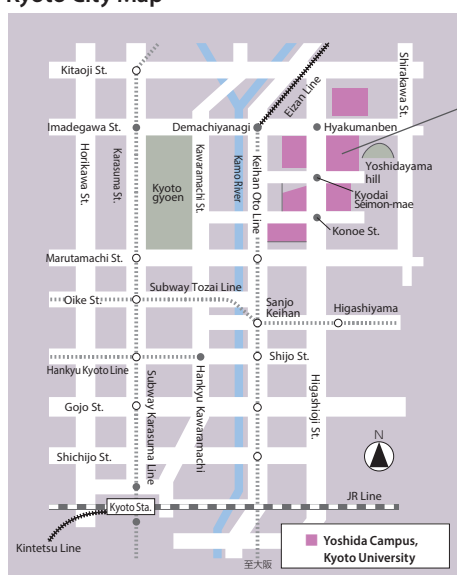
Chronological Table

March 1962	The establishment of the Institute of Economic Research in Kyoto University was determined, following the partial revision of The National School Establishment Law in Law No. 36 published in 1962.
April 1962	The Institute of Economic Research was established with two research divisions, Industrial Structure and Comparative Industry.
May 1962	The administrative office was established in the main campus, Kyoto University.
December 1962	A support group for constructing the institute was organized.
August 1963	The institute was moved to a temporary building in Yoshida-Shimo Adachi-cho, Sakyo-ku. (Part of the research rooms remained in the west area of the campus.)
April 1964	Two new research divisions, Local Economy and Resource Economy, were established according to ordinance No. 10 of the Ministry of Education.
July 1964	The construction of a new building was begun by the above-mentioned support group.
May 1965	The construction of the new building was completed and the building was given to the institution by the support group. The institute was moved to the new building.
April 1966	Two new research divisions, Planned Economy and Industrial Statistics, were established according to ordinance No. 24 of the Ministry of Education.
April 1968	The three divisions, Industrial Structure, Resource Economy and Industrial Statistics, were transferred to experimental divisions.
October 1972	A celebration party and memorial lecture meeting were held in the institute on the occasion of the 10th anniversary. A celebration party and memorial lecture meeting were held at Asahi-Shinbun hall in Osaka on the occasion of the 10th anniversary.
April 1976	The Local Economy Division was transferred to an experimental division.
April 1977	The Environmental Economy Division was established according to ordinance No. 15 of the Ministry of Education.
April 1978	The Planned Economy Division was transferred to an experimental division.
April 1979	The Comparative Economy System Division was established according to ordinance No. 12 of the Ministry of Education.
April 1981	The Contemporary Economic Analysis Division (Visiting research division) was established according to ordinance No. 12 of the Ministry of Education. The main research building was extended to a four story building.
November 1982	A memorial lecture meeting was held at the Culture Information Center of Osaka Prefecture on the occasion of the 20th anniversary.
December 1982	A memorial lecture meeting was held in the institute on the occasion of the 20th anniversary.
April 1983	The Comparative Economic Analysis Division (Foreign visiting research division) was established according to ordinance No. 11 of the Ministry of Education.
April 1986	Ordinance No. 19 of the Ministry of Education reorganized the institute into four major research divisions of Quantitative Industrial Analysis, Economic Planning, Resource Environment, and Comparison of Economies, and 12 research areas.
April 1991	A research area was added, amounting to 13 research areas.
October 1992	A memorial lecture meeting was held at the Faculty of Economics on the occasion of the 30th anniversary. A memorial symposium was held at Senri Life Science Center in Toyonaka on the occasion of the 30th anniversary.
March 1993	The Comparative Economic Analysis Division (Foreign visiting research division) was closed.
April 1993	The International Political Economy Division (Foreign visiting research division) was established according to ordinance No. 19 of the Ministry of Education.
June 1994	The National Wealth Division was established according to ordinance No. 24 of the Ministry of Education, amounting to 5 major research divisions and 15 research areas.
April 2000	The Research Center for Financial Engineering was established.
October 2001	Endowed research division "Applied Financial Engineering Division (Sponsored by Nomura Securities Group)" was established for a time period of until September 30, 2004
April 2002	The Economic Planning Division was renamed as the Economics of Complex Systems Division according to the law amending The National School Establishment Law.
October 2002	A memorial symposium and celebration party were held at Kyoto International Community House on the occasion of the 40th anniversary.
November 2002	A memorial symposium and celebration party were held at Gakujutu-Sogo Center (Hitotsubashi Memorial Hall) in Tokyo on the occasion of the 40th anniversary.
February 2004	Professor McKenzie, Professor emeritus of University of Rochester, received the title of Honorary Doctor of Kyoto University. The McKenzie Library was opened with books donated by Professor McKenzie, Professor emeritus of University of Rochester.
April 2004	The institute was reorganized into three major research divisions of the Economic Information Analysis, Economic Institution, Public Policy, and two research centers of Financial Engineering and Economics of Complex Systems. The Tokyo branch of the Institute of Economic Research was opened in Marunouchi, Tokyo. (for a time period of until January 31, 2012)
October 2004	The time period for the endowed research division "Applied Financial Engineering Division (Sponsored by Nomura Securities Group)" was renewed until September 30, 2007.
July 2005	The Research Center for Advanced Policy Studies was established.
August 2006	Applied Financial Engineering Division (Sponsored by Nomura Securities Group) was renamed as Applied Financial Engineering Division (Sponsored by Nomura Group).
April 2007	Endowed research division "Educational Economics Division" was established for a time period of until March 31, 2010
October 2007	Endowed research division "Mathematical Finance Division (Nomura Group)" was established for a time period of until September 30, 2010.
March 2008	The earthquake reinforcement of the library annex was completed. This became the new north wing of KIER and was handed over.
August 2008	The Tokyo office (at Marunouchi) was opened in the Tokyo branch as a partnership and communications base concomitant with the implementation of the GCOE (Keio University) program. (for a time period of until January 31, 2012)
September 2008	The Tokyo office (at Mita) was opened in the Tokyo branch as a teaching and research base concomitant with the implementation of the GCOE (Keio University) program. (for a time period of until March 31, 2016)

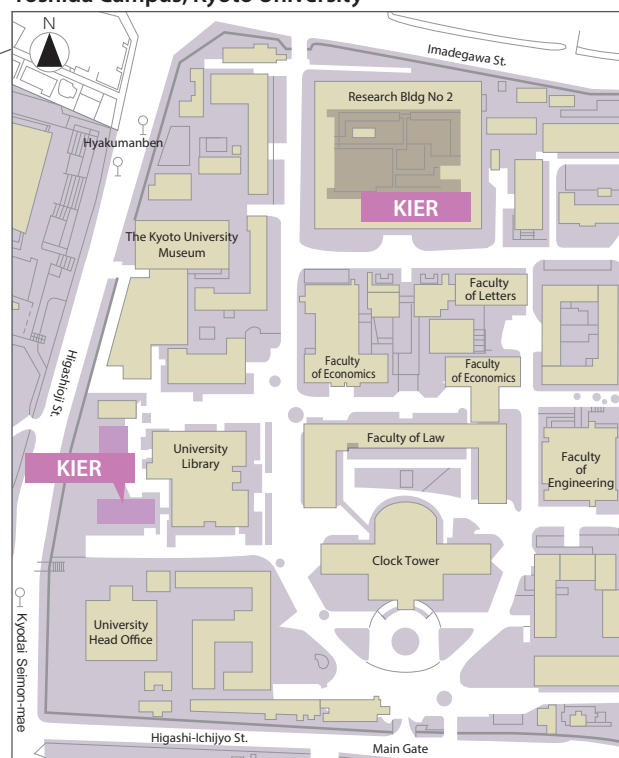
December 2008	816 m ² of the south wing of the 4th floor of the Research Building No. 2 was received by the Institute of Economic Research as a space for research and lectures.
April 2009	The Public Policy Research Division changed its name to the Strategic Economic Studies Division.
April 2010	The Research Center for Financial Engineering was reorganized as the Financial Research Division.
	The Joint Usage/Research Center was certified as an "International Joint Usage/Research Center for Advanced Economic Theory". The new "International Research Unit of Integrated Complex System Science (IRU-ICSS)" is being established as a companion unit. (Scheduled for completion on March 31, 2022.) Further, the Institute of Sustainability Science is also participating.
April 2011	The Research Center for Advanced Policy Studies was established in Research Divisions.
November 2012	A memorial lecture meeting and celebration party were held at Shiran Kaikan on the occasion of the 50th anniversary. A memorial lecture meeting and celebration party were held at Kyoto University Tokyo Office on the occasion of the 50th anniversary.
March 2013	The earthquake reinforcement of the main wing of KIER was completed.
April 2013	The Administration Office (Letters), Main Campus was established for more efficient and integrated administrative processing.
July 2013	The Administration Office (Letters), Main Campus went into full-scale operation following the completion of the office relocation.
April 2014	The new "Social Science Unit for Research and Education" is being established as a companion unit. (Scheduled for completion on March 31, 2025.)
July 2015	KIER participated in the launch of the new "International Research Unit of Advanced Future Studies (IUR-AFS)" and "Unit of Academic Knowledge Integration Studies" (for a time period of until March 31, 2020)
April 2016	The Institute of Sustainability Science transitioned into the Research Unit for Development for Global Sustainability. (for a time period of until March 31, 2020)
March 2019	On-Site Facility for Remote Access to Official Statistical Data was launched with the approval of the National Statistics Center (NSTAC)
April 2020	The following three cooperation units were established: the International Research Unit of Quantum Information, the Data-oriented Area Studies Unit and the Research Unit for Development of Sustainable Society. (the scientific activities of these units are to be completed by March 31, 2025)
November 2022	A memorial lecture meeting and celebration party were held at Shiran Kaikan on the occasion of the 60th anniversary.

Map & Access

Kyoto City Map



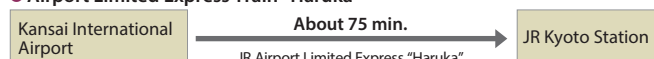
Yoshida Campus, Kyoto University



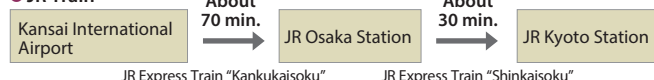
Access to Kyoto Station from Kansai International Airport

1) Train

● Airport Limited Express Train "Haruka"



● JR Train



2) Airport Limousine Bus



Transportation to Kyoto University from JR Kyoto Station

● To take a taxi

The journey will take about 20 minutes

● To take the bus: Kyoto City Bus

The bus ride will take approx. 30-35 minutes
 # 206: bound for Kitaotji Bus Terminal via Higashiyama St.
 # 7: bound for Ginkaku-ji via Kawaramachi St.



<http://www.kier.kyoto-u.ac.jp>

Yoshida-Honmachi, Sakyo-ku, Kyoto 606-8501
 TEL.075-753-7102

