

2018-2019

Overview of Institute of Economic Research
Kyoto University

KIER

2018 -2019 Overview of Institute of Economic Research Kyoto University



KYOTO UNIVERSITY

CONTENTS

Foreword



Satoshi Mizobata, Director
Kyoto Institute of Economic Research

For close to half a century, the Kyoto Institute of Economic Research (KIER) has been a leader in Japan in the sphere of fundamental scientific economics, with a focus on theoretical economics and econometrics. Moreover, the Institute has recently increased its emphasis on research in the sphere of applied scientific aspects of economics, and has gained a strong reputation for its positive progress in policy assessment and policy recommendations.

KIER conducts prominent research in the field of economics at the international level, and our mission is to contribute to the further development of the field. Each member of the Institute aims to be a pioneer at the front lines of international research, and our research team works with the primary goal of leading the field. For instance, in terms of number of research papers published in international journals per researcher and the frequency of their citations in various scholarly publications, KIER, when ranked together with other economic institutes and the Graduate School of Economics (Faculty of Economics), maintains one of the top positions among domestic academic institutions specializing in economics. The Institute has significantly contributed to the development of economic sciences at the international level.

KIER has managed to keep its position as the most prominent center for economic research in Japan from its establishment until today thanks to its pursuit of the so-called American research institution model and its recognition of the necessity of competition that comes with it. KIER was the first institution in Japan to implement reforms under this model. Based on these, Institute researchers began sending their papers to researchers abroad in the form of technical reports, attempting to have them published in international, peer-reviewed scientific journals. Researchers' academic and research achievements would be evaluated by the number of papers published in specialized, peer-reviewed journals and the quality of those papers. KIER would not issue its own academic journal, in order to stimulate publication in peer-review journals. Institute Researchers would not be discouraged from taking long-term research trips overseas. One secretary would be appointed for every two professors. KIER would also actively invite foreign researchers. The basic criteria for employment and promotion policies would be academic and scientific results; the prestige of applicants' previous educational institutions would not matter. This system—oriented on scientific and academic results—was quite a unique one in Japan's economic sciences community of the late 1960s. As we have created and developed our own research-oriented culture, KIER has become a highly honored Mecca of economic theory and econometrics.

Socioeconomic, research, and educational environments are constantly changing, and our Institute is evolving in three major directions. The first is in its contribution to the development of economic sciences through joint research and joint usage projects. In 2010, KIER was approved by the Japanese Ministry of Education, Culture, Sports, Science and Technology (MEXT) as a Joint Usage/Research Center with an emphasis on fundamental research in the sphere of Economics of Complex Systems and Economic Strategy and Organization, under the name "International Joint Research Center of Advanced Economic Theory". The research resources KIER has collected and international research networks it has formed have strengthened its role in the international research community. The second direction is an approach that emphasizes the importance of connecting real economic processes and theoretical research, a stance that has led KIER to contribute to the development of applied scientific studies. The Research Center for Advanced Policy was established in 2005, and is currently in its third term of operation. With the cooperation of the six academic researchers from the central ministries and agencies it has hired for fixed-term appointments, KIER has been raising the level of policy studies and actively proposing policy recommendations. This enhanced interface between theoretical studies and policy implications allows the Institute to contribute to society and to the economy. Particularly, we organized the Database Unit for promoting evidence-based policy. The third direction is in the improvement of KIER's capacity to share information globally. To do so, we actively organize international conferences and contribute towards editing International journals.

KIER also considers education to be an important part of its mission and actively participates in educating graduate school students and young researchers. Professors from our Institute teach at the Graduate School of Economics, and KIER also accepts special researchers from the Japan Society for the Promotion of Science, fixed-term researchers, and others. KIER has earned a positive reputation as a training grounds for researchers, as many young scholars have gone on to become professors at renowned universities after completing their education at our Institute. Moreover, KIER was one of the first to introduce the tenure-track system at Kyoto University and in the field of social sciences. Our Institute maintains an open-door policy towards employment and education of young talented researchers.

The world economic crisis and opaque economic conditions in the aftermath of it pose new challenges to the whole field of economics. Nowadays, when both competitiveness and research capability of the Japanese society are being questioned, there raises a necessity of conducting high-quality research conforming to international standards. I am confident that research spirit of our institute, institutionalized research and educational styles, and our new directions will allow KIER to become a good means in tackling the contemporary problems in the field of economics. KIER has significantly contributed to the development of economic sciences in Japan, both by conducting modern research activities in the sphere of economics, and as a center of education and research for joint usage and joint research projects which attracts many researchers from around the world. KIER will continue its unceasing efforts and strive to maintain its position as a center of development and creation in the sphere of economics.

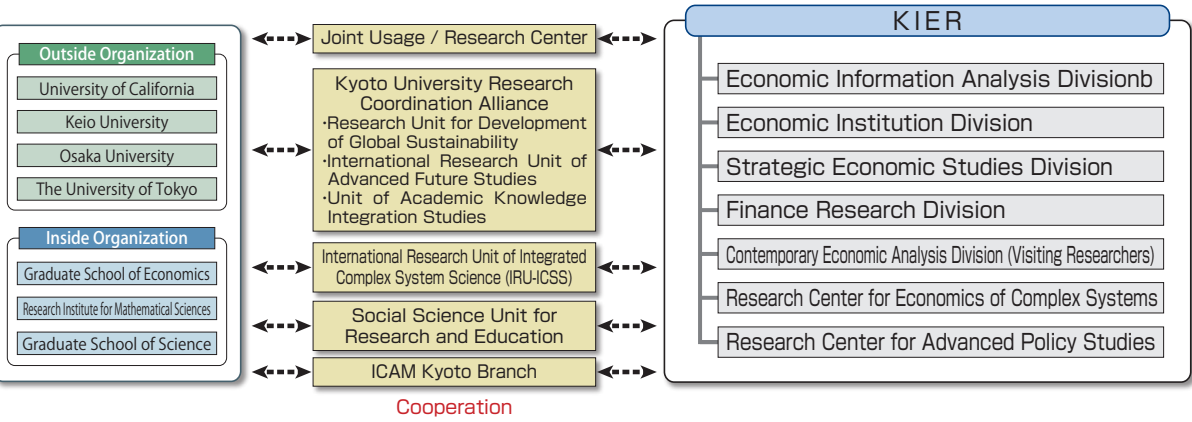
◆2018-2019 Overview of Institute of Economic Research Kyoto University

Foreword.....	01
Organization and Research Staff	02
Actual Staff.....	03
List of Directors.....	03
List of Professors Emeriti	03
Research Divisions and Centers	
Economic Information Analysis Division	04
Economic Institution Division	04
Strategic Economic Studies Division	05
Finance Research Division	05
Research Center for Economics of Complex Systems	06
Research Center for Advanced Policy Studies	06
Contemporary Economic Analysis Division (Visiting Researchers)	07
Joint Usage / Research center	
“International Joint Research Center of Advanced Economic Theory”	07
Kyoto University Research Coordination Alliance	
International Research Unit of Advanced Future Studies	08
Research Unit for Development of Global Sustainability	08
Unit of Academic Knowledge Integration Studies	08
International Research Unit of Integrated Complex System Science (IRU-ICSS)	08
Social Science Unit for Research and Education	08
ICAM Kyoto Branch	09
Social Contribution	09
Track Records	16
Library	18
Finances	19
Chronological Table	20
Map & Access	21



KYOTO UNIVERSITY

Organization and Research Staff



	Research Divisions	Research Areas	Research Staffs	
Director	Economic Information Analysis Division	Macroeconometric Analysis	Professor	Hiroshi TERUYAMA
		Microeconometric Analysis	Professor	Hiroshi OSANO
		Experimental Economics		
	Economic Institution Division	Economic Analysis of Institutions	Professor	Satoshi MIZOBATA
			Professor	Akira OKADA
		Economic Analysis of Organizations	Professor	Chiaki HARA
		International Trade and Economic Growth		
	Strategic Economic Studies Division	Game Theory	Professor	Tadashi SEKIGUCHI
			Assistant Professor	Jonathan NEWTON
			Assistant Professor	Chia-hui CHEN
			Assistant Professor	Hitoshi SADAKANE
		Environment and Public Policy		
		Strategic Market Theory	Professor	Atsushi KAJI
	Finance Research Division	Mathematical Finance		
		Risk Management	Professor	Akihisa SHIBATA
		Financial Econometric Analysis	Professor	Yoshihiko NISHIYAMA
		International Financial Economics (Visiting Researchers)	Professor	Byung-yeon KIM
			Associate Professor	Vasily ANIKIN
	Contemporary Economic Analysis Division (Visiting Researchers)		Professor	Keiji NAGAI
			Associate Professor	Yoko KONISHI
	Research Center for Economics of Complex Systems	Spatial Economics	Professor	Tomoya MORI
		Nonlinear Economic Dynamics	Professor	Tadashi SHIGOKA
		Quantitative Macroeconomics	Associate Professor	Shuhei TAKAHASHI
	Research Center for Advanced Policy Studies		Associate Professor	Daizo KOJIMA
			Associate Professor	Yoshihiro SEKINE
			Associate Professor	Masashi TAKETANI
			Associate Professor	Takashi HATTORI
			Associate Professor	Daisuke NAGAMACHI
	Joint Usage / Research Center "International Joint Research Center of Advanced Economic Theory"		Project Professor	Masahisa FUJITA
			Project Professor	Kazuo NISHIMURA
			Project Professor	Kazuo MINO
	Administration Office Head Satoru YAMAGUCHI	General Affairs Section	Section Head	Masatomi SASAKI
			Specialist Staff	Shinji MATSUYAMA
		Library Section	Section Head	Tomoko MINOBE

(as of October 2018)

Actual Staff

Classification	Professor	Associate Professor	Lecturer	Assistant Professor	Sub-total	Administrative Staff	Total
Research Divisions	11	7		2	20	6	26
Visiting researchers	1	1			2		2
Foreign visiting researchers	1	1			2		2
Other Grant-in-Aid, etc.	3				3		3
Total	16	9		2	27	6	33

(as of October 2018)

List of Directors

Directors	Term
KISHIMOTO, Seijiro	1962. 4. 1 ~ 1966. 3. 31
AOYAMA, Hideo	1966. 4. 1 ~ 1971. 11. 30
BABA, Masao	1971. 12. 1 ~ 1974. 3. 31
MORIGUCHI, Chikashi	1974. 4. 1 ~ 1974. 7. 15
ONOE, Hisao	1974. 7. 16 ~ 1978. 7. 15
YUKIZAWA, Kenzo	1978. 7. 16 ~ 1980. 2. 8
MIYAZAKI, Yoshikazu	1980. 2. 8 ~ 1980. 3. 31
MIYAZAKI, Yoshikazu	1980. 4. 1 ~ 1983. 4. 1
ONOE, Hisao	1983. 4. 2 ~ 1986. 3. 31
BABA, Masao	1986. 4. 1 ~ 1986. 10. 27
KOIKE, Kazuo	1986. 10. 27 ~ 1986. 12. 31
KOIKE, Kazuo	1987. 1. 1 ~ 1988. 3. 31
SUGIMOTO, Syoshichi	1988. 4. 1 ~ 1990. 3. 31
SAWA, Takamitsu	1990. 4. 1 ~ 1994. 3. 31
FUKUCHI, Takao	1994. 4. 1 ~ 1995. 3. 31
SAWA, Takamitsu	1995. 4. 1 ~ 1999. 3. 31
FUJITA, Masahisa	1999. 4. 1 ~ 2001. 3. 31
SAWA, Takamitsu	2001. 4. 1 ~ 2006. 3. 31
NISHIMURA, Kazuo	2006. 4. 1 ~ 2010. 3. 31
YANO, Makoto	2010. 4. 1 ~ 2012. 3. 31
MIZOBATA, Satoshi	2012. 4. 1 ~ 2016. 3. 31
OKADA, Akira	2016. 4. 1 ~ 2016. 12. 31
MIZOBATA, Satoshi	2017. 1. 1 ~

List of Professors Emeriti

Professor Emeriti	Date of the title conferred
KISHIMOTO, Seijiro	1966. 4. 2
AOYAMA, Hideo	1973. 4. 2
ONOE, Hisao	1986. 4. 1
MIYAZAKI, Yoshikazu	1990. 1. 23
SEO, Fumiko	1993. 4. 1
SUGIMOTO, Syoshichi	1996. 4. 1
MORIGUCHI, Chikashi	1997. 3. 4
FUKUCHI, Takao	1997. 3. 4
AOKI, Masahiko	2001. 3. 6
SAWA, Takamitsu	2006. 4. 1
UEHARA, Kazuyoshi	2007. 4. 1
SAKAI, Akio	2007. 4. 1
FUJITA, Masahisa	2007. 4. 1
TUKATANI, Tuneo	2008. 4. 1
NISHIMURA, Kazuo	2010. 4. 1
WAKASUGI, Ryuhei	2012. 4. 1
IMAI, Haruo	2015. 4. 1
MINO, Kazuo	2015. 4. 1
ARIGA, Kenn	2016. 4. 1
YANO, Makoto	2018. 4. 1

Research Divisions and Centers

Economic Information Analysis Division

This division, comprehensively viewing the theory and application of econometric analysis and experimental economics as economic information analysis, aims to contribute to the development of the research field. The division comprises three research sections: “macroeconometric research”, “microeconometric research”, and “experimental economics research”. The objectives of the division are described below.

The field of empirical economic research that, by using quantitative data to identify and statistically analyze economic activity, tries to elucidate behavioral principles of economic agents and economic laws of motion has been exhibiting new developments in recent years. Since developments in computer technology have enabled the efficient statistical calculations of large amounts of data, the field of microeconometrics, which analyzes microeconomic data related to households and firms based on the behavioral principles of economic agents, is also developing. For this reason, in the field of econometrics, remarkable progress is being observed in the development of analysis methods for panel data, which comprises time-series and cross-sectional information, and qualitative data that cannot be expressed in quantitative form. Further, efforts at creating panel data by means of questionnaire surveys, etc., will grow even more important in the future. The objective of “microeconometric research section” is to contribute to the development of microeconometrics by fusing econometric theory with the applied microeconomic areas such as the labor economics, corporate finance, and industrial organization.

At the same time, the analysis of macroeconomic data using time-series analysis techniques and computer-based numerical simulation techniques forms the core of the empirical analysis used in modern macroeconomics. The objective of “macroeconometric research section” is, in order to realize the further development of these cutting-edge fields of macroeconometrics, to promote the coordination of econometric theory centering on time-series analysis techniques, economic model analysis techniques based on numerical calculation (computational economics), and the theoretical and empirical analysis in macroeconomics.

There have also, in recent years, been remarkable advances in the experimental methods used in economics. The objective of “experimental economics research section” is to develop the analysis of economic phenomena using economic experiments, statistical techniques for analyzing the experimental results, and behavioral economics.

Economic Institution Division

In this division, we study the emergence and evolution of social and economic organizations, institutions, and conventions. We are particularly interested in social and economic institutions, corporate organizations, and social decision-making processes. We pursue our research agenda under the following two headings.

Under the “economic analysis of institutions” heading, we compare economic institutions based on the empirical and theoretical analysis of the market system and various other institutions. We also attempt to assess the emergence and evolution of such systems by incorporating techniques and insights developed in sociology.

Under the “economic analysis of organizations” heading, we study the inner structure of organizations and the relationships between them. We apply game theory to deal not only with corporate organizations but also with legislative bodies and other types of organizations. We empirically assess our findings and compare them with results in law, management, biology, and other related fields.



Strategic Economic Studies Division

This division bases its studies on the economic agents’ strategic behavior, which plays an important role in advanced economic theory, and aims to promote and disseminate state-of-the-art theoretical research and its applications to various contexts. Established in 2009, this division also inherits the research program of the former Public Policy Division and undertakes research which connects the results of theoretical analysis to policy planning. In order to conduct strategic analysis of the economy from perspectives such as theory, application, and policy implications, this division is further divided into two areas. One is “market economic strategy” and studies the economic phenomena from different angles in order to lay the foundations of policy analysis, based on strategic transactional relationships in the market, which is the fundamental economic institution. The other area is “game theory” and comprehensively studies the individual and group-level decision-making under settings with dynamics, imperfect information, and so on.

In “market economic strategy”, the subject of research is broad aspects of the market economy. The area analyzes strategic behavior of the economic agents such as firms, consumers, and governments, scrutinizes methods for appraisal of market performance, and evaluates economic effects of diverse policies. The area also studies decision theory under risk and uncertainty, which is central to decision-making by participants in the market.

In “game theory”, this area further develops the methodology of game theory that is at the core of the strategic analysis of the economy, through incorporating cutting-edge issues such as dynamics, imperfect information, and incomplete information. The subject of research includes theory of cooperation under long-run relationships with general information structure, analysis of individual and collective decision-making that highlights the role of learning and evolution, the problems of signaling and screening under dynamic environments, and the function of strategic information transmission under various information structure. The area also covers applications of those results to the behaviors of firms and organizations.

Finance Research Division

Investors and business people are required to discern the uncertainty existing within companies and the market and accurately pursue profitability within them with regard to the increasingly chaotic current economy. Although it is critical to understand future uncertainties and to identify and measure the various risks and to decisively optimize risk management, it is Financial Engineering and Finance that provide the foundation regarding them. With this in mind, it is evident that Financial Engineering and Finance are fields of great importance. The Kyoto Institute of Economic Research established the Research Center for Financial Engineering in 2000 and it has played a role as an international hub in the field for 10 years. In order to expand the functions of the center as a base for Financial Engineering and finance research and education which were established through 10 years of its activity, the center was reorganized to become “Finance Research Division” in April 2010.

The Finance Research Division aims to examine, in the light of the current global financial crisis, the optimal risk management in financial markets and the roles of infrastructure, institutions, convention and ethics to improve the financial market quality as well as behavioral finance theory in order to contend with a wider range of problems at higher levels than ever before. In addition, it seeks to analyze the factors involved in the financial crises as well as the measures needed to prevent their re-occurrence. Moreover, placing importance on risk management in organizations, the Division has established the following areas as its research fields: “Risk Management”, “Market Quality”, “Mathematical Finance”, “Financial Econometrics Analysis” and “International Financial Economics”. The Division will continue to study measures to revitalize the economy and measures to deal with risks facing the Japanese economy in the future, while cooperating closely with other Divisions at the Kyoto Institute of Economic Research.

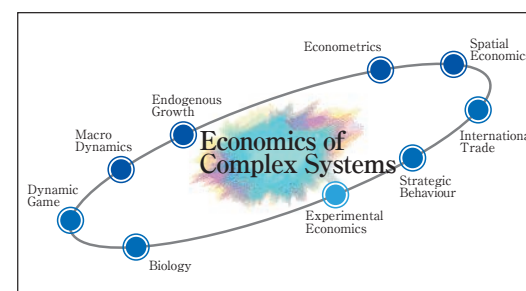


Research Center for Economics of Complex Systems

The application of the science of complex systems to economics advanced greatly in the 1990s. Within this discipline, KIER has achieved great success in the fields of nonlinear economic dynamics and spatial economics. Between 1997 and 2003, we received Grants-in-Aid for Scientific Research toward the formation of a center for the economics of complex systems. During this period, we held multiple interdisciplinary and international conferences, and through joint research with many overseas scholars, we achieved significant results as an international center in this field. The purpose of the establishment of this center is to ensure a permanent research base for the economics of complex systems.

The Research Center for Economics of Complex Systems focuses on the study of “economics of complex systems” as a central research theme, together with “spatial economics” and “economic dynamics”. The objective of the “economics of complex systems” is to elucidate, in a unified way, strategic interdependent relationships, spatiotemporal pattern formations, and macroeconomic fluctuation phenomena. In order to explain cyclical economic phenomena involving many agents, research on interdependence and self-organization is conducted to reconsider the hypotheses of the behavioral patterns of economic agents applied in traditional economics. For example, results that deal with the relationship between multi-sector economies and multiple equilibria and with high-dimensional chaos can be expected. “Spatial economics” studies the mechanisms of economic agglomerations such as industrial clustering, city formation, and transport network formation, whose spatial patterns often provide typical examples of self-organization leading to the emergence of order.

“Economic dynamics” develops formal methodologies used in nonlinear dynamic analysis based on the standard spatiotemporal framework, and constructs a mathematical foundation common to all the research areas of this center.



Research Center for Advanced Policy Studies

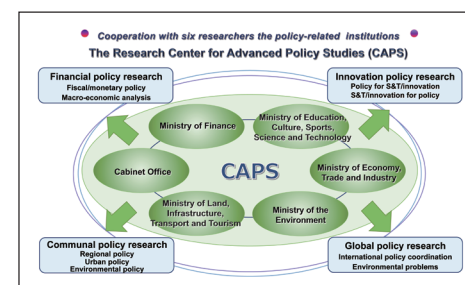
The Research Center for Advanced Policy Studies (CAPS) was established in July 2005 as part of KIER to promote the joint research activities by fixed-term researchers appointed from central government offices, who mainly conduct practical policy research, and tenured KIER researchers, who mainly conduct theoretical research. This center handles three research areas: financial policies (fiscal and monetary policies), global policies (interdependence of international policies), and communal policies (environmental, medical, and urban issues). These three policy research areas are closely related, and their combined objective is the multifaceted analysis of policies based on the needs of the times. Particularly, the center has pushed forward toward evidence-based policy making, organizing the interdisciplinary studies by cooperating with natural sciences organizations.

CAPS comprises six professors with fixed term appointment, hereinafter referred to as non-tenured professors, and two tenured professors (the center director and vice-director; KIER position held concurrently) responsible for the operation of the center. Non-tenured professors are dispatched from government departments (Cabinet Office, Ministry of Finance, Ministry of Economy, Trade and Industry, Ministry of the Environment and Ministry of Land, Infrastructure, Transport and Tourism, Ministry of Education, Culture, Sports, Science and Technology). From 2017, the center organized steering committee by cooperating with Kyoto University as a whole.

By investigating the efficacy of the techniques and theory pertaining to advanced economic analysis, which is KIER's main research area, and quickly and precisely linking the results of advanced economic research to policy analysis, the center reflects the fruits of its research in actual economic policies. Its objective is to promote interaction that overcomes the barriers between governmental, private and academic institutions, as well as between government departments, to realize a reciprocal flow of human resources between the policy-related institutions and the academic world, and to foster both theoretical and empirical policy research.

The center was established based on an awareness of the fact that the cultivation of policy makers with superior skills of bargaining and persuasion, supported by specialized knowledge, and the formation of policies that can attain a high level of approval from the international community is important for the Japanese government. In order to achieve the improvement in Japanese policy analysis required for this, it is essential that the practice of compartmentalized policy formulation and analysis is abolished and that two-way flow of human resources and ideas is promoted between the policy-related institutions and the academic world. The center thus plays an important role in continually providing a place for such interaction and supporting free and vigorous exchange.

Also, reflecting the fruits of the research performed by KIER, which centers on theoretical study, in Japan's economic policies represents an important opportunity to demonstrate the efficacy of theoretical economic research. At the same time, effectively identifying the practical needs of actual policies is indispensable if theoretical economic research is to maintain a sense of reality. Joint research conducted with staff at the center will allow full-time KIER researchers to understand accurately latest policy-related research needs, and to conduct theoretical and empirical research that meets these needs.



Contemporary Economic Analysis Division (Visiting Research Division)

This division was established to accept outstanding researchers from outside the university as visiting professors, and thereby attain powerful support for research. Its studies center on the theoretical and empirical research of the current problems of the Japanese economy. The topics of these studies change every year.

Joint Usage / Research Center “International Joint Research Center of Advanced Economic Theory”

KIER has worked extensively to further joint research with researchers both in and outside Japan, as an international hub for researching advanced economic theory. In view of its activity in this area, KIER received MEXT approval in FY2010 as the Joint Usage / Research Center under the name International Joint Research Center of advanced economic theory, based on the medium-term objective of furthering research in two fields of advanced economic theory: economics of complex systems and economic strategy and organization. In FY2016, KIER was again accredited as the Joint Usage/Research Center by MEXT.

The center uses the abundant human resources and facilities at KIER and the international research networks that have been cultivated to date as research resources to further international joint research into advanced economic theory, and is working to train researchers involved in economic theory research internationally. The center is managed by the Joint Research / Usage Center's Advisory Committee, comprising ten members-five members from within KIER and five extramural members representing the researcher community.

Open project research is positioned at the heart of the center's operations. This work uses KIER's research resources regarding themes identified as important in economics, organizing research groups represented by researchers outside KIER to publicly solicit and implement intensive joint research over the course one year. Many unique research results can be expected to arise through the implementation of these projects.

In consideration of the scope of the specialist research, investigation of these open projects is implemented by the Research Project Selection Committee comprising five members from within KIER and five external members, and the Advisory Committee decides whether to take up the project based on the results of this investigation. For FY2018, the following 15 projects general research projects included-were adapted, taking “economic analysis of population problems” as the core them of the research project (i.e., the main research them).

Titles of the FY2018 Project Research Themes	
Main Research Themes	Researcher Names and Affiliations
Health Examination under Uncertainty: Probability Updating with Irrational Utility functions and its Policy Implications	Masako Ii : School of International and Public Policy, Hitotsubashi University
Population and Economic Growth	Tomoya Sakagami : Kumamoto-Gakuen University
Microdata and DSGE Analysis of Fiscal Policy Effects on the Japanese Economy under a Falling Birthrate and an Aging Population, Taking into Consideration Inter-generational Heterogeneity	Real ARAI : School of Economics and Management, Kochi University of Technology
General Research Themes	Researcher Names and Affiliations
Uncertainty and Economic Growth	Kizuku Takao : Department of Economics, Aomori Public University
Experiments on Repeated Games with Imperfect Monitoring under Multimarket Contact	Hajime Kobayashi : Faculty of Economics, Kansai University
A study on financial systemic risks under model uncertainty and rational inattention	Yuan Tian : Faculty of Economics, Ryukoku University
A Theory of Subjective Learning and its Extension	Norio Takeoka: Graduate School of Economics, Hitotsubashi University
International Political Economy of Chinese and Russian Multinationals	Takuma Kobayashi : Faculty of Economics, Matsuyama University
International Comparison on the Relationship between State and Civil Society in Post-Transition Economies	Yokogawa, Kazuho : Faculty of Economics, Kanagawa University
Empirical analysis on the relation between financial constraint and firm dynamics based on micro-data	Koji Kato : Faculty of Business Administration, Meiji University
Factor adjustments and liquidity managements: Evidence from the Japanese lost two decades	Hirokazu Mizobata : Faculty of Economics, Kansai University
Development of theoretical and empirical frameworks for many-dimensional nonlinear spatial economic models	Miwa Matsuo : Research Institute for Economics and Business Administration, Kobe University
The Economics of Organization and Communication	Keizo Mizuno : School of Business Administration, Kwansei Gakuin University
Empirical studies on the formation of economic regions using Japanese intra-national trade data	Jens Wrona : Düsseldorf Institute of Competition Economics, Heinrich-Heine-University Düsseldorf
Asymptotic theory of sequential tests and estimation for unit root processes	Keiji Nagai : International Social Sciences, Yokohama National University

Further, the Center is internationally minded in its sharing of information on advanced economic theory, actively hosting international conferences and symposiums on advanced economic theory research in concert with the project research. The Center's activities and information sharing is supported by the Joint Usage/Research Center's Support Office.

Kyoto University Research Coordination Alliance

Kyoto University Research Coordination Alliance is mainly composed of Institutes and Centers of Kyoto University. It strengthens the coordination through publication of information including study results, joint operation and procurement of large-scale equipment, appropriate and unified management of internal sources and their focused distribution to common issues. It also deals with the reinforcement and globalization of the research power of the University, including the graduate schools and faculties, by supporting the efforts for creation of new areas through fusion of different areas of study.

Research Units for Exploring Future Horizons represent one of important activities of the Research Coordination Alliance, and function to try bottom-up creation of new academic areas based on varied academic areas of Institutes and Centers. Four research units (International Research Unit of Advanced Future Studies, Human & Nature Interlaced Life Science, Research Unit for Development of Global Sustainability, and Unit of Academic Knowledge Integration Studies) are established. Kyoto Institute of Economic Research participate in the following three units.

International Research Unit of Advanced Future Studies (IRU-AFS)

The International Research Unit of Advanced Future Studies was established on July 28, 2015 in collaboration of 12 (now 15) Kyoto University research organizations based on the New Integrated Creative Sciences Project (NICS Project) research activities (FY 2013-2014), and is operated by the Yukawa Institute for Theoretical Physics (YITP).

Its vision is to drive intellectual adventures of multi-discipline integration for paradigm shifts in exploration of universal laws and emerging principles governing the living organisms, materials, mind, human societies, education and economics, and to guide our future. IRU-AFS leverages its international research networks with many global guest faculties to promote its original research in collaboration with the International Research Unit of Integrated Complex System Science (IRU-ICSS) and the Unit of Synergetic Studies for Space (USSS). The Unit Leader is Mr. Shinya Aoki (Yukawa Institute for Theoretical Physics).



Research Unit for Development of Global Sustainability

The Research Unit for Development of Global Sustainability was launched in June 2015, replacing the Institute of Sustainability Science (ISS) which had conducted interdisciplinary researches on sustainability since its establishment in 2006.

The Unit designs sustainability-building strategies based on the results of interdisciplinary cooperation among scientists who conduct cutting-edge researches in fields of the natural environment, human society, life as well as issues related to the participating seven Research Institutes. These scientists clarify, in each of their fields, which factors determine life span of systems they deal with, and present their results on life span from the viewpoint of relative evaluation (assessment of the vulnerability of the natural environment and matters on a time scale of human beings). The Unit's approach clearly differs from past approaches that solely aimed at constant growth in limited areas: our strategies are dynamic and global, recognizing the fact that the basis of human species for existence do not remain unchanged forever.

KIER continues to participate in the Unit following the ISS, from an economics and policy research perspective. The Unit Leader is Mr. Sumio Matsuura (Professor of Disaster Prevention Research Institute).



Unit of Academic Knowledge Integration Studies

This unit aims at the innovative development of interdisciplinary studies through the construction of a database of academic big data adapted to the cloud environment that utilizes big data from humanities, social sciences and natural sciences. This unit develops advanced research on digital humanities in the boundaries of the research areas of informatics, humanities and social sciences.

Specifically, this unit engages in the construction of a database of big data through linking the information about academic materials which have been separately accumulated in the Libraries and the Museum of Kyoto University. Kyoto University academic data will be integrated with the enormous quantity of data on the Web provided by the Semantic Web Technology.

Interdisciplinary studies deal with various issues concerning the human security.

This unit's initiatives will allow to efficiently search for relevant papers, historical materials, statistical data, and observation data from databases of academic big data by utilizing the semantic technology. This unit's initiatives will also attempt to clarify the present situation of academic big data organization, altogether with the proposition of policies and future forecasts by means of analysis based on visualization, machine learning and simulations. Unit Leader: Shoichiro Hara (Professor of Center for Southeast Asian Studies).



International Research Unit of Integrated Complex System Science (IRU-ICSS)

Kyoto University is proud of its abundant human resources as well as outstanding research results in the wide-ranging research fields from micro elements to macro human social economic phenomena. In order to draw out human resources that can develop further research and solve the increasingly complex and diverse problems of the future, the "International Research Unit of Integrated Complex System Science" ("The Unit"), which unifies across divisions by planning international alliances based on the common research theme of "complex systems", was established on 1 April 2010, and its offices are located in the Kyoto Institute of Economic Research (KIER).

Social Science Unit for Research and Education

Japan has been facing deflationary pressures and stagnant economic growth for more than 20 years. To overcome these difficulties, we need to enhance the market quality and connect science and technology to affluence. In this light, it is imperative to cultivate socio-scientific talents capable of handling ever-increasing data and creating a new education and research system designed for developing seeds based on needs.

This project intends to help promote an evidence-based society in collaboration with medical schools and other natural science departments as well as humanities and social science graduate schools and research institutions in our university. It aims to establish new humanities and social sciences based on quantitative data, cultivate talents in most advanced areas of study, and create evidence-based interdisciplinary human sciences that elucidate human nature and society.

Placing the policy studies by the Research Center for Advanced Policy Studies (CAPS) instructors at its core, we collaborate with departments that comprise the unit and with data-building hubs on and off campus in creating panel data and big data that capture personal traits and social structures in fields ranging from social science to life science. Utilizing the data, our project pursues research on determinants of social phenomena, human activities, and health from innovative perspectives not found in existing research.

In academic year 2016, we will recruit graduate students who are interested in evidence-based human science from the departments that comprise the unit. These students will deepen understanding of evidence-based human science and become ambassadors of evidence-based human science in their respective research fields. They will also engage in research and education with CAPS instructors as student partners, e.g. as research and teaching assistants. Professor Yoshihiko Nishiyama (KIER) served as the head of the unit.

ICAM Kyoto Branch

ICAM is a research center for complex systems founded in July 2002 by Professor David Pines of the Santa Fe Institute as part of the University of California. In July 2005, together with Division of Physics I of the Graduate School of Science, KIER established a Kyoto branch of ICAM, and started to participate in its activities. Project Professor Kazuo Nishimura of KIER serves as representatives of the ICAM Kyoto Branch.



Social Contribution

◆ Symposiums and Seminars

Lectures and symposiums for adults and students are held periodically, and themes centering on the introduction of economic frontiers and explanations of economic problems that are of great social concern are raised. The economic research symposiums that are hosted every year have recently raised such themes as the "Information Society and Economics", "Management of the Creation of Evolving Values", and "Simplified Advanced Policy Analysis".

Further, economic education activities are also pursued via the economic teaching symposium "Specially-Founded Academy for Referencing Advanced Finance and Economics", and invitations to junior high and high school students to attend public lectures as the audience.

Number of Previous Workshops and Symposiums

Fiscal Year	2013	2014	2015	2016	2017
Total Number	19(13)	19(9)	16(9)	15(8)	19(9)

Note: Figures in parentheses show the number of international symposiums within the total number.

Number of Previous Workshops

FY	2013	2014	2015	2016	2017
Microeconomics and Game Theory Workshop	28	34	37	39	40
Econometrics Workshop	12	6	11	12	9
KIER Workshop	2	2	3	5	4
Contract Theory Workshop	2	2	1	3	1
Urban Economics Workshop	11	10	11	7	9
CAPS Workshop	5	7	13	12	5
Macroeconomics and Economic Systems Workshop	14	19	19	30	26
Joint Usage / Research Center Workshop	6	11	10	3	8
Specially Promoted Research Workshop	6	14	17	—	—
Others	0	4	5	10	3
Total Number	86	109	127	121	105

Main Symposiums Hosted or Jointly Hosted by KIER (28 January 2012 to 21 March 2018)

Date	Title	Guest Speakers	Venue
2012/1/28~2012/1/29	Workshop on Globalization, Innovation and Firm Productivity in Japan, Korea and the Beyond	Jungsoo Park (Sogang University, Korea) Sanghoon Ahn (KDI / Korea Development Institute, Korea) Jung Hur (Sogang University, Korea) Yasuyuki Todo (the University of Tokyo) Daisuke Miyazawa (Development Bank of Japan) Toshiyuki Matsuura (Keio University) Keun Lee (Seoul National University, Korea) Byung-Yeon Kim (Seoul National University, Korea)	Kyoto University Clock Tower Centenniale Holl
2012/3/16~2012/3/17	International Conference on Applied Microeconomics and Development Economics	Rajshri Jayaraman (European School of Management and Technology, Germany) Hitoshi Matsushima (the University of Tokyo) Dilip Mookherjee (Boston University, USA) Debraj Ray (New York University, USA) Koichi Takase (Waseda University) Ryuichi Tanaka (National Graduate Institute for Policy Studies) Masatoshi Tsumagami (Keio Univesity) Kaoru Ueda (Nanzan University)	Research Building #2, Kyoto University
2012/3/17~2012/3/18	Trans-Pacific Labor Seminar 2012	Hank Farber (Princeton University, USA) Takao Kato (Colgate University, USA) Richard Freeman (Harvard University, USA) Daiji Kawaguchi (Hitotsubashi University) Lisa Kahn (Yale University, USA) Hiroshi Ono (Texas A&M University, USA) Kenta Hayashi (Kyoto University) Isamu Yamamoto (Keio University) Peter Kuhn (University of California, Santa Barbara, USA) Masaru Sasaki (Osaka University) Giorgio Brunello (University of Padua, Italy) Lindsay Oldenski (Georgetown University, USA) Hodaka Morita (University of New South Wales, Australia)	Doshisha University, Kyoto
2012/4/5	Workshop on Microeconomics/Game Theory	Julio Davila (CORE-UcLouvain, Belgium, Paris School of Economics, France)	Institute of Economic Research, Kyoto University
2012/5/11	Workshop on Macroeconomics and Economic Systems	Enrico D'Ambrogio (The European Parliament)	Institute of Economic Research, Kyoto University
2012/7/31~2012/8/1	GCOE Program Seminar "Trade and Development"	Kensuke Teshima (Instituto Tecnológico Autónomo de México (ITAM), Mexico)	Institute of Economic Research, Kyoto University
2012/8/23	KIER Workshop	Johannes Horner (Yale University, USA)	Research Building #2, Kyoto University
2012/10/4	Market Quality Workshop	Kenji Sato (Kyoto University) Yuka Ohno (Hokkaido University) Avinash Dixit (Princeton University, USA)	Research Building #2, Kyoto University
2012/10/19	Symposium on Santa Fe Institute in Kyoto "Invitation to Integrated Complex System Science"	Jerry Sabloff (Santa Fe Institute, USA) Fumio Oka (Kyoto University) Hiroshi Watanabe (Kyoto University) tetsuo Kobayashi (Kyoto University) Atsushi Yamauchi (Kyoto University) Terufumi Ohno (Kyoto University) Kazuo Mino (Kyoto University)	Science Seminar House, Kyoto University
2012/11/2	In Celebration of the 50th Anniversary of the Kyoto University Institute of Economic Research (KIER) Conference on Market Quality	Youngsub Chun (Seoul National University, Korea) Takashi Komatsubara (Kyoto University) Tadashi Sekiguchi (Kyoto University) Satoshi Mizobata (Kyoto University) Andrei Yakovlev (National Research University, Russia) Byung-YeonKim (Seoul National University, Korea)	The Westin Miyako Kyoto
2012/11/15~2012/11/16	Kyoto Conference on EMPLOYMENT ADJUSTMENT IN RESPONSE TO SHOCKS: MICRO-LEVEL EVIDENCE & MACRO-ECONOMIC IMPLICATIONS	Richard Upward (the University of Nottingham, UK) Ryo Kambayashi (Hitotsubashi University) Daniela Nordmeier (Nuremberg & Friedrich-Alexander-University, Erlangen-Nuremberg, Germany) Tor Eriksson (Aarhus University, Denmark) Leopoldo Mondauto (Italia Lavoro, Italy) Héloise Petit (CEE and University of Paris I Panthéon-Sorbonne, France) Richard Fabling (Motu Economic & Public Policy Research, New Zealand) Jim Spletzer (U.S. Census Bureau, USA) Robert Petrunia (Lakehead University, Canada)	Kyoto University Clock Tower Centenniale Holl

Date	Title	Guest Speakers	Venue
2012/12/12~2012/12/13	Yokohama Conference on Empirical Issues of International Trade and Firms	Lee Branstetter (Carnegie Mellon University / Former Senior Economist of International Trade and Investment, USA) Lu Yi (National University of Singapore, Singapore) Miaojie Yu (Peking University, China) Heiwai Tang (Tufts University, USA) Eiichi Tomiura (Yokohama National University) Tzu-Han Yang (National Taipei University, Taiwan) Andrew Bernard (Dartmouth College, USA) Loretta Fung (National Tsing Hua University, Taiwan) Shuichiro Nishioka (West Virginia University, USA) Hong Ma (Tsinghua University, China) Kozo Kiyota (Yokohama National University) Deng-Shing Huang (Academia Sinica, Taiwan)	The Conference Center, Pacifico Yokohama
2013/1/26~2013/1/27	International Conference "System Transformation and Labour Motivation Problems"	Irina Olympieva (Center for Independent Social Research, Russia) Geoffrey Wood (The University of Warwick, UK) Takumi Horibayashi (Kanazawa University) Igor Gurkov (National Research University - Higher School of Economics, Russia) Vasily Anikin (National Research University - Higher School of Economics, Russia) Sadayoshi Ohtsu (Kobe University) Hiroaki Hayashi (University of Shimane) Katsumi Fujiwara (Osaka University) Yanxia Tang (Aichi University) Yutaka Konoshi (Gifu University) Satoshi Mizobata (Kyoto University) Fumitaka Iwanami (Komazawa University)	Shiran Kaikan Annex, Kyoto University (26th) Institute of Economic Research, Kyoto University (27th)
2013/2/9	International Workshop on The Economic and Mathematical Analysis of Security Markets	Robert Anderson (University of California, Berkeley, USA) Katsumasa Nishide (Yokohama National University) Rose-Anne Dana (Université Paris-Dauphine, France) Shuji Funahashi (Mizuho Securities Co. Ltd. / Tokyo Metropolitan University) Takashi Kato (Osaka University) Masaaki Fukasawa (Osaka University) Norio Takeoka (Yokohama National University)	Institute of Economic Research, Kyoto University
2013/3/14~2013/3/17	10th Biennial Pacific Rim Conference, Western Economic Association International	Robert F. Engle (New York University, USA) Atsushi Seike (Keio University) George G. Kaufman (Loyola University Chicago, USA) Takatoshi Ito (The University of Tokyo)	Keio University
2013/4/8~2013/4/9	International Conference on Market Quality, Trade and Dynamics	Ronald Jones (University of Rochester, USA) Naoyuki Yoshino (Keio University) Nicholas Yannelis (University of Iowa and University of Manchester, UK) Takashi Kamihigashi (Kobe University) Andy Neumeyer (Universidad Torcuato di Tella, Argentine) Yuichi Furukawa (Chukyo University) Krishnendu Dastidar (Jawaharlal Nehru University, India) Hitoshi Matsushima (The University of Tokyo) Takakazu Honryo (University of Mannheim, Germany) Peter Rosendorff (New York University, USA) Mukul Majumdar (Cornell University, USA)	The Westin Miyako Kyoto
2013/4/28	Science Education in Kyoto -The Grobal Partnership on Science Education Through Engagement in Kyoto-	Yoshiharu Hoshino (Teikyo University) Yasuo Sando (Nippon Steel & Sumikin Research Institute Corporation) Hiroshi Asada (Kyoto Municipal Katsuragawa Elementary School) Yuji Takahata (Nerima Munisipal Kaishin The First Junior High School) Isao Iizawa (Kyoto Municipal Horikawa Senior High School) Toshiharu Tsushima (Fukushima Prefectural Adachi High School) Osamu Marukawa (Kyoto Prefectural Board of Education) Hidefumi Tooyama (Kyoto Prefectural Board of Education) Kazuo Nishimura (Kyoto University)	Panasonic Auditorium, Yukawa Memorial Hall, Kyoto University

Date	Title	Guest Speakers	Venue
2013/11/8~2013/11/9	International Conference on Market Quality and Economic Institutions	Makoto Yano (Kyoto University) Takashi Komatsubara (Kyoto University) Shin Sakaue (Sophia University) Hidetaka Kawano (Aomori Public University) Jinwoo Kim (Seoul National University, Korea) Jun Tomitaka (Aomori Public University) Krishnendu Dastidar (Jawaharlal Nehru University, India)	WA-RASSE (8th) Aomori Public University (9th)
2013/11/9	Joint-Usage, Joint-Research Program Workshop on Social Infrastructure Design in Post-Earthquake	Takayuki Oishi (Aomori Public University) Shino Takayama (The University of Queensland, Australia) Andy McLennan (The University of Queensland, Australia) Youngsub Chun (Seoul National University, Korea) Yoshinori Kon (Aomori Public Univeristy)	Aomori Public University
2013/12/3	Institutions, Markets, and Market Quality -IEFS Japan Annual Meeting 2013-	Makoto Yano (Kyoto University) Shuhei Takahashi (Kyoto University) Taiji Furusawa (Hitotsubashi Univeristy) Takashi Kamihigashi (Kobe University) Kenji Fujiwara (Kwansei Gakuin University) Hu Yunfang (Tohoku University) Krishnendu Dastidar (Jawaharlal Nehru University, India) Toshihiro Matsumura (The University of Tokyo)	Rokkodai Main Building, Kobe University
2013/12/14~2013/12/15	International Conference "International Comparison on Variety of Capitalism and Work Motivation"	Hironori Tohyama (Shizuoka University) Hitomi Matsubara (Osaka City University) Mihoko Satogami (Kyoto University) Satoshi Mizobata (Kyoto University) Ryoji Ihara (Gifu University) Shoji Hashiguchi (Ritsumeikan University) Katsumi Fujiwara (Osaka University) Hiroaki Hayashi (University of Shimane) Simon Clarke (University of Warwick, UK) Geoffrey Wood (University of Warwick, UK) Pavol Babos (Slovak Academy of Sciences, Slovakia) Ngoc Anh Nguyen (National Economic University, Vietnam) Richard Deeg (Temple University, USA)	Kyoto University Clock Tower Centenniale Holl
2014/2/18	SSK International Workshop in Kyoto	Kyunchul Song (University of British Columbia, Canada) Ryo Okui (Kyoto University) Naoya Sueishi (Kyoto University) Sokbae Lee (Seoul National University, Korea) Se-il Mun (Kyoto University)	The Westin Miyako Kyoto
2014/2/27	AEI-Five Joint Workshop on Economic Issues in the Asian Century	Keun Lee (Seoul National University, Korea) Yoshihiko Nishiyama (Kyoto University) Jianguo Xu (Peking University, China) Jae-Young Kim (Seoul National University, Korea) Pei-Ju Liao (Academia Sinica, Taiwan) Tianyang Xi (Peking University, China) Xiaobo Zhang (Peking University, China) Eric Fesselmeyer (National University of Singapore, Singapore) Kamhon Kan (Academia Sinica, Taiwan)	The Westin Miyako Kyoto
2014/2/28	Workshop on Growth and Economic Policies	Kazuo Mino (Kyoto University) Been-Lon Chen (Academia Sinica, Taiwan) Juin-Jen Chang (Academia Sinica, Taiwan) Miaojie Yu (Peking University, China) Oyvind Thomassen (Seoul National University, Korea) Min Wang (Peking University, China) Tadashi Sekiguchi (Kyoto University) Zhu Shenghao (National University of Singapore, Singapore) Youngsub Chun (Seoul National University, Korea)	The Westin Miyako Kyoto
2014/3/5~2014/3/6	International Seminar "Variety of Capitalism in Transition Countries and Work Motivation"	Kazuho Yokogawa (Kanagwa University) Makoto Kumazawa (Konan University) Jan Hagamejer (Warsaw University, Poland) Joanna Tyrowicz (Warsaw University, Poland) John Round (National Research University-Higher School of Economics, Russia)	Shiran Kaikan Annex, Kyoto University

Date	Title	Guest Speakers	Venue
2014/3/28~2014/3/29	International Conference on Portfolio Selection and Asset Pricing	Giorgia Callegaro (University of Padova, Italy) Darrell Duffie (Stanford University, USA) Masahiko Egami (Kyoto University) Toshiki Honda (Hitotsubashi University) Yuri Kabanov (University of Franche-Comte, France) Shigeo Kusuoka (The University of Tokyo) Hiroshi Morita (Yokohama National University) Rohit Rahi (London School of Economics, UK) Jun Sekine (Osaka University) Jaeyoung Sung (Ajou University, Korea) Xun Yu Zhou (University of Oxford, UK)	Kyoto University Clock Tower Centenniale Holl
2014/7/19~2014/7/19	International Conference on "Comparative Analysis of Business and Management"	Yoji Koyama (Niigata University) Norio Horie (University of Toyama) David Stark (Columbia University, USA) Takabumi Hayashi (Kokushikan University) Naoki Wakabayashi (Kyoto University) Fazakas Balazs (Kyoto University) Satoshi Mizobata (Kyoto University)	Kyoto University Clock Tower Centenniale Holl
2014/9/24	Second Conference on Institutions, Markets, and Market Quality -IEFS Japan Annual Meeting 2014-	Yan Ma (Kobe University) Takashi Komatsubara (Kyoto University) Nobuyoshi Yamori (Kobe University) Taiji Furusawa (Hitotsubashi Univeristy) Naoto Jinji (Kyoto University) Yoichi Sugita (Institute of Developing Economies, Japan External Trade Organization / IDE-JETRO) Yoshinori Kurokawa (University of Tsukuba) Akihiko Yanase (Nagoya University)	Rokkodai Main Building, Kobe University
2015/5/21~2015/5/22	Third Conference on Institutions, Markets, and Market Quality -IEFS Japan Annual Meeting 2015-	Makoto Yano (Kyoto University) Shuhei Takahashi (Kyoto University) Mario Crucini (Vanderbilt University, USA) Takayuki Tsuruga (Kyoto University) Akihiko Yanase (Nagoya University) Misuzu Azuma (Chiba Keizai University) Yasushi Kawabata (Nagoya City University) Miki Matsuo (Kyushu International University) Yoichi Sugita (Japan External Trade Orgnization) Kazuo Mino (Kyoto University) Wanida Ngienthi (Assumption University, Thailand) Yuka Ohno (Hokkaido University) Takashi Komatsubara (Kyoto University) Krishnendu Ghosh Dastidar (Jawaharlal Nehru University, India) Hiroshi Fujii (Chiba Keizai University) Ronald W. Jones (University of Rochester, USA) Masao Oda (Ritsumeikan University) Takumi Naito (Waseda University) Yan Ma (Kobe University) Eden Yu (Chu Hai College of Higher Education, Hong Kong, China) Takeshi Ogawa (Senshu University) Fumio Dei (Kobe University) Yuichi Furukawa (Chukyo University) Rui Ota (Yokohama City University)	Shiran Kaikan Yamauchi Hall, Kyoto University
2015/8/28	J-WEN Mentoring Workshop 2015	Donna Ginther (University of Kansas, USA) Takako Fujiwara-Greve (Keio University) Sayaka Nakamura (Nagoya University) Yuka Ohno (Hokkaido University)	Institute of Economic Research, Kyoto University
2015/11/29	International Symposium "Economic Transition and Income Inequality in China"	Shi Li (Beijing Normal University, China) Kai KAJITANI (Kobe University) Katsuji NAKAGANE (Tokyo University) Xinxin Ma (Hitotsubashi University) Kazufumi YUGAMI (Kobe University) Masashi HOSHINO (Waseda University) Takashi OSHIO (Hitotsubashi University)	Research Building No.2, Kyoto University
2015/12/5	9th Japan-Taiwan-Hong Kong Contract Theory Conference	Hitoshi Sadakane (Kobe University) Stephen Chiu (University of Hong Kong, China) Eric Szu-Wen Chou (National Tsing Hua University, Taiwan) Daisuke Hirata (Hitotsubashi University) Min-Hung Tsay (National Chung Cheng University, Taiwan) Mami Kobayashi (Ritsumeikan University) Hsuan-Chih Lin (Academia Sinica, Taiwan) Kim-sau Chung (Chinese University of Hong Kong, China)	Suzaku Campus, Ritsumeikan University

Date	Title	Guest Speakers	Venue
2016/2/5~2016/2/6	1st International Conference on Evidence-based Policy	Michael Keen (IMF) Makoto Yano (Kyoto University) Nick Buck (University of Essex, UK) Mari Jibu (Japan Science and Technology Agency) Annelies Blom (University of Mannheim, Germany) Ryo Yamada (Kyoto University) Takashi Komatsubara (Kyoto University) Hitoshi Shigeoka (Simon Fraser University, Canada) Masahiro Kuroda (Japan Science and Technology Agency) Takao Kuramochi (Japan Science and Technology Agency) Fumihiko Matsuda (Kyoto University) Fang He (Keio University)	Shiran Kaikan Yamauchi Hall, Kyoto University (5th), Institute of Economic Research, Kyoto University (6th)
2016/2/23~2016/2/24	International Conference "Diversity of Institutional Settings and Path-dependency in Transition Economies	Gerard Roland (University of California, USA) Geoffrey Wood (University of Essex, UK) Hiroaki Hayashi (University of Shimane) Satoshi Mizobata (Kyoto University) Norio Horie (University of Toyama) Ichiro Iwasaki (Hitotsubashi University) Martina Lubyova (Slovak Academy of Sciences, Slovakia) Pavol Babos (Slovak Academy of Sciences, Slovakia) Hiroshi Tanaka (Ritsumeikan University) Markku Sippora (University of Jyväskylä, Finland) Irina Olimpieva (Center for Independent Social Research, Russia) Yutaka Konishi (Gifu University) Katsumi Fujiwara (Osaka University) Andrei Belov (Fukui Prefectural University) Taku Suzuki (Teikyo University) Sadayoshi Otsu (Kobe University) Victor Gorschkov (Kaichi International University)	Institute of Economic Research, Kyoto University
2016/3/8~2016/3/9	International Conference on Financial Risks and Their Management 2016	Katsumasa Nishide (Yokohama National University) Elisa Alós (Universitat Pompeu Fabra, Spain) Kensuke Ishitani (Meijo University) Christoph Frei (University of Alberta, Canada) Ryuichi Yamamoto (Waseda University) Tim Edwards (S&P Dow Jones Indices) Ciprian V. Marin (Lazard Asset Management) Tomohiro Hirano (The University of Tokyo) Kazuo Yamada (Nagasaki University) Asaf Cohen (University of Michigan, USA)	Research Building No.2, Kyoto University
2016/3/9	International Conference on "EU Economic Stagnation and Political Insecurity: Lessons for Asia"	Steven Rosefielde (University of North Carolina, USA) Olga Bobrova (St.Petersburg State University of Economics, Russia) Victor Gorschkov (Kaichi International University) Yoji Koyama (Niigata University) Christine Tsai (Zhejiang University, China) Bruno Dallago (University of Trento, Italy) Evžen Kočenda (Charles University, Czech Republic)	Institute of Economic Research, Kyoto University
2016/8/6~2016/8/10	The 2016 Summer School of the Econometric Society in Kyoto	Atsushi Kajii (Kyoto University) Ariel Rubinstein (Tel Aviv University, Israel) In-Koo Cho (University of Illinois, USA) Efe A. Ok (New York University, USA)	Research Building No.2, Kyoto University
2016/8/27~2016/8/28	International Conference on Financial Risks and Uncertainties	Nan Chen (The Chinese University of Hong Kong, China) Hitoshi Hayakawa (Hokkaido University) Sebastian Jaimungal (University of Toronto, Canada) Lingfei Li (The Chinese University of Hong Kong, China) Tomonori Nakatsu (Ritsumeikan University) Christopher Ting (Singapore Management University, Singapore) Kazutoshi Yamazaki (Kansai University) Kazuhiro Yasuda (Hosei University)	Hotel Oacity Kyowa in Miyakojima, Okinawa
2016/11/22	Hitotsubashi Decision Theory Workshop	Todd Sarver (Duke University, USA) Daisuke Nakajima (Otaru University of Commerce) Philipp Sadowski (Duke University, USA) David Ahn (University of California, Berkeley, USA) Asen Kochov (University of Rochester, USA) David Dillenberger (University of Pennsylvania, USA)	Mercury Tower, Hitotsubashi University

Date	Title	Guest Speakers	Venue
2017/6/17~2017/6/18	International Conference on Financial Risks and Uncertainties 2017	Hyun Jin Jang Ulsan (National Institute of Science and Technology, USA) Tomonori Nakatsu (Ritsumeikan University) Christopher Ting (Singapore Management University, Singapore) Yuan Tian (Ryukoku University) Nan Chen (The Chinese University of Hong Kong, China) Rusudan Kevkhishvili (Kyoto University) Kit Pong Wong (University of Hong Kong, China)	Ohama Nobumoto memorial hall in Ishigakijima, Okinawa
2017/6/22	International Conference "Institutional Changes and Quality of Economic Growth in China"	Kai KAJITANI (Kobe University) Takuma KOBAYASHI (Matsuyama University) Tian ZHU (China Europe International Business School, China) Yang YAO (Peking University, China)	Institute of Economic Research, Kyoto University
2017/8/29~2017/8/30	TMU Workshop on Finance 2017	Sebastian Jaimungal (University of Toronto, Canada) Michael Tehranchi (University of Cambridge, UK) Hoi Ying Wong (Chinese University of Hong Kong, China) Kit Pong Wong (University of Hong Kong, China)	Marunouchi Satellite Campus, Tokyo Metropolitan University / TMU)
2017/12/8~2017/12/10	Kyoto International Conference and EACES - Asia Workshop "The Future of Transition Economics: Emerging Multinationals and The Historical Perspective"	Kalman Kalotay (UNCTAD) Sass Magdolna (Hungarian Academy of Sciences, Hungary) Xuanli Xie (Peking University, China) Zoia Podoba (Saint-Petersburg State University, Russia) Satoshi Mizobata (Kyoto University) Jehoon Park (Incheon National University, Korea) Sergei V. Zhuravlev (Institute of Russian History, RAN, Russia) Byung-Yeon Kim (Seoul National University, Korea) Wuyue You (Central University of Finance and Economics, China) Ichiro Iwasaki (Hitotsubashi University) Irina Denisova (NES, Russia) Hiroaki Hayashi (Ristumeikan University)	Institute of Economic Research, Kyoto University (8th) Shirankaikan Annex, kyoto University (9-10th)"
2018/3/8~2018/3/9	Conference on Institutions, Markets, and Market Quality	Makoto Yano (Kyoto University) Youngsub Chun (Seoul National University, Korea) Takayuki Oishi (Meisei University) Yuichi Furukawa (Chukyo University) Yu Awaya (University of Rochester, USA) Yoichi Sugita (Hitotsubashi University) Atsumasa Kondo (Shiga University) Takakazu Honryo (University of Mannheim, Germany) Taiji Furusawa (Hitotsubashi University) Harrison Cheng (University of Southern California, USA) Krishnendu Dastidar (Jawaharlal Nehru University) Fumihiko Matsuda (Kyoto University) Shigeru Hirota (Cabinet Office, Government of Japan) Saul Estrin (London School of Economics, UK) Satoshi Mizobata (Kyoto University) Jeff Nugent (University of Southern California, USA) Kazuo Nishimura (Kobe University) Takashi Kamihigashi (Kobe University) Eden S. H. Yu (Chu Hai College of Higher Education, Hong Kong) Ma Yan (Kobe University) Rui Ota (Yokohama City University) Yuya Takahashi (Johns Hopkins University, USA)	Yamauchi Hall of Shiran Kaikan, Kyoto University
2018/3/12	International Conference on Advanced Research on the International Politics and Economics:EU, Russia and China	Du Jin (Takushoku University) Zhikai Wang (Zhejiang University, China) Steven Rosefielde (The University of North Carolina, USA) Kumiko Haba (Aoyama Gakuin University) Masahiko Yoshii (Kobe University) Victor Gorschkov (Kaichi International University)	Institute of Economic Research, Kyoto University
2018/3/21	Kyoto Special Seminar on Emerging Multinationals	Andrei Panibratov (Saint Petersburg State University, Russia) Victor Gorschkov (Kaichi International University) Yumiko Nakahara (Kyushu Sangyo University) Takuma Kobayashi (Matsuyama University) Satoshi Mizobata (Kyoto University) Olga Bobrova (Saint Petersburg State University of Economics, Russia)	Institute of Economic Research, Kyoto University

Track Records

◆ KIER Track Records

The Kyoto Institute of Economic Research consistently comes first or second as an economic research institute in Japan. In particular, KIER can cite top-class research results in Japan using both the Social Science Citation Index, which is the most widely used index for evaluating research results, and the number of articles published in international scholastic journals (according to the track record of publishing in the top-ten ranked economic academic journals created by the European Economic Association).

Of all the research conducted at the Institute, “The Spatial Economy” (MIT Press) by specially-appointed professor Masahisa Fujita’s, and co-authored with P. Krugman (Princeton University) and A. J. Venables (London School of Economics), can be cited as representative of making a global impact. This book is a must-read for this field, and the number of times it has been cited as of 2010 has reached 1,000.

◆ Personnel Training

KIER uses young researchers with degrees from graduate schools both from Japan and abroad as term-limited instructors to supply opportunities to experience research and teaching. From 2003 until now, 15 young researchers have been appointed, and are active as researchers working in educational and research bodies such as universities since the end of their appointment period. Further, young researchers are also used as fixed-term assistant teachers who perform joint research activities with employees.

In addition, various part-time researcher systems are used to accept Kyoto University part-time researchers (research organization researchers), GCOE researchers, and Japan Society for the Promotion of Science (JSPS) special researchers for personnel training.

Moreover, young researchers are actively supported and trained through teaching research to PhD candidates in lectures held with the cooperation of the Graduate School of Economics and Faculty of Economics, Kyoto University.

KIER also actively supports domestic/international researchers’ community and a variety of seminars and international conferences for young researchers. In FY2016, the Institute supported the Econometric Society, Summer Workshop on Economic Theory (SWET), Comparative Economics Workshop for International Young Researchers, and so on. It was awarded the Education Merit Award by the Ministry of Education and Training of Viet Nam.



Honors / Awards

Telecom Social Science Award	1970	Takamitsu Sawa
Nikkei Prize for Economics Books	1970	Takamitsu Sawa
Nikkei Prize for Economics Books	1971	Masahiko Aoki
Medal with Purple Ribbon	1985	Masao Baba
Medal with Purple Ribbon	1987	Hisao Onoe
The Japan Academy Award	1990	Masahiko Aoki
Hiromi Arisawa Prize for the Association of American University Presses	1991	Masahiko Aoki
1st Prize, European Meeting on Cybernetics and Systems Research	1992	Fumiko Seo
Medal with Purple Ribbon	1996	Kazuo Koike
The Energy Forum Award ; Award for Spread enlightenment	1996	Takamitsu Sawa
Wakayama Prefecture Culture Prize	1998	Takamitsu Sawa
The Energy Forum Award	1998	Takamitsu Sawa
The Nakahara Prize, Japanese Economic Association	1999	Akira Okada
Nikkei Prize for Economics Books	2000	Masahisa Fujita
The Annual Award for Research Monographs on Labor	2001	Kenn Ariga
Nikkei Prize for Economics Books	2002	Hiroshi Osano
The William Alonso Memorial Prize for Innovative Work in Regional Science	2002	Masahisa Fujita
The Japan Institute of energy :The award for Distinguished paper	2004	Takamitsu Sawa
The Sakashita Prize, Applied Regional Science Conference	2004	Tomoya Mori
Paper Award of Japan Society for Fuzzy Theory and Intelligent Informatics	2004	Fumiko Seo, Takao Fukuchi
Prize for Publication, Mathematical Society of Japan	2005	Kazuo Nishimura
IJET LionelW. McKenzie Prize for contributions to economic theory	2007	John Stachurski
Excellent presentation award in 6th Annual Meeting (2007) for The Japan Association for Research on Testing	2007	Takuya Kimura
Third Japan Society for the Promotion of Science (JSPS) Prize	2006	Atsushi Kajii
Medal with Purple Ribbon	2007	Takamitsu Sawa
JSIE Kojima Kiysohi Prize, The Japan Society of International Economics	2007	Ryuhei Wakasugi
Honorary Degree of Doctor, University of Aix- Marseilles II	2007	Kazuo Nishimura
The Nakahara Prize, Japanese Economic Association	2008	Atsushi Kajii
2008 JAIBS Award, Japan Academy of International Business Studies	2008	Ryuhei Wakasugi
Nikkei Prize for Economics Books	2008	Kazuo Nishimura, Makoto Yano
Japan Stastistical Society Research Award 2009	2009	Yoshihiko Nishiyama
JSIE-Kojima Kiysohi Prize, The Japan Society of International Economics	2009	Kazumichi Iwasa
Japan Statistical Society Ogawa Research Prize	2010	Ryo Okui
Kyoto Shimbun Grand Award in Culture/Academy	2010	Kazuo Nishimura
Member of the Japan Academy	2010	Masahisa Fujita
Medal with Purple Ribbon	2012	Kazuo Nishimura
Member of the Japan Academy	2012	Kazuo Nishimura
Tenth Japan Society for the Promotion of Science (JSPS) Prize	2013	Tomoyuki Nakajima
11th Japan Society for the Promotion of Science (JSPS) Prize	2014	Tadashi Sekiguchi
The Order of the Sacred Treasure, Gold and Silver Star	2016	Masahisa Fujita

Number of Young Researchers (PD) Accepted

FY 2013	FY 2014	FY 2015	FY 2016	FY 2017
17	16	13	15	11

Latest Main Appointments among PD and Student Teachers (FY2003~)

■ **Universities** : Hokkaido University, Otaru University of Commerce, Tohoku University, Yamagata University, University of Tsukuba, The University of Tokyo, Hitotsubashi University, Yokohama National University, Nagoya University, Shiga University, Kyoto University, Osaka University, Kobe University, Wakayama University, Hiroshima University, Kyushu University, Nagasaki University, Aomori Public University, Tokyo Metropolitan University, Nagoya City University, Kobe City University of Foreign Studies, Shimonoseki City University, Sapporo Gakuin University, Chiba University of Commerce, Kanagawa University, Nihonbashi Gakkan University, Asia University, Keio University, Seikei University, Chuo University, Tokyo Keizai University, Hosei University, Waseda University, Nagoya Gakuin University, Gifu Shotoku Gakuen University, Kyoto Gakuen University, Doshisha University, Ritsumeikan University, Ryukoku University, Osaka Gakuin University, Osaka University of Economics, Kansai University, Kinki University, Kwansei Gakuin University, Konan University, Kyoto Sangyo University, Tezukayama University, Kyoto Seika University, Hiroshima University of Economics, Matsuyama University, Fukuoka University, Kyushu International University, Fukuoka University, Ritsumeikan Asia Pacific University, University of Melbourne, Universidad Nacional Autonoma de Mexico

■ **Governmental Organizations** : Technology Research Institute of Osaka Prefecture, RIKEN, Institute of Developing Economies, Policy Research Institute (Ministry of Finance), Ehime Prefecture, Food and Agriculture Organization of the United Nations

■ **Private Firms** : Institute of Intellectual Property, NTT, MRI Research Associates, Inc., AXA Life Insurance, Institute for Areal Studies Software Research Associates, Inc. (SRA), Toyota Motor Corporation, EPS Corporation, Shinsei Bank, Recruit Holdings Co.,Ltd., Institute of Transportation Economics, Keizai Doyukai (Japan Association of Corporate Executives), Sumitomo Mitsui Card Co., Ltd., IBM Japan Services Company Ltd., Mitsubishi UFJ Trust and Banking Corporation, Mitsubishi Research Institute, Inc., Chubu Region Institute for Social and Economic Research, Sumitomo Mitsui Banking Corporation, Simplex Financial Holdings Co.,Ltd., Asset Management ONE Co.,Ltd., Nanjing Securities, Mizuho Financial Group Inc., Nomura Reserch Institute, Ltd.

◆ International Exchange

KIER is widely known as an international research center for economic theory. The International Journal of Economic Theory, which is published jointly with Keio University, is highly regarded as a global specialist journal, and is the first international journal of economic theory edited primarily by Japanese researchers. Further, in addition to establishing posts for non-Japanese visiting teachers and inviting world-leading researchers, KIER is also engaged in various joint international research, and is ceaselessly visited by non-Japanese researchers. In light of this track record, KIER has signed agreements with overseas universities in America, France, and elsewhere, and is actively engaging in research exchange.

Academic Exchange Agreements with Foreign Research Instiutitions

County	Institution	Period
Russian Federation	Higher School of Economics	2007/4/2~2022/4/1
French Republic	Groupement de Recherche en Economie Quantitative d'Aix Marseille (GREQAM)	2007/11/28~2023/1/29
Republic of Korea	The Institute of Economic Research, Seoul National University	2018/2/16~2023/2/17
United States of America	Department of Economics, University of North Carolina at Chapel Hill	2009/4/22~2019/4/21
Republic of Finland	Helsinki Center of Economic Research	2009/9/8~2019/9/7
Hungary	The Institute of Economics, Hungarian Academy of Sciences	2010/3/23~2022/7/23
People's Republic of China	China Center for Economic Research, Peking University	2017/6/22~2022/6/21
Taiwan	Asia University	2018/4/2~2023/4/1
Russian Federation	Saint-Petersburg University	2018/4/19~2023/4/18

Researchers from Abroad

Area	Fiscal Year	FY 2013	FY 2014	FY 2015	FY 2016	FY 2017
Asia		35	11 (2)	23 (2)	10 (2)	22 (2)
North America		22 (2)	18	22 (2)	29 (2)	14 (0)
South & Central America		2	0	0	0	0
Europe		22 (3)	22 (3)	21 (3)	20 (2)	19 (4)
Oceania		1 (1)	2	2	3 (1)	2 (0)
Middle East		2	3	1	3 (0)	2 (0)
Africa		0	0	0	0	0
Total		84 (6)	56 (5)	69 (7)	65 (7)	59 (6)

Note: Figures in parentheses describe long-term appointments within the total number.

Library

Ever since its opening in 1965, the Library of the Institute of Economic Research has been actively gathering various data, centering on specialist publications and statistical data relating to economic studies. As of March 2018, the library houses in excess of 80 thousand specialist publications and data in total to support the activities of researchers both from Japan and abroad.

Library Hours	
●	Mon to Fri 9:00 to 17:00
●	Closed on Sat, Sun, holidays, founder's day (18 June), 1 to 5 April, the summer holiday period, the winter holiday period, and the first day of every month (Closed on the following open day if the first day is a holiday.)
●	Use of the Library by Non-Students
	When using, please present some form of identification.
	Browsing and temporary removal for copying only are permitted.

McKenzie Library (Total collection 1,495 publications)

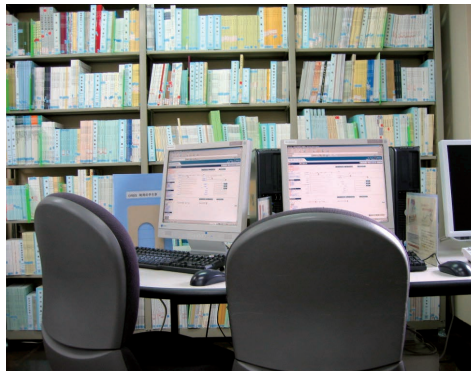
These publications were donated to the Kyoto Institute of Economic Research by Rochester University professor emeritus Lionel McKenzie (1919.1.26-2010.10.12). After graduating from Duke University in the United States, Professor McKenzie studied at Princeton University graduate school, where he obtained both his masters and PhD in economics, and went on to teach at both MIT and Duke University. Following his appointment as professor to Rochester University in 1957 until his retirement, Professor McKenzie actually strove to train researchers over the course of 32 years. Every time he visited Japan, Professor McKenzie held lectures and talks at KIER seminars, as well as visiting and attending international symposiums sponsored by KIER. Consequently, he had close ties to Kyoto University and so he donated his massive library to KIER in October 2003. Professor McKenzie's students are active around the world, and there are many of his students who are teaching at other universities in Japan as well. Still he donated his books to the Kyoto Institute of Economic Research, which is an unparalleled honor for the institute. Making the most of this opportunity, KIER established the McKenzie Library within the institute itself, which continues to be of use in improving the research standards of both faculty and students at Kyoto University.



McKenzie Library



Library



Library



Library

Total number of publications						
Classification	Japanese books (volumes)	Western books (volumes)	Total collection (volumes)	Japanese periodicals (types)	Western periodicals (types)	Total No. of periodicals (types)
Total No. of Publications	41,593	42,188	83,781	2,792	1,303	4,095

(as of March 2018)

Finances

Total Budget (National School Special Accounts and University Grants)						(Unit / 1,000 Yen)
Fiscal Year		FY 2013	FY 2014	FY 2015	FY 2016	FY 2017
Item						
University Grants		429,115	464,702	412,951	401,874	399,894
Breakdown	Personnel Expenses	335,838	379,095	327,696	297,729	293,388
	Cost of Supplies	93,277	85,607	85,255	104,145	106,506

Grants-in-Aid for Scientific Research Expenses (KAKENHI)						(Unit / 1,000 Yen)
Fiscal Year		FY 2013	FY 2014	FY 2015	FY 2016	FY 2017
Item						
Number of Grants		13	15	17	16	17
Amount of Grants		118,200	115,874	118,268	36,020	27,500

Does not include share of expenses or Grant-in-Aid for JSPS Fellows. Direct accounting only.

External Funds					(Unit / 1,000 Yen)	
Fiscal Year		FY 2013	FY 2014	FY 2015	FY 2016	FY 2017
Item						
Entrusted Reserch Fund	Number	5	8	8	5	4
	Amount	25,882	23,647	27,950	23,086	17,362
Collaborative Reserch with Private Sector	Number	2	2	2	2	2
	Amount	21,519	23,328	22,755	21,963	20,528
Donations	Number	2	3	7	0	1
	Amount	1,176	2,250	4,867	0	400
Total	Number	9	13	17	7	7
	Amount	48,577	49,225	55,572	45,049	38,290

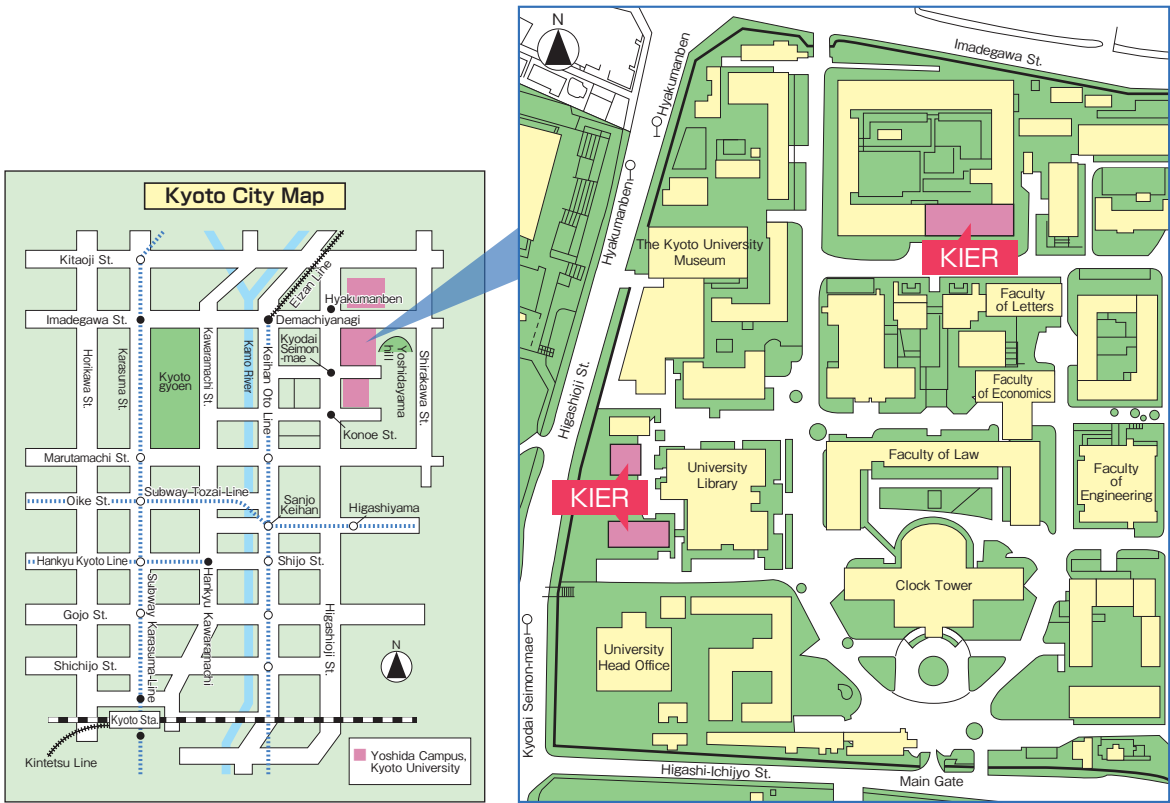
Other Grants-in-Aid, etc. (Unit / 1,000 Yen)					
Fiscal Year Item	FY 2013	FY 2014	FY 2015	FY 2016	FY 2017
Improvement of Research Environment for Young Researchers (Tenure Track System)	26,424	21,962	9,303	3,000	2,933
Inter-Graduate School Program for Sustainable Development and Survivable Societies	—	—	—	442	462
Program for Leading Graduate Schools "Graduate School of Advanced Leadership Studies"	2,000	3,000	500	600	150
Building of Consortia for the Development of Human Resources in Science and Technology (K-CONNEX)	—	—	7,080	12,000	—

Direct accounting only.

Chronological Table

March 1962	▶	The establishment of the Institute of Economic Research in Kyoto University was determined, following the partial revision of The National School Establishment Law in Law No. 36 published in 1962.
April 1962	▶	The Institute of Economic Research was established with two research divisions, Industrial Structure and Comparative Industry.
May 1962	▶	The administrative office was established in the main campus, Kyoto University.
December 1962	▶	A support group for constructing the institute was organized.
August 1963	▶	The institute was moved to a temporary building in Yoshida-Shimo Adachi-cho, Sakyo-ku. (Part of the research rooms remained in the west area of the campus.)
April 1964	▶	Two new research divisions, Local Economy and Resource Economy, were established according to ordinance No. 10 of the Ministry of Education.
July 1964	▶	The construction of a new building was begun by the above-mentioned support group.
May 1965	▶	The construction of the new building was completed and the building was given to the institution by the support group. The institute was moved to the new building.
April 1966	▶	Two new research divisions, Planned Economy and Industrial Statistics, were established according to ordinance No. 24 of the Ministry of Education.
April 1968	▶	The three divisions, Industrial Structure, Resource Economy and Industrial Statistics, were transferred to experimental divisions.
October 1972	▶	A celebration party and memorial lecture meeting were held in the institute on the occasion of the 10th anniversary. A celebration party and memorial lecture meeting were held at Asahi-Shinbun hall in Osaka on the occasion of the 10th anniversary.
April 1976	▶	The Local Economy Division was transferred to an experimental division.
April 1977	▶	The Environmental Economy Division was established according to ordinance No. 15 of the Ministry of Education.
April 1978	▶	The Planned Economy Division was transferred to an experimental division.
April 1979	▶	The Comparative Economy System Division was established according to ordinance No. 12 of the Ministry of Education.
April 1981	▶	The Contemporary Economic Analysis Division (Visiting research division) was established according to ordinance No. 12 of the Ministry of Education. The main research building was extended to a four story building.
November 1982	▶	A memorial lecture meeting was held at the Culture Information Center of Osaka Prefecture on the occasion of the 20th anniversary.
December 1982	▶	A memorial lecture meeting was held in the institute on the occasion of the 20th anniversary.
April 1983	▶	The Comparative Economic Analysis Division (Foreign visiting research division) was established according to ordinance No. 11 of the Ministry of Education.
April 1986	▶	Ordinance No. 19 of the Ministry of Education reorganized the institute into four major research divisions of Quantitative Industrial Analysis, Economic Planning, Resource Environment, and Comparison of Economies, and 12 research areas.
April 1991	▶	A research area was added, amounting to 13 research areas.
October 1992	▶	A memorial lecture meeting was held at the Faculty of Economics on the occasion of the 30th anniversary. A memorial symposium was held at Senri Life Science Center in Toyonaka on the occasion of the 30th anniversary.
March 1993	▶	The Comparative Economic Analysis Division (Foreign visiting research division) was closed.
April 1993	▶	The International Political Economy Division (Foreign visiting research division) was established according to ordinance No. 19 of the Ministry of Education.
June 1994	▶	The National Wealth Division was established according to ordinance No. 24 of the Ministry of Education, amounting to 5 major research divisions and 15 research areas.
April 2000	▶	The Research Center for Financial Engineering was established.
October 2001	▶	Endowed research division "Applied Financial Engineering Division (Sponsored by Nomura Securities Group)" was established for a time period of until September 30, 2004
April 2002	▶	The Economic Planning Division was renamed as the Economics of Complex Systems Division according to the law amending The National School Establishment Law.
October 2002	▶	A memorial symposium and celebration party were held at Kyoto International Community House on the occasion of the 40th anniversary.
November 2002	▶	A memorial symposium and celebration party were held at Gakujutu-Sogo Center (Hitotsubashi Memorial Hall) in Tokyo on the occasion of the 40th anniversary.
February 2004	▶	Professor McKenzie, Professor emeritus of University of Rochester, received the title of Honorary Doctor of Kyoto University. The McKenzie Library was opened with books donated by Professor McKenzie, Professor emeritus of University of Rochester.
April 2004	▶	The institute was reorganized into three major research divisions of the Economic Information Analysis, Economic Institution, Public Policy, and two research centers of Financial Engineering and Economics of Complex Systems. The Tokyo branch of the Institute of Economic Research was opened in Marunouchi, Tokyo. (for a time period of until January 31, 2012.)
October 2004	▶	The time period for the endowed research division "Applied Financial Engineering Division (Sponsored by Nomura Securities Group)" was renewed until September 30, 2007.
July 2005	▶	The Research Center for Advanced Policy Studies was established.
August 2006	▶	Applied Financial Engineering Division (Sponsored by Nomura Securities Group) was renamed as Applied Financial Engineering Division (Sponsored by Nomura Group) .
April 2007	▶	Endowed research division "Educational Economics Division" was established for a time period of until March 31, 2010
October 2007	▶	Endowed research division "Mathematical Finance Division (Nomura Group)" was established for a time period of until September 30, 2010
March 2008	▶	The earthquake reinforcement of the library annex was completed. This became the new north wing of KIER and was handed over.
August 2008	▶	The Tokyo office (at Marunouchi) was opened in the Tokyo branch as a partnership and communications base concomitant with the implementation of the GCOE (Keio University) program. (for a time period of until January 31, 2012.)
September 2008	▶	The Tokyo office (at Mita) was opened in the Tokyo branch as a teaching and research base concomitant with the implementation of the GCOE (Keio University) program.(for a time period of until March 31, 2016)
December 2008	▶	816m² of the south wing of the 4th floor of the Graduate School of Engineering building No. 2 was received by the Institute of Economic Research as a space for research and lectures.
April 2009	▶	The Public Policy Research Division changed its name to the Strategic Economic Studies Division.
April 2010	▶	The Research Center for Financial Engineering was reorganized as the Financial Research Division. The Joint Usage/Research Center was certified as an "International Joint Research Center of Advanced Economic Theory". The new "International Research Unit of Integrated Complex System Science (IRU-ICSS)" is being established as a companion unit. (Scheduled for completion on March 31 2022) Further, the Institute of Sustainability Science is also participating.
April 2011	▶	The Research Center for Advanced Policy Studies was established in Research Divisions.
November 2012	▶	A memorial lecture and celebration were held at Shiran Kaikan on the occasion of the Institute's 50th anniversary. A memorial lecture and celebration were held at the Kyoto University Tokyo Office on the occasion of the Institute's 50th anniversary.
March 2013	▶	The earthquake reinforcement of KIER's main wing was completed.
April 2013	▶	The Administration Office (Letters), Main Campus was established for more efficient and integrated administrative processing.
July 2013	▶	The Administration Office (Letters), Main Campus went into full-scale operation following the completion of the office relocation.
April 2014	▶	The new "Social Science Unit for Research and Education" will be established as a companion unit. (Scheduled for completion on March 31, 2025.)
July 2015	▶	KIER participated in the launch of the International Research Unit of Advanced Future Studies (IUR-AFS) on July 28, 2015.
April 2016	▶	The Institute of Sustainability Science transitioned into the Research Unit for Development for Global Sustainability.

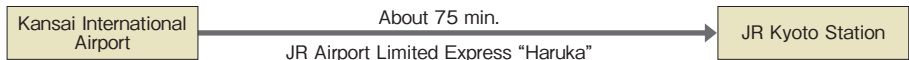
Map & Access



Access to Kyoto Station from Kansai International Airport

1) Train

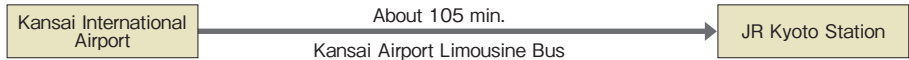
- Airport Limited Express Train "Haruka"



- JR Train



2) Airport Limousine Bus



Transportation to Kyoto University from JR Kyoto Station

- To take a taxi

The journey will take about 20 minutes and cost approx. 2,000 yen.

- To take the bus: Kyoto City Bus

The bus ride will take approx. 30-35 minutes and cost 230 yen.
206: bound for Kitaoji Bus Terminal via Higashiyama St.
Get off at "Kyodai Seimon-mae".
17: bound for Ginkaku-ji via Kawaramachi St.
Get off at "Hyakumanben".

Contact information of Kyoto University, Institute of Economic Research

⌋URL⌋<http://www.kier.kyoto-u.ac.jp>

Yoshida-Honmachi, Sakyo-ku, Kyoto 606-8501 TEL.075-753-7102