

KYOTO

KIER

2016-2017 Overview of Institute of Economic Research Kyoto University



Kyoto University

CONTENTS

◆2016-2017 Overview of Institute of Economic Research Kyoto University

Foreword	01
Organization and Research Staff	02
Actual Staff	03
List of Directors	03
List of Professors Emeriti	03
Research Divisions and Centers	
Economic Information Analysis Division	04
Economic Institution Division	04
Strategic Economic Studies Division	05
Finance Research Division	05
Research Center for Economics of Complex Systems	06
Research Center for Advanced Policy Studies	06
Contemporary Economic Analysis Division (Visiting Researchers)	07
Joint Usage / Research center	
“International Joint Research Center of Advanced Economic Theory”	07
International Research Unit of Integrated Complex System Science (IRU-ICSS)	07
Social Science Unit for Research and Education	08
International Research Unit of Advanced Future Studies (IRU-AFS)	08
Research Unit for Development of Global Sustainability	08
ICAM Kyoto Branch	08
Social Contribution	09
Track Record	16
Library	18
Finances	19
Chronological Table	20
Map & Access	21



Foreword



Satoshi Mizobata, Director
Kyoto Institute of Economic Research

For close to half a century, the Kyoto Institute of Economic Research (KIER) has been a leader in Japan in the sphere of fundamental scientific economics, with a focus on theoretical economics and econometrics. Moreover, the Institute has recently increased its emphasis on research in the sphere of applied scientific aspects of economics, and has gained a strong reputation for its positive progress in policy assessment and policy recommendations.

KIER conducts prominent research in the field of economics at the international level, and our mission is to contribute to the further development of the field. Each member of the Institute aims to be a pioneer at the front lines of international research, and our research team works with the primary goal of leading the field. For instance, in terms of number of research papers published in international journals per researcher and the frequency of their citations in various scholarly publications, KIER, when ranked together with the Graduate School of Economics (Faculty of Economics), maintains one of the top positions among domestic academic institutions specializing in economics. The Institute has significantly contributed to the development of economic sciences at the international level.

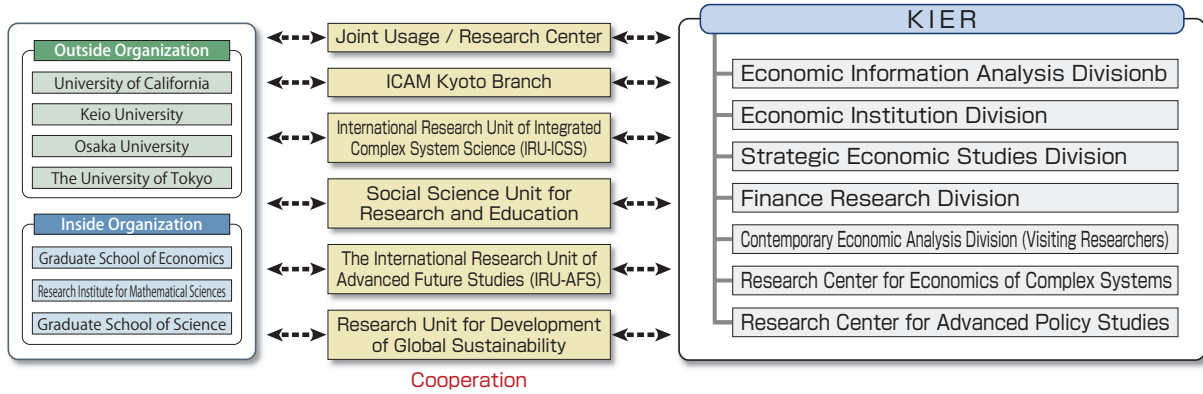
KIER has managed to keep its position as the most prominent center for economic research in Japan from its creation up until today thanks to its pursuit of the so-called American research institution model and its recognition of the necessity of competition that comes with it. KIER was the first institution in Japan to implement reforms under this model. Based on these, Institute researchers began sending their papers to researchers abroad in the form of technical reports, attempting to have them published in international, peer-reviewed scientific journals. Researchers' academic and research achievements would be evaluated by the number of papers published in specialized, peer-reviewed journals and the quality of those papers. KIER would not issue its own academic journal, in order to stimulate publication in peer-review journals. Institute Researchers would not be discouraged from taking long-term research trips overseas. One secretary would be appointed for every two professors. KIER would also actively invite foreign researchers. The basic criteria for employment and promotion policies would be academic and scientific results; the prestige of applicants' previous educational institutions would not matter. This system—oriented on scientific and academic results—was quite a unique one in Japan's economic sciences community of the late 1960s. Thanks to its maintenance and further development of this system, KIER has become a highly honored Mecca of economic theory and econometrics.

Socioeconomic, research, and educational environments are constantly changing, and our Institute is evolving in three major directions. One is in its contribution to the development of economic sciences through joint research projects. In 2010, KIER was approved by the Japanese Ministry of Education, Culture, Sports, Science and Technology (MEXT) as a Joint Usage/Research Center with an emphasis on fundamental research in the sphere of Economics of Complex Systems and Economic Strategy and Organization, under the name "International Joint Research Center of Advanced Economic Theory". The research resources KIER has collected and international research networks it has formed have strengthened its role in the international research community. The second direction is an approach that emphasizes the importance of connecting real economic processes and theoretical research, a stance that has led KIER to contribute to the development of applied scientific studies. The Research Center for Advanced Policy was established in 2005, and is currently in its second term of operation. With the cooperation of the five academic researchers from prefectural ministries it has hired for fixed-term appointments, KIER has been raising the level of policy studies and actively proposing policy recommendations. This enhanced interface between theoretical studies and policy implications allows the Institute to contribute to society and to the economy. Particularly, we organized the Database Unit for promoting evidence-based policy. The third direction is in the improvement of KIER's capacity to share information globally. To do so, we actively organize international conferences and contribute towards editing International journals.

KIER also considers education to be an important part of its mission and actively participates in educating graduate school students and young researchers. Professors from our Institute teach at the Graduate School of Economics, and KIER also accepts special researchers from the Japan Society for the Promotion of Science, fixed-term researchers, and others. KIER has earned a positive reputation as a training grounds for researchers, as many young researchers have gone on to become professors at renowned universities after completing their education at our Institute. Moreover, KIER was one of the first to introduce the tenure-track system at Kyoto University and in the field of social sciences. Our Institute maintains an open-door policy towards employment and education of young talented researchers.

The world economic crisis and opaque economic conditions in the aftermath of it pose new challenges to the whole field of economics. Nowadays, when both competitiveness and research capability of the Japanese society are being questioned, there raises a necessity of conducting high-quality research conforming to international standards. I am confident that research spirit of our institute, institutionalized research and educational styles, and our new directions will allow KIER to become a good means in tackling the contemporary problems in the field of economics. KIER has significantly contributed to the development of economic sciences in Japan, both by conducting modern research activities in the sphere of economics, and as a center of education and research for joint usage and joint research projects which attracts many researchers from around the world. KIER will continue its unceasing efforts and strive to maintain its position as a center of development and creation in the sphere of economics.

Organization and Research Staff



	Research Divisions	Research Areas	Research Staffs
Director	Economic Information Analysis Division	Macroeconometric Analysis	Professor Hiroshi TERUYAMA
		Microeconometric Analysis	Professor Hiroshi OSANO
			Associate Professor Ryo OKUI
		Experimental Economics	
	Economic Institution Division	Economic Analysis of Institutions	Professor Satoshi MIZOBATA
			Professor Akira OKADA
		Economic Analysis of Organizations	Professor Chiaki HARA
		International Trade and Economic Growth	
	Strategic Economic Studies Division	Game Theory	Professor Tadashi SEKIGUCHI
			Assistant Professor Chia-hui CHEN
		Environment and Public Policy	
		Strategic Market Theory	Professor Atsushi KAJI
	Finance Research Division		Assistant Professor Ryuji SANDO
		Mathematical Finance	Program-Specific Assistant Professor Takehito MASUDA
		Risk Management	
		Market Quality	Professor Akihisa SHIBATA
	Contemporary Economic Analysis Division (Visiting Researchers)	Financial Econometric Analysis	Professor Makoto YANO
		International Financial Economics (Visiting Researchers)	Professor Yoshihiko NISHIYAMA
			Professor Hulya ERASLAN
			Associate Professor Youichiro HIGASHI
	Research Center for Economics of Complex Systems		Associate Professor Kazuho YOKOGAWA
		Complex Economic Systems	Professor Tomoyuki NAKAJIMA
			Assistant Professor Shuhei TAKAHASHI
		Spatial Economics	Professor Tomoya MORI
	Research Center for Advanced Policy Studies	Dynamic Economic Systems	Professor Tadashi SHIGOKA
			Associate Professor Shigeru Hirota
			Associate Professor Koji ITO
			Associate Professor Junji TOJO
	Joint Usage / Research Center "International Joint Research Center of Advanced Economic Theory"		Associate Professor Masato YODO
			Associate Professor Daizo KOJIMA
			Project Professor Masahisa FUJITA
			Project Professor Kazuo NISHIMURA
	Research Unit for Development of Global Sustainability		Project Professor Kazuo MINO
			Associate Professor Yuan WANG
	Administration Office Head Koji ISHII	General Affairs Section Library Section	Section Head Masatomi SASAKI Section Head Reiko INOUE

(as of July 2016)

Actual Staff

Classification	Professor	Associate Professor	Lecturer	Assistant Professor	Sub-total	Administrative Staff	Total
Research Divisions	13	6		4	23	5	28
Visiting researchers		2			2		2
Foreign visiting researchers	1				2		1
Other Grant-in-Aid, etc.	3	1			4		4
Total	17	9		4	31	5	35

(as of July 2016)

List of Directors

List of Directors

Directors	Term
KISHIMOTO, Seijiro	1962. 4. 1 ~ 1966. 3. 31
AOYAMA, Hideo	1966. 4. 1 ~ 1971. 11. 30
BABA, Masao	1971. 12. 1 ~ 1974. 3. 31
MORIGUCHI, Chikashi	1974. 4. 1 ~ 1974. 7. 15
ONOE, Hisao	1974. 7. 16 ~ 1978. 7. 15
YUKIZAWA, Kenzo	1978. 7. 16 ~ 1980. 2. 8
MIYAZAKI, Yoshikazu	1980. 2. 8 ~ 1980. 3. 31
MIYAZAKI, Yoshikazu	1980. 4. 1 ~ 1983. 4. 1
ONOE, Hisao	1983. 4. 2 ~ 1986. 3. 31
BABA, Masao	1986. 4. 1 ~ 1986. 10. 27
KOIKE, Kazuo	1986. 10. 27 ~ 1986. 12. 31
KOIKE, Kazuo	1987. 1. 1 ~ 1988. 3. 31
SUGIMOTO, Syoshichi	1988. 4. 1 ~ 1990. 3. 31
SAWA, Takamitsu	1990. 4. 1 ~ 1994. 3. 31
FUKUCHI, Takao	1994. 4. 1 ~ 1995. 3. 31
SAWA, Takamitsu	1995. 4. 1 ~ 1999. 3. 31
FUJITA, Masahisa	1999. 4. 1 ~ 2001. 3. 31
SAWA, Takamitsu	2001. 4. 1 ~ 2006. 3. 31
NISHIMURA, Kazuo	2006. 4. 1 ~ 2010. 3. 31
YANO, Makoto	2010. 4. 1 ~ 2012. 3. 31
MIZOBATA, Satoshi	2012. 4. 1 ~ 2016. 3. 31
OKADA, Akira	2016. 4. 1 ~ 2016. 12. 31
MIZOBATA, Satoshi	2017. 1. 1 ~

List of Professors Emeriti

List of Professors Emeriti

Professor Emeriti	Date of the title conferred
KISHIMOTO, Seijiro	1966. 4. 2
AOYAMA, Hideo	1973. 4. 2
ONOE, Hisao	1986. 4. 1
MIYAZAKI, Yoshikazu	1990. 1. 23
SEO, Fumiko	1993. 4. 1
SUGIMOTO, Syoshichi	1996. 4. 1
MORIGUCHI, Chikashi	1997. 3. 4
FUKUCHI, Takao	1997. 3. 4
AOKI, Masahiko	2001. 3. 6
SAWA, Takamitsu	2006. 4. 1
UEHARA, Kazuyoshi	2007. 4. 1
SAKAI, Akio	2007. 4. 1
FUJITA, Masahisa	2007. 4. 1
TUKATANI, Tuneo	2008. 4. 1
NISHIMURA, Kazuo	2010. 4. 1
WAKASUGI, Ryuhei	2012. 4. 1
IMAI, Haruo	2015. 4. 1
MINO, Kazuo	2015. 4. 1
ARIGA, Kenn	2016. 4. 1

● Research Divisions and Centers

Economic Information Analysis Division

This division, comprehensively viewing the theory and application of econometric analysis and experimental economics as economic information analysis, aims to contribute to the development of the research field. The division comprises three research sections: “macroeconometric research”, “microeconometric research”, and “experimental economics research”. The objectives of the division are described below.

The field of empirical economic research that, by using quantitative data to identify and statistically analyze economic activity, tries to elucidate behavioral principles of economic agents and economic laws of motion has been exhibiting new developments in recent years. Since developments in computer technology have enabled the efficient statistical calculations of large amounts of data, the field of microeconometrics, which analyzes microeconomic data related to households and firms based on the behavioral principles of economic agents, is also developing. For this reason, in the field of econometrics, remarkable progress is being observed in the development of analysis methods for panel data, which comprises time-series and cross-sectional information, and qualitative data that cannot be expressed in quantitative form. Further, efforts at creating panel data by means of questionnaire surveys, etc., will grow even more important in the future. The objective of “microeconometric research section” is to contribute to the development of microeconometrics by fusing econometric theory with the applied microeconomic areas such as the labor economics, corporate finance, and industrial organization.

At the same time, the analysis of macroeconomic data using time-series analysis techniques and computer-based numerical simulation techniques forms the core of the empirical analysis used in modern macroeconomics. The objective of “macroeconometric research section” is, in order to realize the further development of these cutting-edge fields of macroeconometrics, to promote the coordination of econometric theory centering on time-series analysis techniques, economic model analysis techniques based on numerical calculation (computational economics), and the theoretical and empirical analysis in macroeconomics.

There have also, in recent years, been remarkable advances in the experimental methods used in economics. The objective of “experimental economics research section” is to develop the analysis of economic phenomena using economic experiments, statistical techniques for analyzing the experimental results, and behavioral economics.

Economic Institution Division

In this division, we study the emergence and evolution of social and economic organizations, institutions, and conventions. We are particularly interested in social and economic institutions, corporate organizations, and social decision-making processes. We pursue our research agenda under the following two headings.

Under the “economic analysis of institutions” heading, we compare economic institutions based on the empirical and theoretical analysis of the market system and various other institutions. We also attempt to assess the emergence and evolution of such systems by incorporating techniques and insights developed in sociology.

Under the “economic analysis of organizations” heading, we study the inner structure of organizations and the relationships between them. We apply game theory to deal not only with corporate organizations but also with legislative bodies and other types of organizations. We empirically assess our findings and compare them with results in law, management, biology, and other related fields.



Strategic Economic Studies Division

This division bases its studies on the economic agents' strategic behavior, which plays an important role in advanced economic theory. It aims to promote and disseminate state-of-the-art theoretical research and its flexible and systematic application. Established in 2009, this division also inherits the research program of the former Public Policy Division and undertakes research which connects the results of theoretical analysis to policy planning. In order to conduct strategic analysis of the economy from various aspects such as theory, application, and policy implications, this division is further divided into two areas. One is "market economic strategy" and studies strategic transactional relationships in the market, which is the most important economic institution. From a wide range of perspectives, the area analyzes the economic phenomena forming a basis of the policy analysis. The other area is "game theory", which comprehensively studies the individual and group-level decision-making under settings such as dynamics and imperfect information.

In "market economic strategy", the subject of research is a broad range of aspects of the market economy. It includes the analysis of the strategic behavior of firms, consumers, and governments. It also concerns evaluation of market performance and economic effects of various policies. Further, as a resource allocation mechanism closely related to the market economy, this area undertakes research on auction models and their theoretical properties especially in the case of multiple objects and dynamics, together with the issue of design of auction formats. The area also studies decision theory under risk and uncertainty, which is fundamental to decision-making by participants in the market.

In "game theory", this area further develops the methodology of game theory that is the center of the strategic analysis of the economy through incorporating cutting-edge issues such as dynamics, imperfect information, and incomplete information. The subject of research includes theory of cooperation under long-run relationships with general information structure and the problems of signaling and screening under dynamic environments as well as the applications of those results to the behaviors of firms and organizations.

Finance Research Division

Investors and business people are required to discern the uncertainty existing within companies and the market and accurately pursue profitability within them with regard to the increasingly chaotic current economy. Although it is critical to understand future uncertainties and to identify and measure the various risks and to decisively optimize risk management, it is Financial Engineering and Finance that provide the foundation regarding them. With this in mind, it is evident that Financial Engineering and Finance are fields of great importance. The Kyoto Institute of Economic Research established the Research Center for Financial Engineering in 2000 and it has played a role as an international hub in the field for 10 years. In order to expand the functions of the center as a base for Financial Engineering and finance research and education which were established through 10 years of its activity, the center was reorganized to become "Finance Research Division" in April 2010.

The Finance Research Division aims to examine, in the light of the current global financial crisis, the optimal risk management in financial markets and the roles of infrastructure, institutions, convention and ethics to improve the financial market quality as well as behavioral finance theory in order to contend with a wider range of problems at higher levels than ever before. In addition, it seeks to analyze the factors involved in the financial crises as well as the measures needed to prevent their re-occurrence. Moreover, placing importance on risk management in organizations, the Division has established the following areas as its research fields: "Risk Management", "Market Quality", "Mathematical Finance", "Financial Econometrics Analysis" and "International Financial Economics". The Division will continue to study measures to revitalize the economy and measures to deal with risks facing the Japanese economy in the future, while cooperating closely with other Divisions at the Kyoto Institute of Economic Research.

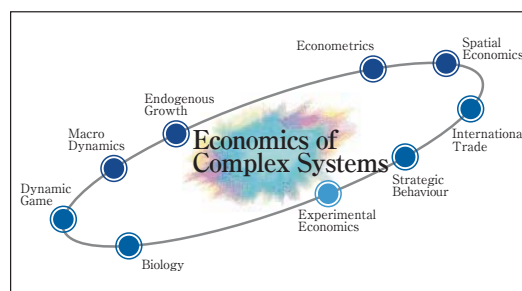


Research Center for Economics of Complex Systems

The application of the science of complex systems to economics advanced greatly in the 1990s. Within this discipline, KIER has achieved great success in the fields of nonlinear economic dynamics and spatial economics. Between 1997 and 2003, we received Grants-in-Aid for Scientific Research toward the formation of a center for the economics of complex systems. During this period, we held multiple interdisciplinary and international conferences, and through joint research with many overseas scholars, we achieved significant results as an international center in this field. The purpose of the establishment of this center is to ensure a permanent research base for the economics of complex systems.

The Research Center for Economics of Complex Systems focuses on the study of “economics of complex systems” as a central research theme, together with “spatial economics” and “economic dynamics”. The objective of the “economics of complex systems” is to elucidate, in a unified way, strategic interdependent relationships, spatiotemporal pattern formations, and macroeconomic fluctuation phenomena. In order to explain cyclical economic phenomena involving many agents, research on interdependence and self-organization is conducted to reconsider the hypotheses of the behavioral patterns of economic agents applied in traditional economics. For example, results that deal with the relationship between multi-sector economies and multiple equilibria and with high-dimensional chaos can be expected. “Spatial economics” studies the mechanisms of economic agglomerations such as industrial clustering, city formation, and transport network formation, whose spatial patterns often provide typical examples of self-organization leading to the emergence of order.

“Economic dynamics” develops formal methodologies used in nonlinear dynamic analysis based on the standard spatiotemporal framework, and constructs a mathematical foundation common to all the research areas of this center.



Research Center for Advanced Policy Studies

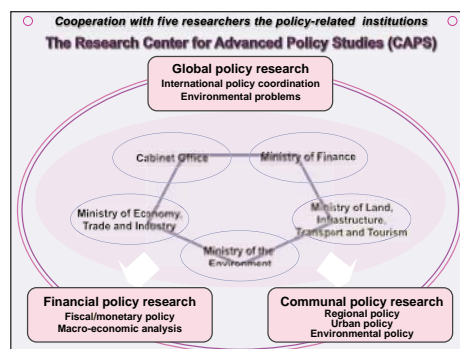
The Research Center for Advanced Policy Studies (CAPS) was established in July 2005 as part of KIER to promote the joint research activities by fixed-term researchers appointed from central government offices, who mainly conduct practical policy research, and tenured KIER researchers, who mainly conduct theoretical research. This center handles three research areas: financial policies (fiscal and monetary policies), global policies (interdependence of international policies), and communal policies (environmental, medical, and urban issues). These three policy research areas are closely related, and their combined objective is the multifaceted analysis of policies based on the needs of the times.

CAPS comprises five professors with fixed term appointment, hereinafter referred to as non-tenured professors, and one tenured professor (the center director; KIER position held concurrently) responsible for the operation of the center. Non-tenured professors are dispatched from government departments (Cabinet Office, Ministry of Finance, Ministry of Economy, Trade and Industry, Ministry of the Environment and Ministry of Land, Infrastructure, Transport and Tourism).

By investigating the efficacy of the techniques and theory pertaining to advanced economic analysis, which is KIER's main research area, and quickly and precisely linking the results of advanced economic research to policy analysis, the center reflects the fruits of its research in actual economic policies. Its objective is to promote interaction that overcomes the barriers between governmental, private and academic institutions, as well as between government departments, to realize a reciprocal flow of human resources between the policy-related institutions and the academic world, and to foster both theoretical and empirical policy research.

The center was established based on an awareness of the fact that the cultivation of policy makers with superior skills of bargaining and persuasion, supported by specialized knowledge, and the formation of policies that can attain a high level of approval from the international community is important for the Japanese government. In order to achieve the improvement in Japanese policy analysis required for this, it is essential that the practice of compartmentalized policy formulation and analysis is abolished and that two-way flow of human resources and ideas is promoted between the policy-related institutions and the academic world. The center thus plays an important role in continually providing a place for such interaction and supporting free and vigorous exchange.

Also, reflecting the fruits of the research performed by KIER, which centers on theoretical study, in Japan's economic policies represents an important opportunity to demonstrate the efficacy of theoretical economic research. At the same time, effectively identifying the practical needs of actual policies is indispensable if theoretical economic research is to maintain a sense of reality. Joint research conducted with staff at the center will allow full-time KIER researchers to understand accurately latest policy-related research needs, and to conduct theoretical and empirical research that meets these needs.



Contemporary Economic Analysis Division (Visiting Research Division)

This division was established to accept outstanding researchers from outside the university as visiting professors, and thereby attain powerful support for research. Its studies center on the theoretical and empirical research of the current problems of the Japanese economy. The topics of these studies change every year.

Joint Usage / Research Center “International Joint Research Center of Advanced Economic Theory”

Joint Usage / Research Center “International Joint Research Center of Advanced Economic Theory”

KIER has worked extensively to further joint research with researchers both in and outside Japan, as an international hub for researching advanced economic theory. In view of its activity in this area, KIER received MEXT approval in FY2010 as a Joint Usage/Research Center, under the name International Joint Research Center of Advanced Economic Theory, based on the medium-term objective of furthering research in two fields of advanced economic theory: economics of complex systems and economic strategy and organization. In FY2016, KIER was again accredited as the Joint Usage/Research Center by MEXT.

The Center uses the abundant human resources and facilities at KIER and the international research networks that have been cultivated to date as research resources to further international joint research into advanced economic theory, and is working to train researchers involved in economic theory research internationally. The Center is managed by the Joint Research/Usage Center’s Advisory Committee, comprising ten members—five members from within KIER and five external members representing the research community.

Open project research is positioned at the heart of the Center’s operations. This work uses KIER’s research resources regarding themes identified as important in economics, organizing research groups represented by researchers outside KIER to publicly solicit and implement intensive joint research over the course of one year. Many unique research results can be expected to arise through the implementation of these projects.

In consideration of the scope of the specialist research, investigation of these open projects is implemented by the Research Project Selection Committee, comprising five members from within KIER and five external members, and the Advisory Committee decides whether to take up the project based on the results of this investigation. For FY2016, the following 14 projects—general research projects included—were adopted, taking “economic analysis of globalization” as the core theme of the research (i.e., the main research theme).

Titles of the FY2016 Project Research Themes	
Main Research Themes	Researcher Names and Affiliations
“The structure of random strategy proof mechanisms”	Shurojit CHATTERJI, School of Economics, Singapore Management University
“Evolution of Ambiguity Preferences”	Jörgen WEIBULL, Department of Economics, Stockholm School of Economics
“Economic Analyses of Globalization and Uncertainty”	Takao ASANO, Graduate School of Humanities and Social Sciences, Okayama University
General Research Themes	Researcher Names and Affiliations
“Multimarket contact under imperfect observability”	Atsushi IWASAKI, Graduate School of Information Systems, University of Electro-Communications
“Analysis of capital markets under model uncertainty”	Masaaki FUKASAWA, Graduate School of Engineering Science, Osaka University
“Decision theoretic analysis under subjective uncertainty”	Youichiro HIGASHI, Faculty of Economics, Okayama University
“Application of Advanced Meta-Analysis to the Transition Literature”	Akira UEGAKI, Faculty of Economics, Seinan Gakuin University
“International Comparison on Market Quality and Government Quality of Transition Countries”	Hiroaki HAYASHI, College of Economics /Department of International Economics, Ritsumeikan University
“Empirical and Theoretical Studies of Effects of Recent Fiscal Reforms on Future Fiscal Stance and Macroeconomy in Japan”	Real ARAI, School of Economics and Management, Kochi University of Technology
“Statistical analysis of the relation between financial environment and firm behavior - empirical research with linked panel data”	Yasuo GOTO, The Research Institute of Economy, Trade and Industry
“Empirical Analysis of Labor Market Flows”	Masako KIMURA, Graduate School of Economics, Nagoya City University
“Moment inequality based microeconomic theory and its applications”	Andreas SANTOS, University of California San Diego
“O-D data analysis in spatio-temporal econometrics”	Yoko KONISHI, Research Institute of Economy, Trade and Industry
“Macroeconomic analysis with directed search models”	Shouyong SHI, Faculty of Economics, Pennsylvania State University

Further, the Center is internationally minded in its sharing of information on advanced economic theory, actively hosting international conferences and symposiums on advanced economic theory research in concert with the project research. The Center’s activities and information sharing is supported by the Joint Usage/Research Center’s Support Office.

International Research Unit of Integrated Complex System Science (IRU-ICSS)

International Research Unit of Integrated Complex System Science (IRU-ICSS)

Kyoto University is proud of its abundant human resources as well as outstanding research results in the wide-ranging research fields from micro elements to macro human social economic phenomena. In order to draw out human resources that can develop further research and solve the increasingly complex and diverse problems of the future, the “International Research Unit of Integrated Complex System Science” (“The Unit”), which unifies across divisions by planning international alliances based on the common research theme of “complex systems”, was established on 1 April 2010, and its offices are located in the Kyoto Institute of Economic Research (KIER).

● Social Science Unit for Research and Education

Japan has been facing deflationary pressures and stagnant economic growth for the last 20 years. To overcome these difficulties, we need to enhance the market quality and connect science and technology to affluence. In this light, it is imperative to cultivate socio-scientific talents capable of managing ever-increasing data and creating a new education and research system designed for developing seeds based on needs.

This project intends to help promote an evidence-based society in collaboration with medical schools and other natural science departments as well as humanities and social science graduate schools and research institutions in our university. It aims to establish new humanities and social sciences based on quantitative data, cultivate talents in most advanced areas of study, and create evidence-based interdisciplinary human sciences that elucidate human nature and society.

Placing the policy studies by the Research Center for Advanced Policy Studies (CAPS) instructors at its core, we collaborate with departments that comprise the unit and with data-building hubs on and off campus in creating panel data and big data that capture personal traits and social structures in fields ranging from social science to life science. Utilizing the data, our project pursues research on determinants of social phenomena, human activities, and health from innovative perspectives not found in existing research.

In academic year 2016, we will recruit graduate students who are interested in evidence-based human science from the departments that comprise the unit. These students will deepen understanding of evidence-based human science and become ambassadors of evidence-based human science in their respective research fields. They will also engage in research and education with CAPS instructors as student partners, e.g. as research and teaching assistants.

International Research Unit of Advanced Future Studies (IRU-AFS)

● International Research Unit of Advanced Future Studies (IRU-AFS)

The International Research Unit of Advanced Future Studies (Director Misao Sasaki, a professor at Yukawa Institute of Theoretical Physics) was established on July 28, 2015 in collaboration with 12 Kyoto University research organizations based on the New Integrated Creative Sciences Project (NICS Project) research activities (FY 2013-2014), and is operated by the Yukawa Institute for Theoretical Physics (YITP).

Its vision is to drive intellectual adventures of multi-disciplinary integration for paradigm shifts in exploration of universal laws and emerging principles governing living organisms, materials, minds, human societies, education and economies. It also aims to guide our future through intellectual adventures of multi-disciplinary integration. IRU-AFS leverages its international research networks to attract numerous global guest faculty members to promote its original research in collaboration with the International Research Unit of Integrated Complex System Science (IRU-ICSS) and the Unit of Synergetic Studies for Space (USSS).

Research Unit for Development of Global Sustainability

● Research Unit for Development of Global Sustainability

In Jun 2015, Research Unit for Development of Global Sustainability succeeds and replaces the Institute of Sustainability Science (ISS), which has been conducting interdisciplinary research on sustainability since its establishment in 2006.

The Unit designs sustainability-building strategies based on the results of interdisciplinary cooperation between scientists who conduct cutting-edge research in fields related to the natural environment, human society, and life. As well as issues that matter to the participating seven Research Institutes. These scientists clarify, each in their field, which factors determine the life span of the matter they deal with, and present their results on life span from the viewpoint of relative evaluation (assessment of the vulnerability of the natural environment and of matter on the human time scale). The Unit's approach clearly differs from earlier approaches that aimed at steady development in restricted areas: our strategies are dynamic and global, and pay attention to the fact that the human species may not exist forever.

At KIER, we have participated in the Unit from the standpoints of economics and policy research, following participation in ISS.

ICAM Kyoto Branch

● ICAM Kyoto Branch

ICAM is a research center for complex systems founded in July 2002 by Professor David Pines of the Santa Fe Institute as part of the University of California. In July 2005, together with Division of Physics I of the Graduate School of Science, KIER established a Kyoto branch of ICAM, and started to participate in its activities. Project Professor Kazuo Nishimura of KIER and Professor Makoto Yao of the Graduate School of Science serve as representatives of the ICAM Kyoto Branch.



Social Contribution

◆ Symposiums and Seminars

Lectures and symposiums for adults and students are held periodically, and themes centering on the introduction of economic frontiers and explanations of economic problems that are of great social concern are raised. The economic research symposiums that are hosted every year have recently raised such themes as the “Information Society and Economics”, “Management of the Creation of Evolving Values”, and “Simplified Advanced Policy Analysis”.

Further, economic education activities are also pursued via the economic teaching symposium “Specially-Founded Academy for Referencing Advanced Finance and Economics”, and invitations to junior high and high school students to attend public lectures as the audience.

Number of Previous Workshops and Symposiums

Fiscal Year	2011	2012	2013	2014	2015
Total Number	12(6)	20(8)	19(13)	19(9)	16(9)

Note: Figures in parentheses show the number of international symposiums within the total number.

Number of Previous Workshops

FY	2011	2012	2013	2014	2015
Microeconomics and Game Theory Workshop	31	32	28	34	37
Econometrics Workshop	13	16	12	6	11
KIER Workshop	5	2	2	2	3
GCOE Workshop	3	4	—	—	—
Contract Theory Workshop	3	2	2	2	1
Urban Economics Workshop	10	7	11	10	11
CAPS Workshop	2	2	5	7	13
Macroeconomics and Economic Systems Workshop	13	13	14	19	19
Joint Usage / Research Center Workshop	4	3	6	11	10
Specially Promoted Research Workshop	—	13	6	14	17
Others	4	4	0	4	5
Total Number	88	98	86	109	127

Main Symposiums Hosted or Jointly Hosted by KIER (25 September 2010 to 9 March 2016)

Date	Title	Guest Speakers	Venue
2010/9/25~2010/9/26	International Symposium on Global Shock Wave "Global Shock Wave: Rethinking Asia's Future in Light of the Worldwide Financial Crisis and Depression 2008-2010"	Evgeny Gavrilin (Troika Dialogue, Russia) Ryuhei Wakasugi (Kyoto University) Eric Fisher (California Polytechnic State University, USA) Kazumi Asako (Hitotsubashi University) Masumi Hakogi (Hiroshima University) Yoji Koyama (Niigata University) Takuji Kinkyo (Kobe university) Yun Chen (Fudan University, China) Ken Morita (Hiroshima Shudo University) Anna Lukyanova (Health and Safety Executive, UK and Kyoto University) Kai Kajitani (Kobe University) Jonathan Leightner (Augusta State University, USA) Torbjorn Becker (SITE / Stockholm Institute of Transition Economics, Sweden) Takumi Horibayashi (Kanazawa University)	Institute of Economic Research, Kyoto University
2010/10/11~2010/10/14	International and Interdisciplinary Workshop on Novel Phenomena in Integrated Complex Sciences: from Non-living to Living Systems	Herwig Michior (Vienna University of Technology, Austria) Nicholas Curro (University of California, Davis, USA) Takamasa Momose (The University of British Columbia, Canada) Minghu Fang (Zhejiang University, China) Raivo Stern (NICPB / National Institute of Chemical Physics and Biophysics, Estonia) Takashi Imai (McMaster University, Canada) Masashi Takigawa (The University of Tokyo) Peter Lemmens (Institute for condensed Matter Physics, Germany)	Co-op inn Kyoto

Date	Title	Guest Speakers	Venue
2011/2/4~2011/2/5	General Equilibrium, Trade and Complex Dynamics in Memory of Professor Lionel McKenzie	Robert A. Becker (Indiana University, USA) Youngsub Chun (Seoul National University, Korea) Sugata Marjit (Centre for Studies in Social Sciences, India) Makoto Yano (Kyoto University) Jean-Jacques Herings (Universiteit Maastricht, Netherlands) John Stachurski (Australian National University, Australia) Ronald Jones (University of Rochester, USA) Ping Wang (Washington University, USA) Kazuo Nishimura (Kyoto University)	The Westin Miyako Kyoto
2011/2/11	International Conference "Kyoto Conference on International Trade and Innovation"	Shuichiro Nishioka (West Virginia University, USA) Hong Ma (Tsinghua University, China) Byron Gangnes (University of Hawaii, USA and Yokohama National University) TaoTao Chen (Tsinghua University, China) Ryo Nakajima (Yokohama National University) Hongbin Li (Tsinghua University, China) Xielin Liu (Chinese Academy of Sciences, China) Angus C. Chu (Shanghai University of Finance and Economics, China) Yuichi Furukawa (Chukyo University)	Hotel Keihan Kyoto
2011/2/11~2011/2/12	International Conference "The Frontier in Russian Business Economics"	Süleyman Korhonen (Erasmus University Rotterdam, Netherlands) Nobuyuki Kadowaki (Shiga University) Ichiro Iwasaki (Hitotsubashi University) Humikazu Sugiura (Teikyo University) Takashi Hosokawa (Ryukoku University) Norio Horie (University of Toyama) Mayu Michigami (Nigata University) Hiroaki Hayashi (The University of Shimane) Satoshi Mizobata (Kyoto University) Masahiro Tokunaga (Kansai University) Kazuho Yokogawa (The Japan Institute of International Affairs)	Kyoto University Clock Tower Centennial Hall
2011/2/28~2011/3/1	KIER-Pacific Economic Review Workshop on Economics and Economic Policies	Fumio Dei (Kobe University) Yunfang Hu (Tohoku University) Yuichi Furukawa (Chukyo University) Tetsuya Hoshino (Kyoto University) Takashi Komatsubara (Kyoto University) Youichiro Higashi (Okayama University) Misuzu Azuma (Chiba Keizai University) Rui Ota (Chiba Keizai University) Colin Davis (Kobe University) Fwu-Ranq Chang (Indiana University, USA)	The Westin Miyako Kyoto
2011/3/11	International Conference "Topics in Labor Economics"	Kazunari Sugiyama (Tokyo Institute of Technology) Amy Hsin (CUNY / City University of New York, USA) Hisashi Okamoto (Konan University) Julen Esteban-Pretel (GRIPS / National Graduate Institute for Policy Studies) Francesc Ortega (UPF / Universitat Pompeu Fabra, Spain and CUNY)	Institute of Economic Research, Kyoto University
2011/3/19~2011/3/20	Trans-Pacific Labor Seminar 2011	Richard Freeman (Harvard University, USA) Takao Kato (Colgate University, USA) Hiroko Okudaira (Okayama University) Katsuya Takii (Osaka University) Hodaka Morita (UNSW / The University of New South Wales, Australia) Shoko Yamane (Osaka University) Ken Ariga (Kyoto University) Akira Kawaguchi (Doshisha University) Daiji Kawaguchi (Hitotsubashi University)	Shiran Kaikan Annex, Kyoto University
2011/11/18~2011/11/20	The Chukyo-Kyoto International Conference on International Trade and Macroeconomic Dynamics	Margit Sugata (Centre for Studies in Social Sciences, India) Kenji Fujiwara (Kwansei Gakuin University) Zhang Yang (Macau University, China) Yuichi Fukuhara (Chukyo University) Fumio Dei (Kobe University) Eric W. Bond (Vanderbilt University, USA) Morihiro Yomogida (Sophia University) Kenji Kondoh (Chukyo University) Kenneth S. Chan (City University of Hong Kong, USA) Hung-Jen Wang (National Taiwan University, Taiwan) Eden S. H. Yu (City University of Hong Kong, USA) Wilfred J. Ethier (University of Pennsylvania, USA) Junji Ueda (Ministry of Finance, Policy Research Institute) Makoto Yano (Kyoto University) Ronald W. Jones (The University of Rochester, USA) Tetsugen Haruyama (Kobe University) Yoshinori Kurokawa (University of Tsukuba) Takashi Komatsubara (Kyoto University)	Nagoya Urban Institute in Nagoya, Japan

Date	Title	Guest Speakers	Venue
2011/11/29~2011/12/1	International Symposium "Recent Development in Statistics, Empirical Finance and Econometrics"	Cathy W.S. Chen (Feng Chia University, Taiwan) Kenta Hamada (Waseda University) Youko Konishi (RIETI / Research Institute of Economy, Trade & Industry, IAA) Marc Henry (University of Montreal, Canada) Ming-Yen Cheng (National Taiwan University, Taiwan) Toshio Honda (Hitotsubashi University) Alex Petkovic (Waseda University) Yoshihide Kakizawa (Hokkaido University) Ryo Okui (Kyoto University) Ryozo Miura (Hitotsubashi University) Tomohiro Ando (Keio University) Naoya Sueishi (Kyoto University) Marc Hallin (Free University of Brussels, Belgium) Hormann Siegfried (Free University of Brussels, Belgium) Katsuto Tanaka (Hitotsubashi University) Ngai-Hang Chan (The Chinese University of Hong Kong, China) Masayuki Hirukawa (Setsunan University) Keiji Nagai (Yokohama National University) Kohtaro Hitomi (Kyoto Institute of Technology) Yoshihiko Nishiyama (Kyoto University) Takeaki Kariya (Meiji University) Didit B. Nugroho (Kwansei Gakuin University) Shuichi Nagata (Kwansei Gakuin University)	Rakuyu-kaikan, Kyoto University
2011/12/9~2011/12/10	International Conference "Recent Development in the Russian Business Economics"	Rustem Nureev (States University - Higher School of Economics, Russia) Boris Kheyfets (Institute of Economics, the Russian Academy of Sciences, Russia) Alexander Karlik (St. Petersburg State University of Economics and Finance, Russia) Byung-Yeon Kim (Seoul National University, Korea) Ichiro Iwasaki (Hitotsubashi University) Fumikazu Sugiura (Teikyo University) Yuko Adachi (Sophia University) Norio Horie (University of Toyama) Mayu Michigami (Niigata University) Olga Bobrova (St. Petersburg State University of Economics and Finance, Russia) Satoshi Mizobata (Kyoto University) Masakazu Imai (Senshu University) Katsumi Fujiwara (Osaka University)	Shiran Kaikan, Kyoto University (9th) Institut of Economic Research, Kyoto University (10th)
2012/1/28	CAPS International Symposium "The International Trend of Tax System"	Masahiko Nakazawa (Kyoto University) Masaaki Suzuki (Kyoto University) Michael Keen (Fiscal Affairs Department, IMF) Thor O. Thoresen (About Statistics Norway) Motohiro Sato (Hitotsubashi University) Hiroaki Hayashi (Kansai University) Kazuhiro Ueta (Kyoto University)	Kyoto University Clock Tower Centennial Hall
2012/1/28~2012/1/29	Workshop on Globalization, Innovation and Firm Productivity in Japan, Korea and the Beyond	Jungsoo Park (Sogang University, Korea) Sanghoon Ahn (KDI / Korea Development Institute, Korea) Jung Hur (Sogang University, Korea) Yasuyuki Todo (the University of Tokyo) Daisuke Miyazawa (Development Bank of Japan) Toshiyuki Matsuura (Keio University) Keun Lee (Seoul National University, Korea) Byung-Yeon Kim (Seoul National University, Korea)	Kyoto University Clock Tower Centennial Hall
2012/3/16~2012/3/17	International Conference on Applied Microeconomics and Development Economics	Rajshri Jayaraman (European School of Management and Technology, Germany) Hitoshi Matsushima (the University of Tokyo) Dilip Mookherjee (Boston University, USA) Debraj Ray (New York University, USA) Koichi Takase (Waseda University) Ryuichi Tanaka (National Graduate Institute for Policy Studies) Masatoshi Tsumagami (Keio University) Kaoru Ueda (Nanzan University)	Research Building #2, Kyoto University
2012/3/17~2012/3/18	Trans-Pacific Labor Seminar 2012	Hank Farber (Princeton University, USA) Takao Kato (Colgate University, USA) Richard Freeman (Harvard University, USA) Daiji Kawaguchi (Hitotsubashi University) Lisa Kahn (Yale University, USA) Hiroshi Ono (Texas A&M University, USA) Kenta Hayashi (Kyoto University) Isamu Yamamoto (Keio University) Peter Kuhn (University of California, Santa Barbara, USA) Masaru Sasaki (Osaka University) Giorgio Brunello (University of Padua, Italy) Lindsay Oldenski (Georgetown University, USA) Hodaka Morita (University of New South Wales, Australia)	Doshisha University, Kyoto
2012/4/5	Workshop on Microeconomics/Game Theory	Julio Davila (CORE-UCLouvain, Belgium, Paris School of Economics, France)	Institute of Economic Research, Kyoto University

Date	Title	Guest Speakers	Venue
2012/5/11	Workshop on Macroeconomics and Economic Systems	Enrico D'Ambrogio (The European Parliament)	Institute of Economic Research, Kyoto University
2012/7/31~2012/8/1	GCOE Program Seminar "Trade and Development"	Kensuke Teshima (Instituto Tecnológico Autónomo de México (ITAM), Mexico)	Institute of Economic Research, Kyoto University
2012/8/23	KIER Workshop	Johannes Horner (Yale University, USA)	Research Building #2, Kyoto University
2012/10/4	Market Quality Workshop	Kenji Sato (Kyoto University) Yuka Ohno (Hokkaido University) Avinash Dixit (Princeton University, USA)	Research Building #2, Kyoto University
2012/10/19	Symposium on Santa Fe Institute in Kyoto "Invitation to Integrated Complex System Science"	Jerry Sabloff (Santa Fe Institute, USA) Fumio Oka (Kyoto University) Hiroshi Watanabe (Kyoto University) tetsuo Kobayashi (Kyoto University) Atsushi Yamauchi (Kyoto University) Terufumi Ohno (Kyoto University) Kazuo Mino (Kyoto University)	Science Seminar House, Kyoto University
2012/11/2	In Celebration of the 50th Anniversary of the Kyoto University Institute of Economic Research (KIER) Conference on Market Quality	Youngsub Chun (Seoul National University, Korea) Takashi Komatsubara (Kyoto University) Tadashi Sekiguchi (Kyoto University) Satoshi Mizobata (Kyoto University) Andrei Yakovlev (National Research University, Russia) Byung-YeonKim (Seoul National University, Korea)	The Westin Miyako Kyoto
2012/11/15~2012/11/16	Kyoto Conference on EMPLOYMENT ADJUSTMENT IN RESPONSE TO SHOCKS: MICRO-LEVEL EVIDENCE & MACRO-ECONOMIC IMPLICATIONS	Richard Upward (the University of Nottingham, UK) Ryo Kambayashi (Hitotsubashi University) Daniela Nordmeier (Nuremberg & Friedrich-Alexander-University, Erlangen-Nuremberg, Germany) Tor Eriksson (Aarhus University, Denmark) Leopoldo Mondauto (Italia Lavoro, Italy) Héloise Petit (CEE and University of Paris I Panthéon-Sorbonne, France) Richard Fabling (Motu Economic & Public Policy Research, New Zealand) Jim Spletzer (U.S. Census Bureau, USA) Robert Petrunia (Lakehead University, Canada)	Kyoto University Clock Tower Centennial Hall
2012/12/12~2012/12/13	Yokohama Conference on Empirical Issues of International Trade and Firms	Lee Branstetter (Carnegie Mellon University / Former Senior Economist of International Trade and Investment, USA) Lu Yi (National University of Singapore, Singapore) Miaojie Yu (Peking University, China) Heiwai Tang (Tufts University, USA) Eiichi Tomiura (Yokohama National University) Tzu-Han Yang (National Taipei University, Taiwan) Andrew Bernard (Dartmouth College, USA) Loretta Fung (National Tsing Hua University, Taiwan) Shuichiro Nishioka (West Virginia University, USA) Hong Ma (Tsinghua University, China) Kozo Kiyota (Yokohama National University) Deng-Shing Huang (Academia Sinica, Taiwan)	The Conference Center, Pacifico Yokohama
2013/1/26~2013/1/27	International Conference "System Transformation and Labour Motivation Problems"	Irina Olympieva (Center for Independent Social Research, Russia) Geoffrey Wood (The University of Warwick, UK) Takumi Horibayashi (Kanazawa University) Igor Gurkov (National Research University - Higher School of Economics, Russia) Vasilii Anikin (National Research University - Higher School of Economics, Russia) Sadayoshi Ohtsu (Kobe University) Hiroaki Hayashi (University of Shimane) Katsumi Fujiwara (Osaka University) Yanxia Tang (Aichi University) Yutaka Konoshi (Gifu University) Satoshi Mizobata (Kyoto University) Fumitaka Iwanami (Komazawa University)	Shiran Kaikan Annex, Kyoto University (26th) Institute of Economic Research, Kyoto University (27th)
2013/2/9	International Workshop on The Economic and Mathematical Analysis of Security Markets	Robert Anderson (University of California, Berkeley, USA) Katsumasa Nishide (Yokohama National University) Rose-Anne Dana (Université Paris-Dauphine, France) Shuji Funahashi (Mizuho Securities Co., Ltd. / Tokyo Metropolitan University) Takashi Kato (Osaka University) Masaaki Fukasawa (Osaka University) Norio Takeoka (Yokohama National University)	Institute of Economic Research, Kyoto University

Date	Title	Guest Speakers	Venue
2013/3/14~2013/3/17	10th Biennial Pacific Rim Conference, Western Economic Association International	Robert F. Engle (New York University, USA) Atsushi Seike (Keio University) George G. Kaufman (Loyola University Chicago, USA) Takatoshi Ito (The University of Tokyo)	Keio University
2013/4/8~2013/4/9	International Conference on Market Quality, Trade and Dynamics	Ronald Jones (University of Rochester, USA) Naoyuki Yoshino (Keio University) Nicholas Yannelis (University of Iowa and University of Manchester, UK) Takashi Kamihigashi (Kobe University) Andy Neumeier (Universidad Torcuato di Tella, Argentine) Yuichi Furukawa (Chukyo University) Krishnendu Dastidar (Jawaharlal Nehru University, India) Hitoshi Matsushima (The University of Tokyo) Takakazu Honryo (University of Mannheim, Germany) Peter Rosendorff (New York University, USA) Mukul Majumdar (Cornell University, USA)	The Westin Miyako Kyoto
2013/4/28	Science Education in Kyoto -The Global Partnership on Science Education Through Engagement in Kyoto-	Yoshiharu Hoshino (Teikyo University) Yasuo Sando (Nippon Steel & Sumikin Research Institute Corporation) Hiroshi Asada (Kyoto Municipal Katsuragawa Elementary School) Yuji Takahata (Nerima Munisipal Kaishin The First Junior High School) Isao Iizawa (Kyoto Municipal Horikawa Senior High School) Toshiharu Tsushima (Fukushima Prefectural Adachi High School) Osamu Marukawa (Kyoto Prefectural Board of Education) Hidefumi Tooyama (Kyoto Prefectural Board of Education) Kazuo Nishimura (Kyoto University)	Panasonic Auditorium, Yukawa Memorial Hall, Kyoto University
2013/11/8~2013/11/9	International Conference on Market Quality and Economic Institutions	Makoto Yano (Kyoto University) Takashi Komatsubara (Kyoto University) Shin Sakaue (Sophia University) Hidetaka Kawano (Aomori Public University) Jinwoo Kim (Seoul National University, Korea) Jun Tomitaka (Aomori Public University) Krishnendu Dastidar (Jawaharlal Nehru University, India)	WA-RASSE (8th) Aomori Public University (9th)
2013/11/9	Joint-Usage, Joint-Research Program Workshop on Social Infrastructure Design in Post-Earthquake	Takayuki Oishi (Aomori Public University) Shino Takayama (The University of Queensland, Australia) Andy McLennan (The University of Queensland, Australia) Youngsub Chun (Seoul National University, Korea) Yoshinori Kon (Aomori Public University)	Aomori Public University
2013/12/3	Institutions, Markets, and Market Quality -IEFS Japan Annual Meeting 2013-	Makoto Yano (Kyoto University) Shuhei Takahashi (Kyoto University) Taiji Furusawa (Hitotsubashi University) Takashi Kamihigashi (Kobe University) Kenji Fujiwara (Kwansei Gakuin University) Hu Yunfang (Tohoku University) Krishnendu Dastidar (Jawaharlal Nehru University, India) Toshihiro Matsumura (The University of Tokyo)	Rokkodai Main Building, Kobe University
2013/12/14~2013/12/15	International Conference "International Comparison on Variety of Capitalism and Work Motivation"	Hironori Tohyama (Shizuoka University) Hitomi Matsubara (Osaka City University) Mihoko Satogami (Kyoto University) Satoshi Mizobata (Kyoto University) Ryoji Ihara (Gifu University) Shoji Hashiguchi (Ritsumeikan University) Katsumi Fujiwara (Osaka University) Hiroaki Hayashi (University of Shimane) Simon Clarke (University of Warwick, UK) Geoffrey Wood (University of Warwick, UK) Pavol Babos (Slovak Academy of Sciences, Slovakia) Ngoc Anh Nguyen (National Economic University, Vietnam) Richard Deeg (Temple University, USA)	Kyoto University Clock Tower Centennial Hall
2014/2/18	SSK International Workshop in Kyoto	Kyungchul Song (University of British Columbia, Canada) Ryo Okui (Kyoto University) Naoya Sueishi (Kyoto University) Sokbae Lee (Seoul National University, Korea) Se-il Mun (Kyoto University)	The Westin Miyako Kyoto

Date	Title	Guest Speakers	Venue
2014/2/27	AEI-Five Joint Workshop on Economic Issues in the Asian Century	Keun Lee (Seoul National University, Korea) Yoshihiko Nishiyama (Kyoto University) Jianguo Xu (Peking University, China) Jae-Young Kim (Seoul National University, Korea) Pei-Ju Liao (Academia Sinica, Taiwan) Tianyang Xi (Peking University, China) Xiaobo Zhang (Peking University, China) Eric Fesselmeyer (National University of Singapore, Singapore) Kamhon Kan (Academia Sinica, Taiwan)	The Westin Miyako Kyoto
2014/2/28	Workshop on Growth and Economic Policies	Kazuo Mino (Kyoto University) Been-Lon Chen (Academia Sinica, Taiwan) Jiin-Jen Chang (Academia Sinica, Taiwan) Miaojie Yu (Peking University, China) Oyvind Thomassen (Seoul National University, Korea) Min Wang (Peking University, China) Tadashi Sekiguchi (Kyoto University) Zhu Shenghao (National University of Singapore, Singapore) Youngsub Chun (Seoul National University, Korea)	The Westin Miyako Kyoto
2014/3/5~2014/3/6	International Seminar "Variety of Capitalism in Transition Countries and Work Motivation"	Kazuho Yokogawa (Kanagwa University) Makoto Kumazawa (Konan University) Jan Hagamejer (Warsaw University, Poland) Joanna Tyrowicz (Warsaw University, Poland) John Round (National Research University-Higher School of Economics, Russia)	Shiran Kaikan Annex, Kyoto University
2014/3/28~2014/3/29	International Conference on Portfolio Selection and Asset Pricing	Giorgia Callegaro (University of Padova, Italy) Darrell Duffie (Stanford University, USA) Masahiko Egami (Kyoto University) Toshiki Honda (Hitotsubashi University) Yuri Kabanov (University of Franche-Comte, France) Shigeo Kusuoka (The University of Tokyo) Hiroshi Morita (Yokohama National University) Rohit Rahi (London School of Economics, UK) Jun Sekine (Osaka University) Jaeyoung Sung (Ajou University, Korea) Xun Yu Zhou (University of Oxford, UK)	Kyoto University Clock Tower Centennale Hall
2014/7/19~2014/7/19	International Conference on "Comparative Analysis of Business and Management"	Yoji Koyama (Niigata University) Norio Horie (University of Toyama) David Stark (Columbia University, USA) Takabumi Hayashi (Kokushikan University) Naoki Wakabayashi (Kyoto University) Fazakas Balazs (Kyoto University) Satoshi Mizobata (Kyoto University)	Kyoto University Clock Tower Centennale Hall
2014/9/24	Second Conference on Institutions, Markets, and Market Quality -IEFS Japan Annual Meeting 2014-	Yan Ma (Kobe University) Takashi Komatsubara (Kyoto University) Nobuyoshi Yamori (Kobe University) Taiji Furusawa (Hitotsubashi University) Naoto Jinji (Kyoto University) Yoichi Sugita (Institute of Developing Economies, Japan External Trade Organization / IDEJETRO) Yoshinori Kurokawa (University of Tsukuba) Akihiko Yanase (Nagoya University)	Rokkodai Main Building, Kobe University
2015/5/21~2015/5/22	Third Conference on Institutions, Markets, and Market Quality -IEFS Japan Annual Meeting 2015-	Makoto Yano (Kyoto University) Shuhei Takahashi (Kyoto University) Mario Crucini (Vanderbilt University, USA) Takayuki Tsuruga (Kyoto University) Akihiko Yanase (Nagoya University) Misuzu Azuma (Chiba Keizai University) Yasushi Kawabata (Nagoya City University) Miki Matsuo (Kyushu International University) Yoichi Sugita (Japan External Trade Organization) Kazuo Mino (Kyoto University) Wanida Ngienthi (Assumption University, Thailand) Yuka Ohno (Hokkaido University) Takashi Komatsubara (Kyoto University) Krishnendu Ghosh Dastidar (Jawaharlal Nehru University, India) Hiroshi Fujii (Chiba Keizai University) Ronald W. Jones (University of Rochester, USA) Masao Oda (Ritsumeikan University) Takumi Naito (Waseda University) Yan Ma (Kobe University) Eden Yu (Chu Hai College of Higher Education, Hong Kong, China) Takeshi Ogawa (Senshu University) Fumio Dei (Kobe University) Yuichi Furukawa (Chukyo University) Rui Ota (Yokohama City University)	Shiran Kaikan Yamauchi Hall, Kyoto University

Date	Title	Guest Speakers	Venue
2015/8/28	J-WEN Mentoring Workshop 2015	Donna Ginther (University of Kansas, USA) Takako Fujiwara-Greve (Keio University) Sayaka Nakamura (Nagoya University) Yuka Ohno (Hokkaido University)	Institute of Economic Research, Kyoto University
2015/11/29	International Symposium "Economic Transition and Income Inequality in China"	Shi Li (Beijing Normal University, China) Kai KAJITANI (Kobe University) Katsuji NAKAGANE (Tokyo University) Xinxin Ma (Hitotsubashi University) Kazufumi YUGAMI (Kobe University) Masashi HOSHINO (Waseda University) Takashi OSHIO (Hitotsubashi University)	Research Building No.2, Kyoto University
2015/12/5	9th Japan-Taiwan-Hong Kong Contract Theory Conference	Hitoshi Sadakane (Kobe University) Stephen Chiu (University of Hong Kong, China) Eric Szu-Wen Chou (National Tsing Hua University, Taiwan) Daisuke Hirata (Hitotsubashi University) Min-Hung Tsay (National Chung Cheng University, Taiwan) Mami Kobayashi (Ritsumeikan University) Hsuan-Chih Lin (Academia Sinica, Taiwan) Kim-sau Chung (Chinese University of Hong Kong, China)	Suzaku Campus, Ritsumeikan University
2016/2/5~2016/2/6	1st International Conference on Evidence-based Policy	Michael Keen (IMF) Makoto Yano (Kyoto University) Nick Buck (University of Essex, UK) Mari Jibu (Japan Science and Technology Agency) Annelies Blom (University of Mannheim, Germany) Ryo Yamada (Kyoto University) Takashi Komatsubara (Kyoto University) Hitoshi Shigeoka (Simon Fraser University, Canada) Masahiro Kuroda (Japan Science and Technology Agency) Takao Kuramochi (Japan Science and Technology Agency) Fumihiko Matsuda (Kyoto University) Fang He (Keio University)	Shiran Kaikan Yamauchi Hall, Kyoto University (5th), Institute of Economic Research, Kyoto University (6th)
2016/2/23~2016/2/24	International Conference "Diversity of Institutional Settings and Path-dependency in Transition Economies"	Gerard Roland (University of California, USA) Geoffrey Wood (University of Essex, UK) Hiroaki Hayashi (University of Shimane) Satoshi Mizobata (Kyoto University) Norio Horie (University of Toyama) Ichiro Iwasaki (Hitotsubashi University) Martina Lubyova (Slovak Academy of Sciences, Slovakia) Pavol Babos (Slovak Academy of Sciences, Slovakia) Hiroshi Tanaka (Ritsumeikan University) Markku Sippola (University of Jyväskylä, Finland) Irina Olimpieva (Center for Independent Social Research, Russia) Yutaka Konishi (Gifu University) Katsumi Fujiwara (Osaka University) Andrei Belov (Fukui Prefectural University) Taku Suzuki (Teikyo University) Sadayoshi Otsu (Kobe University) Victor Gorschkov (Kaichi International University)	Institute of Economic Research, Kyoto University
2016/3/8~2016/3/9	International Conference on Financial Risks and Their Management 2016	Katsumasa Nishide (Yokohama National University) Elisa Alós (Universitat Pompeu Fabra, Spain) Kensuke Ishitani (Meiji University) Christoph Frei (University of Alberta, Canada) Ryuichi Yamamoto (Waseda University) Tim Edwards (S&P Dow Jones Indices) Ciprian V. Marin (Lazard Asset Management) Tomohiro Hirano (The University of Tokyo) Kazuo Yamada (Nagasaki University) Asaf Cohen (University of Michigan, USA)	Research Building No.2, Kyoto University
2016/3/9	International Conference on "EU Economic Stagnation and Political Insecurity: Lessons for Asia"	Steven Rosefelde (University of North Carolina, USA) Olga Bobrova (St.Petersburg State University of Economics, Russia) Victor Gorschkov (Kaichi International University) Yoji Koyama (Niigata University) Christine Tsai (Zhejiang University, China) Bruno Dallago (University of Trento, Italy) Evžen Kočenda (Charles University, Czech Republic)	Institute of Economic Research, Kyoto University

Track Records

◆ KIER Track Records

The Kyoto Institute of Economic Research consistently comes first or second as an economic research institute in Japan. In particular, KIER can cite top-class research results in Japan using both the Social Science Citation Index, which is the most widely used index for evaluating research results, and the number of articles published in international scholastic journals (according to the track record of publishing in the top-ten ranked economic academic journals created by the European Economic Association).

Of all the research conducted at the Institute, "The Spatial Economy" (MIT Press) by specially-appointed professor Masahisa Fujita's, and co-authored with P. Krugman (Princeton University) and A. J. Venables (London School of Economics), can be cited as representative of making a global impact. This book is a must-read for this field, and the number of times it has been cited as of 2010 has reached 1,000.

Honors / Awards

Telecom Social Science Award	1970	Takamitsu Sawa
Nikkei Prize for Economics Books	1970	Takamitsu Sawa
Nikkei Prize for Economics Books	1971	Masahiko Aoki
Medal with Purple Ribbon	1985	Masao Baba
Medal with Purple Ribbon	1987	Hisao Onoe
The Japan Academy Award	1990	Masahiko Aoki
Hiromi Arisawa Prize for the Association of American University Presses	1991	Masahiko Aoki
1st Prize, European Meeting on Cybernetics and Systems Research	1992	Fumiko Seo
Medal with Purple Ribbon	1996	Kazuo Koike
The Energy Forum Award ; Award for Spread enlightenment	1996	Takamitsu Sawa
Wakayama Prefecture Culture Prize	1998	Takamitsu Sawa
The Energy Forum Award	1998	Takamitsu Sawa
The Nakahara Prize, Japanese Economic Association	1999	Akira Okada
Nikkei Prize for Economics Books	2000	Masahisa Fujita
The Annual Award for Research Monographs on Labor	2001	Kenn Ariga
Nikkei Prize for Economics Books	2002	Hiroshi Osano
The William Alonso Memorial Prize for Innovative Work in Regional Science	2002	Masahisa Fujita
The Japan Institute of energy :The award for Distinguished paper	2004	Takamitsu Sawa
The Sakashita Prize, Applied Regional Science Conference	2004	Tomoya Mori
Paper Award of Japan Society for Fuzzy Theory and Intelligent Informatics	2004	Fumiko Seo, Takao Fukuchi
Prize for Publication, Mathematical Society of Japan	2005	Kazuo Nishimura
IJET LionelW. McKenzie Prize for contributions to economic theory	2007	John Stachurski
Excellent presentation award in 6th Annual Meeting (2007) for The Japan Association for Research on Testing	2007	Takuya Kimura
Third Japan Society for the Promotion of Science (JSPS) Prize	2006	Atsushi Kajii
Medal with Purple Ribbon	2007	Takamitsu Sawa
JSIE Kojima Kiyoshi Prize, The Japan Society of International Economics	2007	Ryuhei Wakasugi
Honorary Degree of Doctor, University of Aix- Marseilles II	2007	Kazuo Nishimura
The Nakahara Prize, Japanese Economic Association	2008	Atsushi Kajii
2008 JAIBS Award, Japan Academy of International Business Studies	2008	Ryuhei Wakasugi
Nikkei Prize for Economics Books	2008	Kazuo Nishimura, Makoto Yano
Japan Statistical Society Research Award 2009	2009	Yoshihiko Nishiyama
JSIE-Kojima Kiyoshi Prize, The Japan Society of International Economics	2009	Kazumichi Iwasa
Japan Statistical Society Ogawa Research Prize	2010	Ryo Okui
Kyoto Shimbun Grand Award in Culture/Academy	2010	Kazuo Nishimura
Member of the Japan Academy	2010	Masahisa Fujita
Medal with Purple Ribbon	2012	Kazuo Nishimura
Member of the Japan Academy	2012	Kazuo Nishimura
Tenth Japan Society for the Promotion of Science (JSPS) Prize	2013	Tomoyuki Nakajima
11th Japan Society for the Promotion of Science (JSPS) Prize	2014	Tadashi Sekiguchi

◆ Personnel Training

KIER uses young researchers with degrees from graduate schools both from Japan and abroad as term-limited instructors to supply opportunities to experience research and teaching. From 2003 until now, 14 young researchers have been appointed, and are active as researchers working in educational and research bodies such as universities since the end of their appointment period. Further, young researchers are also used as fixed-term assistant teachers who perform joint research activities with employees.

In addition, various part-time researcher systems are used to accept Kyoto University part-time researchers (research organization researchers), GCOE researchers, and Japan Society for the Promotion of Science (JSPS) special researchers for personnel training.

Moreover, young researchers are actively supported and trained through teaching research to PhD candidates in lectures held with the cooperation of the Graduate School of Economics and Faculty of Economics, Kyoto University.

Number of Young Researchers (PD) Accepted

FY 2011	FY 2012	FY 2013	FY 2014	FY 2015
12	15	17	16	13

Latest Main Appointments among PD and Student Teachers (FY2003~)

■ **Universities** : Hokkaido University, Otaru University of Commerce, Tohoku University, Yamagata University, University of Tsukuba, The University of Tokyo, Hitotsubashi University, Shiga University, Kyoto University, Osaka University, Kobe University, Wakayama University, Hiroshima University, Aomori Public University, Nagoya City University, Kobe City University of Foreign Studies, Shimonoseki City University, Sapporo Gakuin University, Chiba University of Commerce, Nihonbashi Gakkan University, Asia University, Keio University, Seikei University, Chuo University, Tokyo Keizai University, Hosei University, Waseda University, Nagoya Gakuin University, Gifu Shotoku Gakuen University, Doshisha University, Ryukoku University, Osaka Gakuin University, Osaka University of Economics, Kansai University, Kinki University, Kwansei Gakuin University, Konan University, Kyoto Sangyo University, Tezukayama University, Kyoto Seika University, Hiroshima University of Economics, Fukuoka University, Kyushu International University, Ritsumeikan Asia Pacific University, University of Melbourne, Universidad Nacional Autonoma de Mexico

■ **Governmental Organizations** : Technology Research Institute of Osaka Prefecture, RIKEN, Institute of Developing Economies, Policy Research Institute (Ministry of Finance), Ehime Prefecture

■ **Private Firms** : Institute of Intellectual Property, NTT, MRI Research Associates, Inc., AXA Life Insurance, Institute for Areal Studies Software Research Associates, Inc. (SRA), Toyota Motor Corporation, EPS Corporation, Shinsei Bank, Recruit Holdings Co., Ltd., Institute of Transportation Economics, Keizai Doyukai (Japan Association of Corporate Executives), Sumitomo Mitsui Card Co., Ltd., IBM Japan Services Company Ltd., Mitsubishi UFJ Trust and Banking Corporation, Mitsubishi Research Institute, Inc., Chubu Region Institute for Social and Economic Research, Sumitomo Mitsui Banking Corporation

◆ International Exchange

KIER is widely known as an international research center for economic theory. The International Journal of Economic Theory, which is published jointly with Keio University, is highly regarded as a global specialist journal, and is the first international journal of economic theory edited primarily by Japanese researchers. Further, in addition to establishing posts for non-Japanese visiting teachers and inviting world-leading researchers, KIER is also engaged in various joint international research, and is ceaselessly visited by non-Japanese researchers. In light of this track record, KIER has signed agreements with overseas universities in America, France, and elsewhere, and is actively engaging in research exchange.

Academic Exchange Agreements with Foreign Research Institutions

Country	Institution	Period
Russian Federation	Higher School of Economics	2007/4/2~2017/4/1
French Republic	Centre d'Economie de la Sorbonne	2007/7/26~2017/6/30
French Republic	Groupement de Recherche en Economie Quantitative d'Aix Marseille (GREQAM)	2007/11/28~2018/1/29
Republic of Korea	The Institute of Economic Research, Seoul National University	2008/2/22~2018/2/18
United States of America	Department of Economics, University of North Carolina at Chapel Hill	2009/4/22~2019/4/21
Republic of Finland	Helsinki Center of Economic Research	2009/9/8~2019/9/7
Hungary	The Institute of Economics, Hungarian Academy of Sciences	2010/3/23~2017/7/23

Researchers from Abroad

Area	Fiscal Year	FY 2011	FY 2012	FY 2013	FY 2014	FY 2015
Asia		13 (1)	11	35	11 (2)	23 (2)
North America		15	25	22 (2)	18	22 (2)
South & Central America		0	0	2	0	0
Europe		18 (3)	19 (3)	22 (3)	22 (3)	21 (3)
Oceania		1	4	1 (1)	2	2
Middle East		3	1	2	3	1
Africa		0	0	0	0	0
Total		50 (4)	60 (3)	84 (6)	56 (5)	69 (7)

Note: Figures in parentheses describe long-term appointments within the total number.

Library

Ever since its opening in 1965, the Library of the Institute of Economic Research has been actively gathering various data, centering on specialist publications and statistical data relating to economic studies. As of March 2016, the library houses in excess of 80 thousand specialist publications and data in total to support the activities of researchers both from Japan and abroad.

Library Hours

- Mon to Fri 9:00 to 17:00
- Closed on Sat, Sun, holidays, founder's day (18 June), 1 to 5 April, the summer holiday period, the winter holiday period, and the first day of every month
- Use of the Library by Non-Students
When using, please present some form of identification.
Browsing and temporary removal for copying only are permitted.

McKenzie Library (Total collection 1,495 publications)

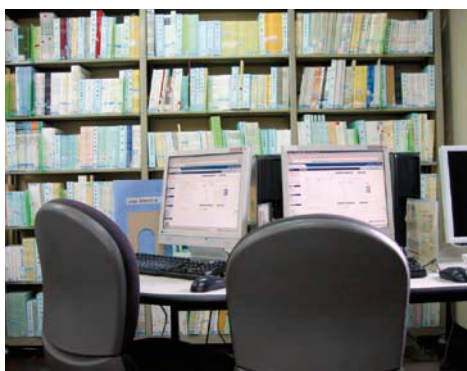
These publications were donated to the Kyoto Institute of Economic Research by Rochester University professor emeritus Lionel McKenzie (1919.1.26-2010.10.12). After graduating from Duke University in the United States, Professor McKenzie studied at Princeton University graduate school, where he obtained both his masters and PhD in economics, and went on to teach at both MIT and Duke University. Following his appointment as professor to Rochester University in 1957 until his retirement, Professor McKenzie actually strove to train researchers over the course of 32 years. Every time he visited Japan, Professor McKenzie held lectures and talks at KIER seminars, as well as visiting and attending international symposiums sponsored by KIER. Consequently, he had close ties to Kyoto University and so he donated his massive library to KIER in October 2003. Professor McKenzie's students are active around the world, and there are many of his students who are teaching at other universities in Japan as well. Still he donated his books to the Kyoto Institute of Economic Research, which is an unparalleled honor for the institute. Making the most of this opportunity, KIER established the McKenzie Library within the institute itself, which continues to be of use in improving the research standards of both faculty and students at Kyoto University.



McKenzie Library



Library



Library



Library

Total number of publications

Classification	Japanese books (volumes)	Western books (volumes)	Total collection (volumes)	Japanese periodicals (types)	Western periodicals (types)	Total No. of periodicals (types)
Total No. of Publications	40,801	41,189	81,990	2,632	1,244	3,876

(as of March 2016)

Finances

Total Budget (National School Special Accounts and University Grants) (Unit / 1,000 Yen)

Fiscal Year		FY 2011	FY 2012	FY 2013	FY 2014	FY 2015
Item						
University Grants		514,389	444,151	429,115	464,702	412,951
Breakdown	Personnel Expenses	396,450	347,616	335,838	379,095	327,696
	Cost of Supplies	117,939	96,535	93,277	85,607	85,255

Grants-in-Aid for Scientific Research Expenses (KAKENHI) (Unit / 1,000 Yen)

Fiscal Year		FY 2011	FY 2012	FY 2013	FY 2014	FY 2015
Item						
Number of Grants		14	13	13	15	17
Amount of Grants		79,900	97,800	118,200	115,874	118,268

Does not include share of expenses or Grant-in-Aid for JSPS Fellows. Direct accounting only.

Targeted Support for Creating World-standard Research and Education Bases (Global COE) (Unit / 1,000 Yen)

Fiscal Year		FY 2011	FY 2012
Item			
Comprehensive Design for Market Infrastructure and Increasing Market Quality (with Keio University)		64,303	66,071
Human Activities and Society Economic Dynamics (with Osaka University)		14,400	15,500
Total		78,703	81,571

Direct accounting only.

External Funds (Unit / 1,000 Yen)

Fiscal Year		FY 2011	FY 2012	FY 2013	FY 2014	FY 2015
Item						
Donations	Number	7	4	2	3	7
	Amount	8,600	2,900	1,176	2,250	4,867
Entrusted Research Funds	Number	6	6	7	10	10
	Amount	39,186	47,481	47,401	46,975	45,303
Total	Number	13	10	9	13	17
	Amount	47,786	50,381	48,577	49,225	50,170

Other Grants-in-Aid, etc. (Unit / 1,000 Yen)

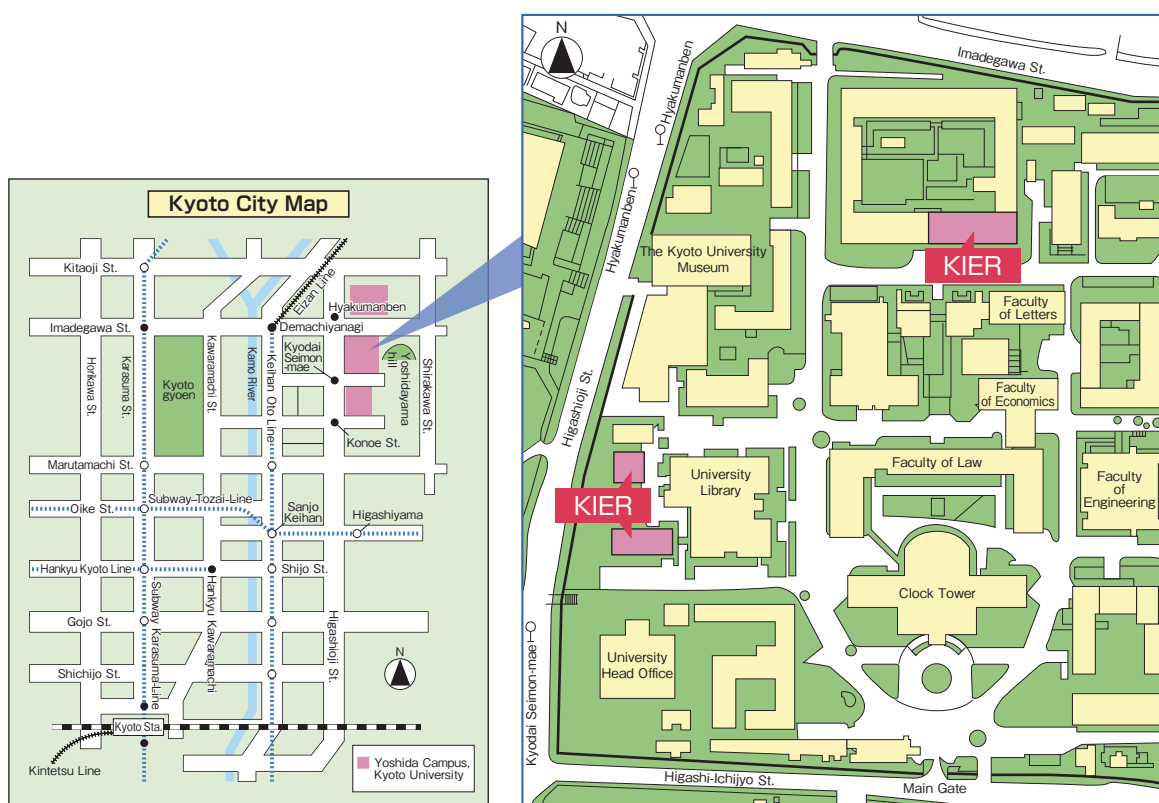
Fiscal Year		FY 2011	FY 2012	FY 2013	FY 2014	FY 2015
Item						
Improvement of Research Environment for Young Researchers (Tenure Track System)		5,860	12,694	26,424	21,962	9,303
Inter-Graduate School Program for Sustainable Development and Survivable Societies		—	1,432	—	—	—
Program for Leading Graduate Schools "Graduate School of Advanced Leadership Studies"		—	2,000	2,000	3,000	500
Building of Consortia for the Development of Human Resources in Science and Technology (K-CONNEX)		—	—	—	—	7,080

Direct accounting only.

Chronological Table

March 1962	▶ The establishment of the Institute of Economic Research in Kyoto University was determined, following the partial revision of The National School Establishment Law in Law No. 36 published in 1962.
April 1962	▶ The Institute of Economic Research was established with two research divisions, Industrial Structure and Comparative Industry.
May 1962	▶ The administrative office was established in the main campus, Kyoto University.
December 1962	▶ A support group for constructing the institute was organized.
August 1963	▶ The institute was moved to a temporary building in Yoshida-Shimo Adachi-cho, Sakyo-ku. (Part of the research rooms remained in the west area of the campus.)
April 1964	▶ Two new research divisions, Local Economy and Resource Economy, were established according to ordinance No. 10 of the Ministry of Education.
July 1964	▶ The construction of a new building was begun by the above-mentioned support group.
May 1965	▶ The construction of the new building was completed and the building was given to the institution by the support group. The institute was moved to the new building.
April 1966	▶ Two new research divisions, Planned Economy and Industrial Statistics, were established according to ordinance No. 24 of the Ministry of Education.
April 1968	▶ The three divisions, Industrial Structure, Resource Economy and Industrial Statistics, were transferred to experimental divisions.
October 1972	▶ A celebration party and memorial lecture meeting were held in the institute on the occasion of the 10th anniversary. A celebration party and memorial lecture meeting were held at Asahi-Shinbun hall in Osaka on the occasion of the 10th anniversary.
April 1976	▶ The Local Economy Division was transferred to an experimental division.
April 1977	▶ The Environmental Economy Division was established according to ordinance No. 15 of the Ministry of Education.
April 1978	▶ The Planned Economy Division was transferred to an experimental division.
April 1979	▶ The Comparative Economy System Division was established according to ordinance No. 12 of the Ministry of Education.
April 1981	▶ The Contemporary Economic Analysis Division (Visiting research division) was established according to ordinance No. 12 of the Ministry of Education. The main research building was extended to a four story building.
November 1982	▶ A memorial lecture meeting was held at the Culture Information Center of Osaka Prefecture on the occasion of the 20th anniversary.
December 1982	▶ A memorial lecture meeting was held in the institute on the occasion of the 20th anniversary.
April 1983	▶ The Comparative Economic Analysis Division (Foreign visiting research division) was established according to ordinance No. 11 of the Ministry of Education.
April 1986	▶ Ordinance No. 19 of the Ministry of Education reorganized the institute into four major research divisions of Quantitative Industrial Analysis, Economic Planning, Resource Environment, and Comparison of Economies, and 12 research areas.
April 1991	▶ A research area was added, amounting to 13 research areas.
October 1992	▶ A memorial lecture meeting was held at the Faculty of Economics on the occasion of the 30th anniversary. A memorial symposium was held at Senri Life Science Center in Toyonaka on the occasion of the 30th anniversary.
March 1993	▶ The Comparative Economic Analysis Division (Foreign visiting research division) was closed.
April 1993	▶ The International Political Economy Division (Foreign visiting research division) was established according to ordinance No. 19 of the Ministry of Education.
June 1994	▶ The National Wealth Division was established according to ordinance No. 24 of the Ministry of Education, amounting to 5 major research divisions and 15 research areas.
April 2000	▶ The Research Center for Financial Engineering was established.
October 2001	▶ Endowed research division "Applied Financial Engineering Division (Sponsored by Nomura Securities Group)" was established for a time period of until September 30, 2004
April 2002	▶ The Economic Planning Division was renamed as the Economics of Complex Systems Division according to the law amending The National School Establishment Law.
October 2002	▶ A memorial symposium and celebration party were held at Kyoto International Community House on the occasion of the 40th anniversary.
November 2002	▶ A memorial symposium and celebration party were held at Gakujutu-Sogo Center (Hitotsubashi Memorial Hall) in Tokyo on the occasion of the 40th anniversary.
February 2004	▶ Professor McKenzie, Professor emeritus of University of Rochester, received the title of Honorary Doctor of Kyoto University. The McKenzie Library was opened with books donated by Professor McKenzie, Professor emeritus of University of Rochester.
April 2004	▶ The institute was reorganized into three major research divisions of the Economic Information Analysis, Economic Institution, Public Policy, and two research centers of Financial Engineering and Economics of Complex Systems. The Tokyo branch of the Institute of Economic Research was opened in Marunouchi, Tokyo. (for a time period of until January 31, 2012.)
October 2004	▶ The time period for the endowed research division "Applied Financial Engineering Division (Sponsored by Nomura Securities Group)" was renewed until September 30, 2007.
July 2005	▶ The Research Center for Advanced Policy Studies was established.
August 2006	▶ Applied Financial Engineering Division (Sponsored by Nomura Securities Group) was renamed as Applied Financial Engineering Division (Sponsored by Nomura Group) .
April 2007	▶ Endowed research division "Educational Economics Division" was established for a time period of until March 31, 2010
October 2007	▶ Endowed research division "Mathematical Finance Division (Nomura Group)" was established for a time period of until September 30, 2010
March 2008	▶ The earthquake reinforcement of the library annex was completed. This became the new north wing of KIER and was handed over.
August 2008	▶ The Tokyo office (at Marunouchi) was opened in the Tokyo branch as a partnership and communications base concomitant with the implementation of the GCOE (Keio University) program. (for a time period of until January 31, 2012.)
September 2008	▶ The Tokyo office (at Mita) was opened in the Tokyo branch as a teaching and research base concomitant with the implementation of the GCOE (Keio University) program.(for a time period of until March 31, 2016)
December 2008	▶ 816m ² of the south wing of the 4th floor of the Graduate School of Engineering building No. 2 was received by the Institute of Economic Research as a space for research and lectures.
April 2009	▶ The Public Policy Research Division changed its name to the Strategic Economic Studies Division.
April 2010	▶ The Research Center for Financial Engineering was reorganized as the Financial Research Division. The Joint Usage/Research Center was certified as an "International Joint Research Center of Advanced Economic Theory". The new "International Research Unit of Integrated Complex System Science (IRU-ICSS)" is being established as a companion unit. (Scheduled for completion on March 31 2022.) Further, the Institute of Sustainability Science is also participating.
April 2011	▶ The Research Center for Advanced Policy Studies was established in Research Divisions.
November 2012	▶ A memorial lecture and celebration were held at Shiran Kaikan on the occasion of the Institute's 50th anniversary. A memorial lecture and celebration were held at the Kyoto University Tokyo Office on the occasion of the Institute's 50th anniversary.
March 2013	▶ The earthquake reinforcement of KIER's main wing was completed.
April 2013	▶ The Administration Office (Letters), Main Campus was established for more efficient and integrated administrative processing.
July 2013	▶ The Administration Office (Letters), Main Campus went into full-scale operation following the completion of the office relocation.
April 2014	▶ The new "Social Science Unit for Research and Education" will be established as a companion unit. (Scheduled for completion on March 31, 2025.)
July 2015	▶ KIER participated in the launch of the International Research Unit of Advanced Future Studies (IUR-AFS) on July 28, 2015.
April 2016	▶ The Institute of Sustainability Science transitioned into the Research Unit for Development for Global Sustainability.

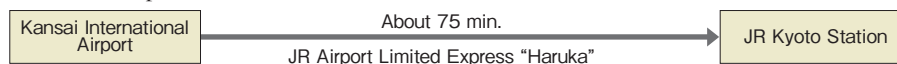
Map & Access



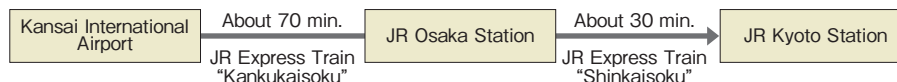
Access to Kyoto Station from Kansai International Airport

1) Train

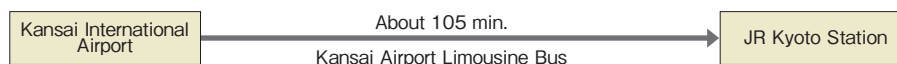
- Airport Limited Express Train "Haruka"



- JR Train



2) Airport Limousine Bus



Transportation to Kyoto University from JR Kyoto Station

- To take a taxi

The journey will take about 20 minutes and cost approx. 2,000 yen.

- To take the bus: Kyoto City Bus

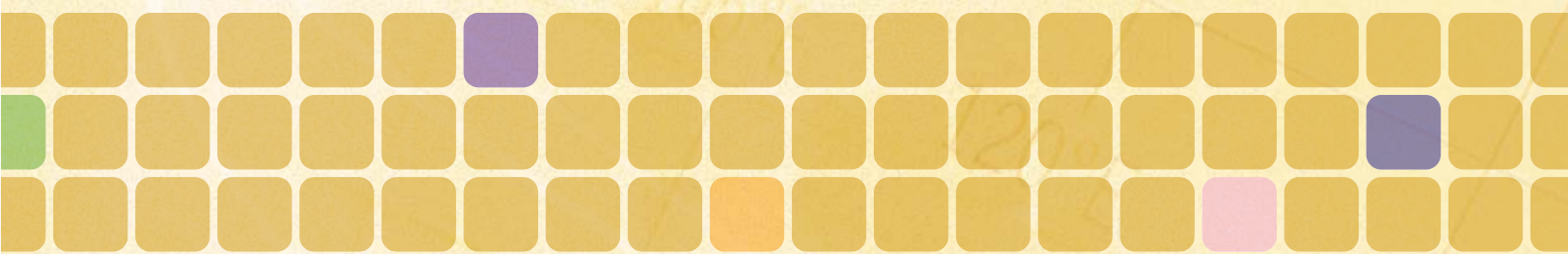
The bus ride will take approx. 30-35 minutes and cost 230 yen.
 # 206: bound for Kitaoji Bus Terminal via Higashiyama St.
 Get off at "Kyodai Seimon-mae".
 # 17: bound for Ginkaku-ji via Kawaramachi St.
 Get off at "Hyakumanben".

◆ Contact information of Kyoto University, Institute of Economic Research

<URL><http://www.kier.kyoto-u.ac.jp>

Yoshida-Honmachi, Sakyo-ku, Kyoto 606-8501 TEL.075-753-7102

2016-2017



*Overview of Institute of
Economic Research
Kyoto University*